

Construction
\$4,589,755
15,137SF
\$303.21/SF



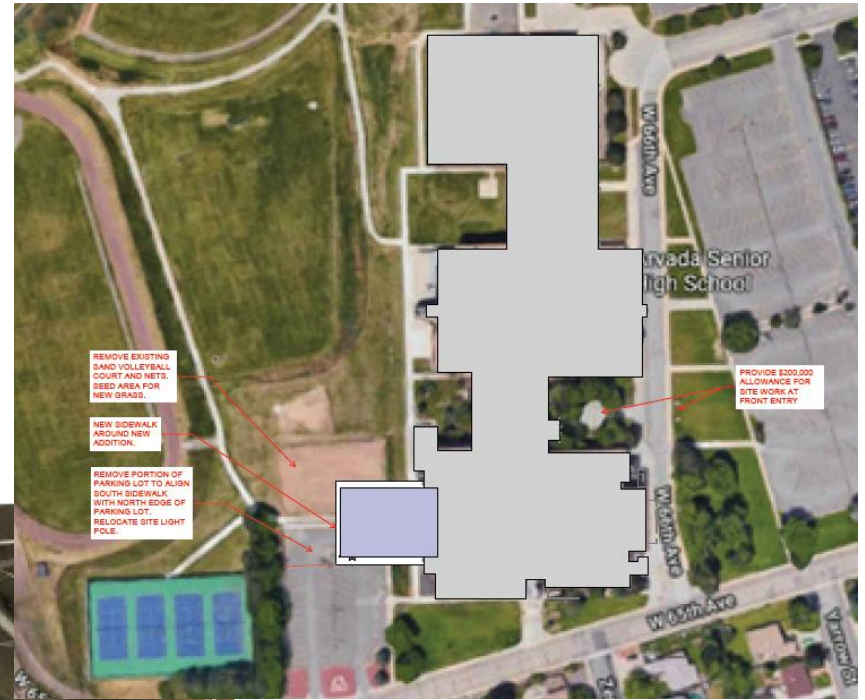
**Three Creeks K8 – Addition –
HCM – Phipps**

Construction
\$6,694,785.
16,890SF
\$396.38/SF



Wilmot ES – Addition
DLR – CMGC Himmelman

Construction
\$12,971,690
49,194SF
\$263.68/SF



Arvada HS – Addition – (3rd Floor Renovation)
HCM – CMGC Saunders

Construction
\$16,736,000
58,537 SF
\$286/SF



SOUTHWEST CORNER



Kendrick Lakes ES – Replacement
Larson Incitti – Roche

Summer 2020 - 20 Efficiency Future Ready

Locationb	Artic		Description	A/E	Contractor
Hackberry Hill	Arvada	ES	Hackberry Hill ES Efficiency & Fut	RTA	
Fremont	Awest	ES	Fremont ES Efficiency & Future	Jordin	
Green Gables	Bear	ES	Green Gables ES Efficiency & Future	SyBazz	
Coronado	chat	ES	H Coronado ES Efficiency & Future Ready	OZ	
Columbine Hills	Columbine	ES	H Columbine Hills ES Efficiency & Future Ready	OZ	
Dutch Creek	Columbine	ES	Dutch Creek Eff Fut	Cunningham Group	
West Jefferson	Con	MS	H West Jefferson MS Efficiency & Future Ready	Cannon	FCI
Ralston	Gold	ES	H Ralston ES Eff & Future Ready	CRP	
Welchester	Gold	ES	Welchester ES Eff & Future Ready - Priority toilet partition - back hallway to the west meta.	CRP	
Foothills	Grn Mtn	ES	Foothills ES Efficiency & Future	CRP	
Hutchinson	Grn Mtn	ES	Hutchinson ES Efficiency & Future	SyBazz	
Belmar	lakewood	ES	Belmar ES Efficiency/Future + Paving	AMD	
Eiber	lakewood	ES	Eiber ES Efficiency & Future	AMD	
Adams	S lake	ES	H02500U01 - H Adams ES Efficiency & Future Ready	RB+B	
Semper	S lake	ES	Semper ES Efficiency & Future Read	RB+B	
Witt	S lake	ES	Witt ES Efficiency & Future Ready	RB+B	
Lukas	Slake	ES	Lukas ES Efficiency & Future Ready	RB+B	
Stober	W Ridge	ES	Stober ES Efficiency & Future Read	LOA	
Vivian	W Ridge	ES	Vivian ES Efficiency & Future Read	CRP	
Trailblazer Stadium			Trailblazer Stadium Efficiency & Future Ready	Mellin & Assoc	

Summer 2020 – 69 locations

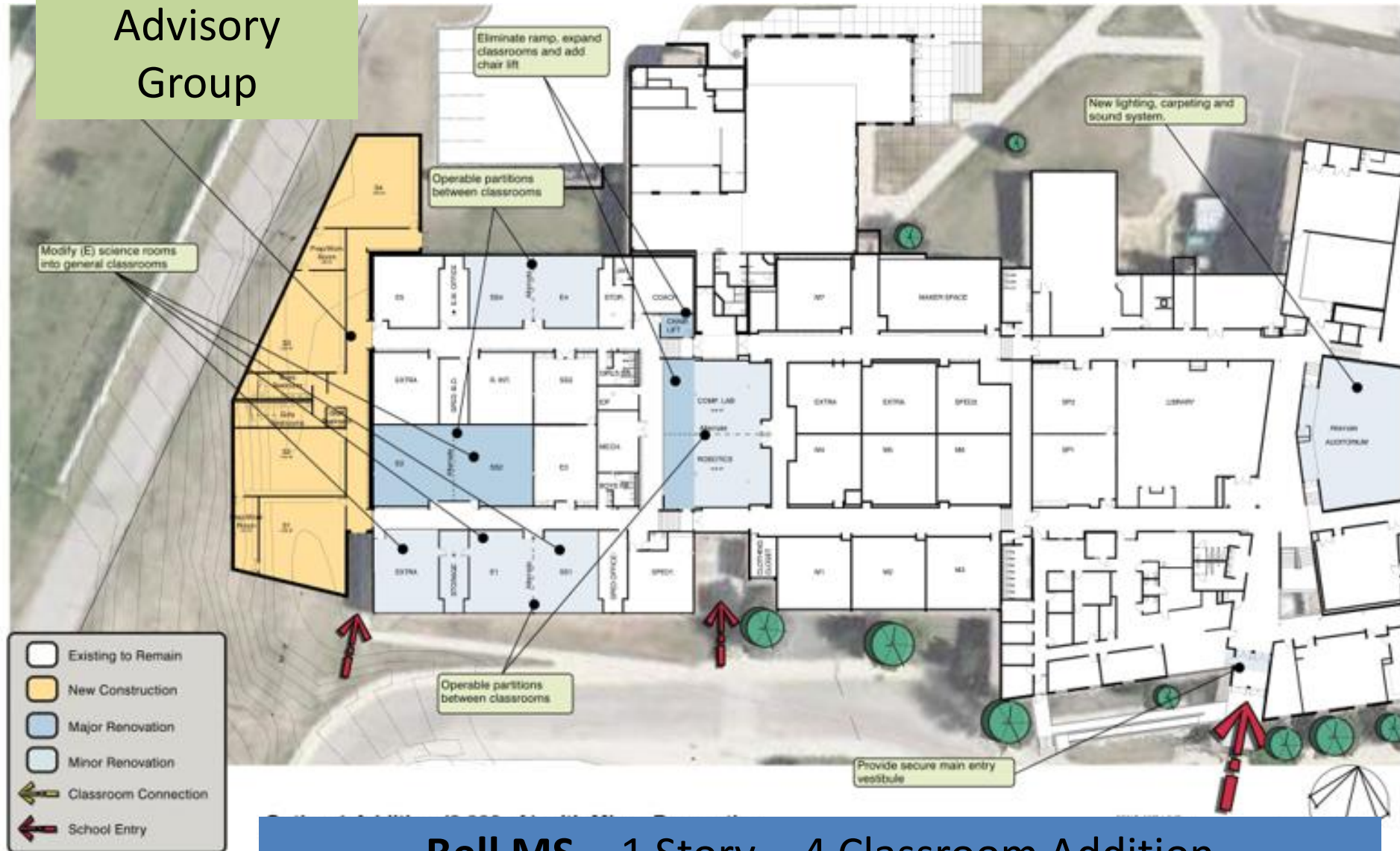
Location		Program	Description	A/E
DW Field Improvements	DW		Pomona T&F, Standley Lake T&F , Golden T, Awest T Green Mountain T&F	HCM
DW Flooring	DW	Bond	Lasley 165,000, Fletcher Miller 160,000 & Fitzmorris, 160,000 Construction costs + 23.8% \$115,430 600430 Free Horizon added funded from	
DW Flooring II	DW		Allendale, Thompson, Fairmount	
DW LED	DW		18 Schools - Deane, Stott, Vanderhoof, Kullerstrand, Maple Grove, Columbine Hills, Westridge, Carmody, Devinny, Sheridan Green, Ryan, Lasley, Patterson, Fletcher Miller, Fitzmorris, Powderhorn, Dennison =134085+128100+210000+101142+105954+367710+120750+274419+127575+114983+128263+179130+225750+124436+121065+126525+122903 Add westgate Peck & Secrest	Ackerman
DW Mech	DW		3 ~ Schools - Stott \$185k Boiler,Ryan \$974k Boiler ahu controls, Patterson \$675k AHU Boiler,	Columbine
DW Paving	DW		3 Schools - Columbine Hills, Everitt MS, Lawrence	Dadey Engineering
DW Paving II	DW		3 schools Ryan ; Mitchell + \$288,750 add Shelton +80,010	JVA
DW Playground	DW	Bond	- Allendale , Stott , Vanderhoof, Sheridan Green , Fletcher Miller, ,Westridge, Kendallvue, Dutch Creek, Stony Creek use \$ from	Design Concept
DW Roofing	DW		Green MT ES, Lasley ES, Patterson ES ,Parr ES CH used for lasley roof	WJE
DW Roofing II	DW	Bond	Kullerstrand \$265266, Carmody \$126521, Swanson \$154659, Little \$50511, Thompson 53390, Evergreen HS \$175222	Roof Tech SR-DK
DW Security Glass II	DW	Bond	11 Schools - Peck, Secrest, Thomson, Slater, Green Mtn ES, Kyffin, Mitchell, Shelton, Warder, Stevens, Wilmore Davis	In House

10 – Additions

1 - New Facility

Location		Program		Description	A/E	Contractor
Arvada K8	K8	Bond	Addition	H Arvada K8 Efficiency & Future Ready	RTA	
Bell	MS	Bond	Addition	Bell MS Addition	EIDOS	
Brady	OPT	Bond	Addition	H Brady Exploration School Efficiency & Future Ready (Elev -shaft exists - pit unknown eco space drive)	Alan Ford	
Conifer	HS		Addition	Conifer HS	Cannon	FCI
CTE South	OPT		New Facility	WOTC - South	HCM	CMGC
Parmalee	ES	Bond	Addition	Parmalee ES Addition	OZ	
Foster	ES	Bond	Addition	H Foster ES Addition & General Upgrades	RTA	
Jefferson HS	HS	Bond	Addition	Jefferson HS	MOA	Haselden
Lumberg	ES	Bond	Addition	H Lumberg Efficiency & Future Ready	MOA	Haselden
Manning	OPT	Bond	Addition	Manning Addition	AMD	
Wayne Carle	MS	Bond	Addition	Wayne Carle MS Addition & General	RB+B	

Design Advisory Group



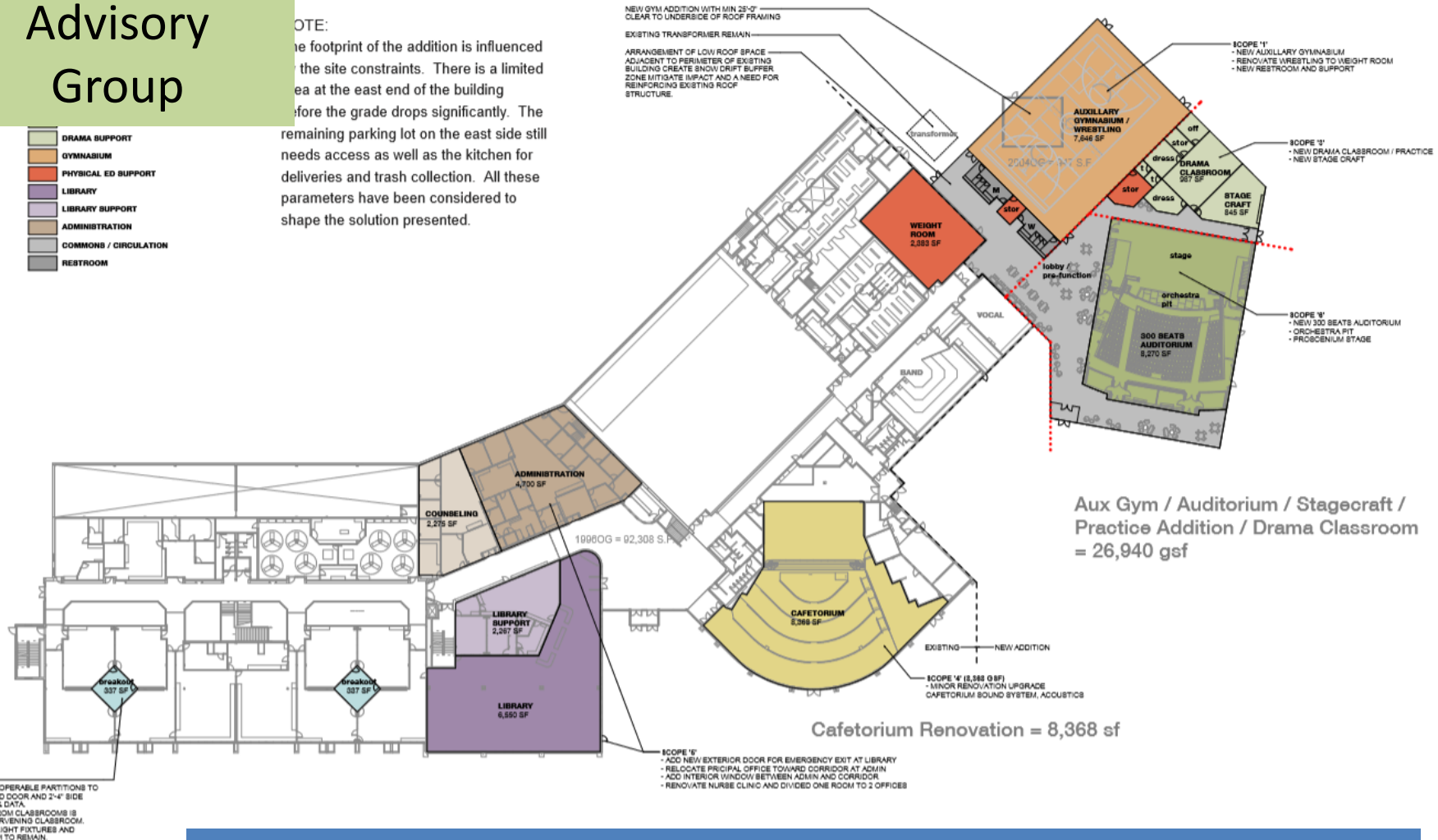
Bell MS – 1 Story - 4 Classroom Addition
Eidos – Contractor TBD

Design Advisory Group

NOTE:

The footprint of the addition is influenced by the site constraints. There is a limited area at the east end of the building before the grade drops significantly. The remaining parking lot on the east side still needs access as well as the kitchen for deliveries and trash collection. All these parameters have been considered to shape the solution presented.

- DRAMA SUPPORT
- GYMNASIUM
- PHYSICAL ED SUPPORT
- LIBRARY
- LIBRARY SUPPORT
- ADMINISTRATION
- COMMONS / CIRCULATION
- RESTROOM



Conifer HS – Aux Gym Addition
with Auditorium Master Plan
Cannon – FCI

Design
Advisory
Group



CTE South – New Building
HCM – Contractor TBD

Design Advisory Group



Jefferson HS – Aux Gym Addition
MOA – Haselden

Design Advisory Group



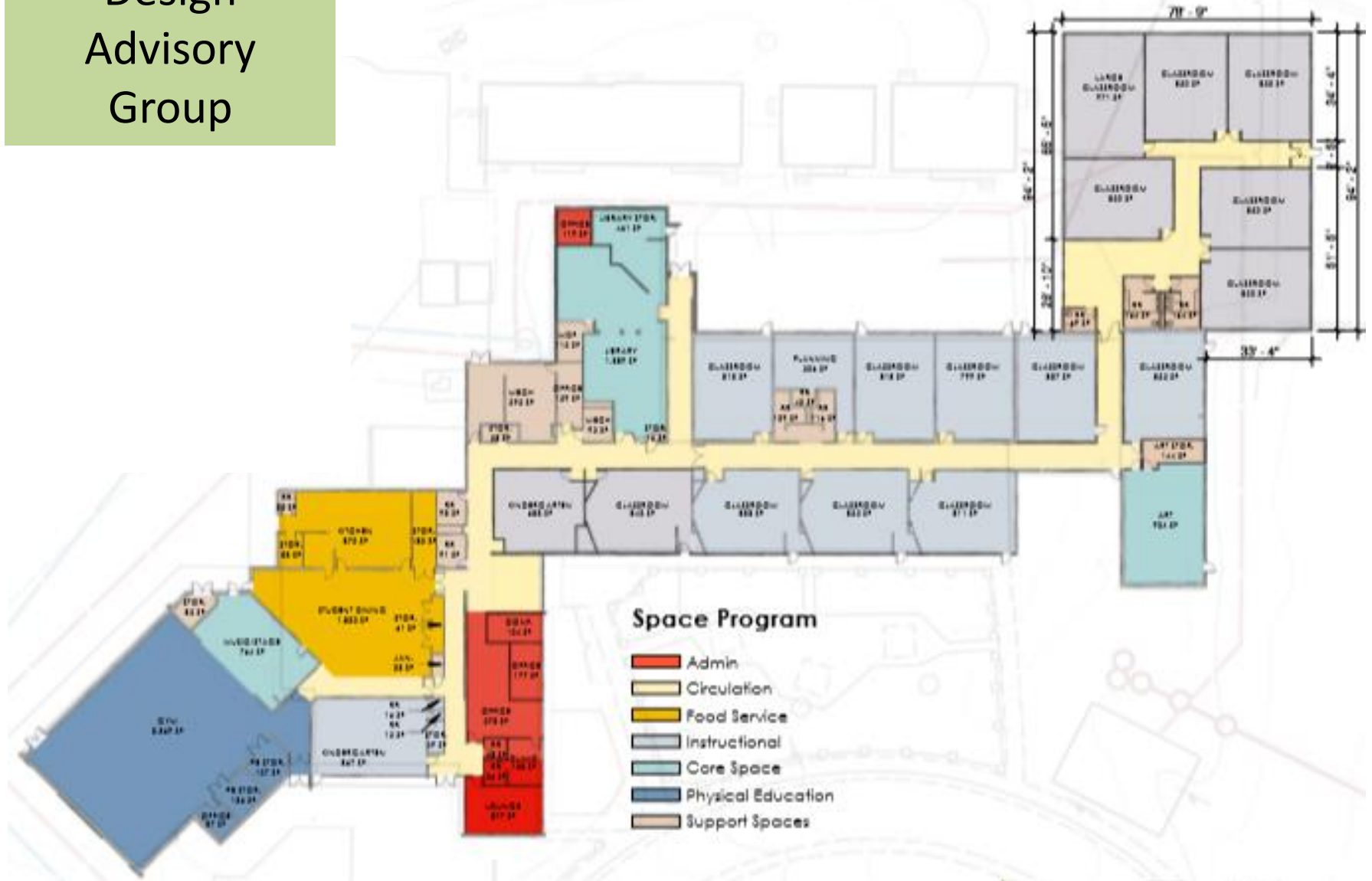
**Lumberg ES – 4 Classroom & Music Addition
MOA – Haselden**

Design
Advisory
Group



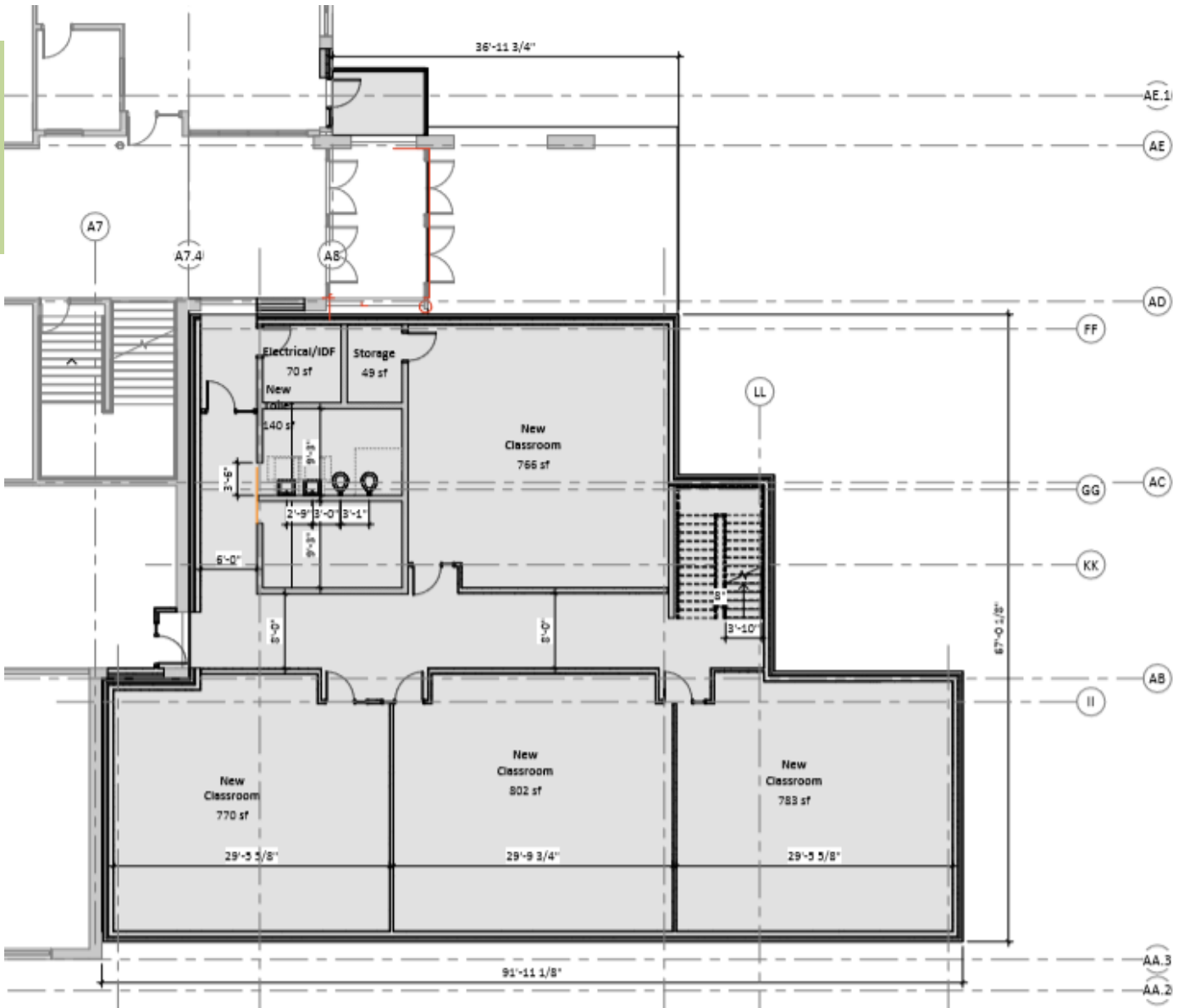
Manning Opt – 1 Story - 7 Classroom Addition
AMD – Contractor TBD

Design Advisory Group



Parmalee ES – 1 Story – 6 Classroom Addition
OZ – Contractor TBD

Design Advisory Group



Wayne Carle – 2 Story – 8 Classroom Addition
AMD – Contractor TBD



Columbine High School

Precedent Images

August 21, 2019



LANDSCAPE EDGE: TRANSPARENT



JEFFERSON COUNTY SCHOOLS • COLUMBINE HIGH SCHOOL

AUGUST 2019



DESIGN
CONCEPTS

Community + Landscape Architects

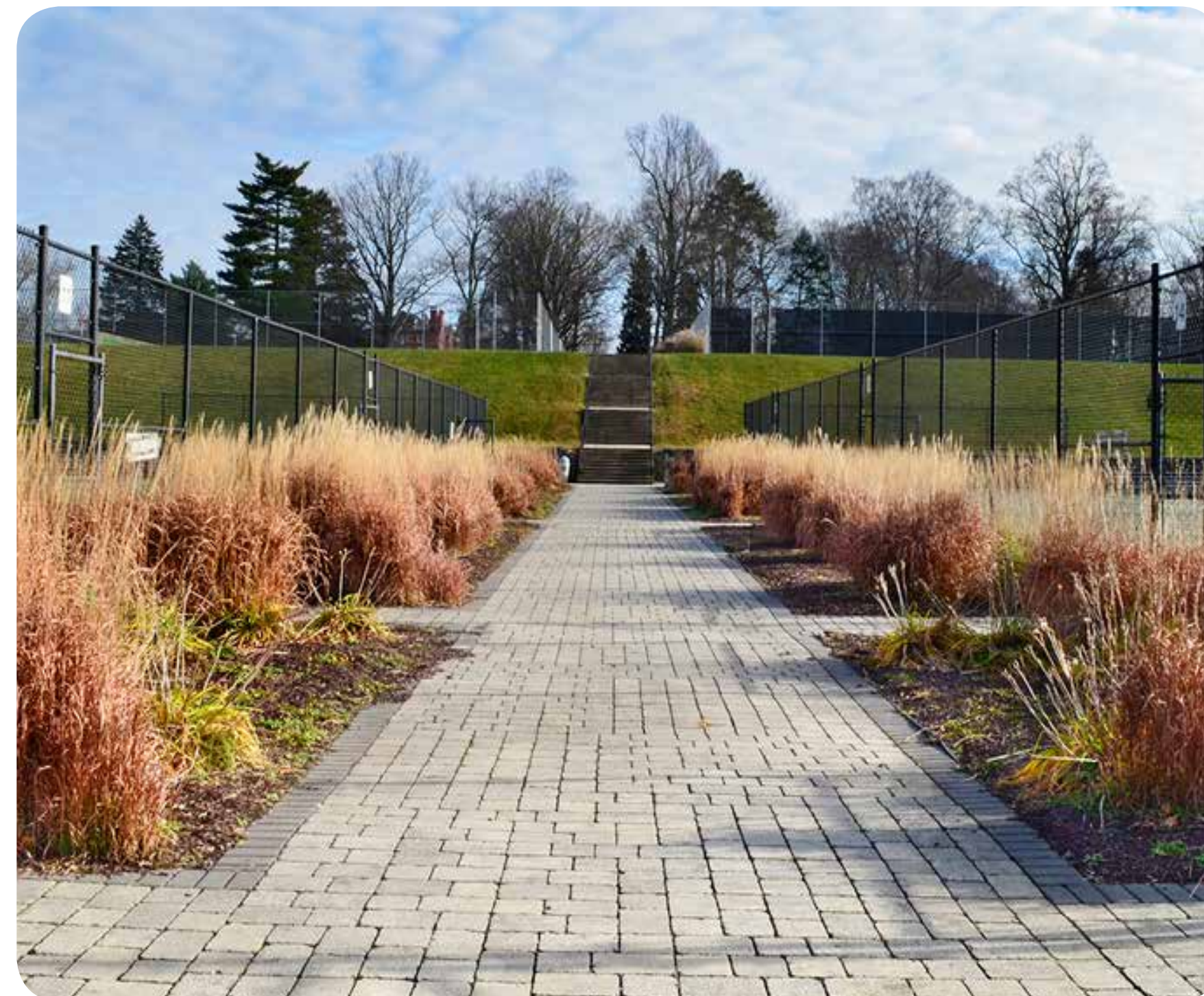
Columbine High School

Precedent Images

August 21, 2019



LANDSCAPE EDGE: SEMI-TRANSPARENT



JEFFERSON COUNTY SCHOOLS • COLUMBINE HIGH SCHOOL

AUGUST 2019



DESIGN
CONCEPTS

Community + Landscape Architects

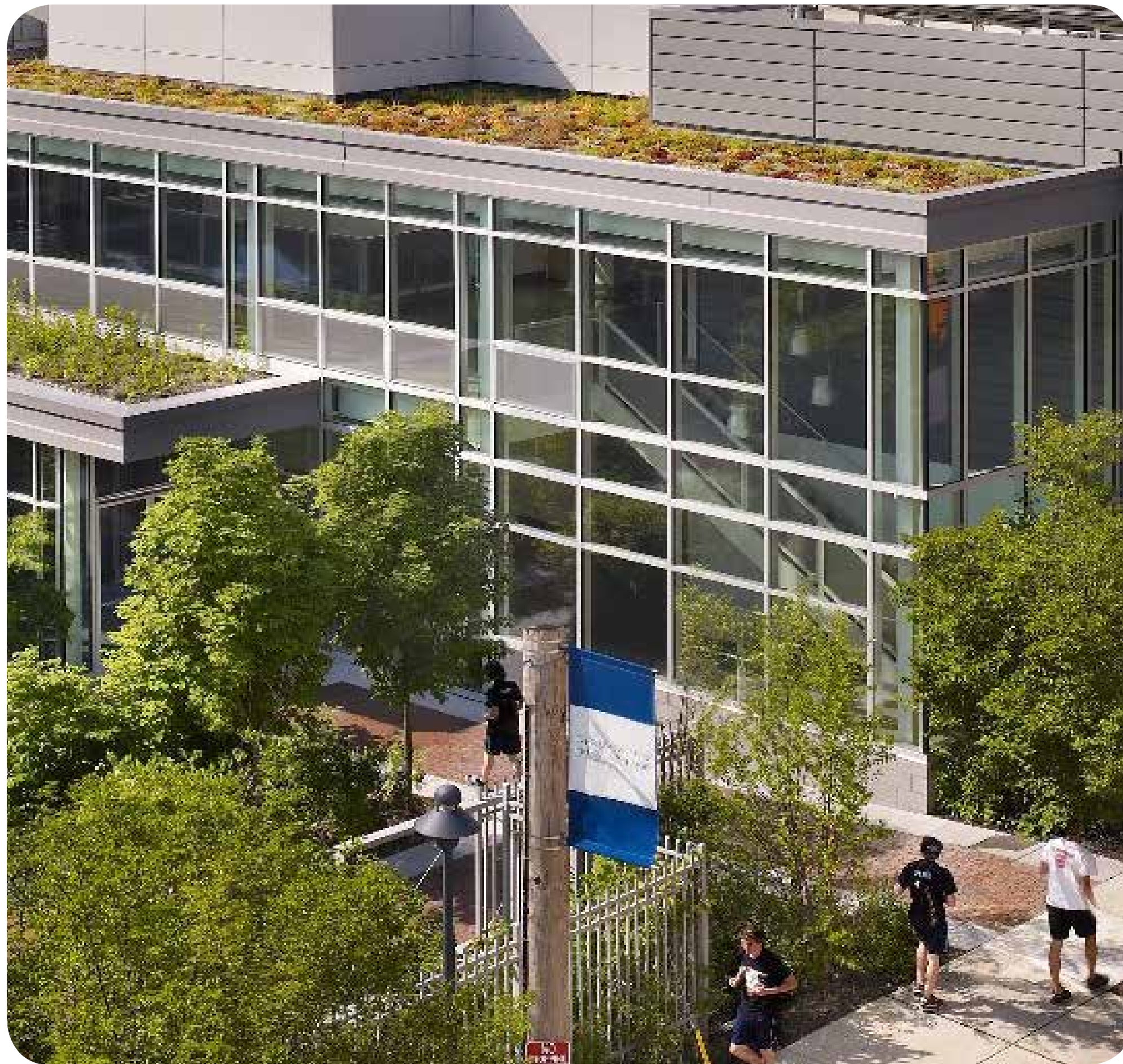
Columbine High School

August 21, 2019



Precedent Images

LANDSCAPE EDGE: OPAQUE



JEFFERSON COUNTY SCHOOLS • COLUMBINE HIGH SCHOOL

AUGUST 2019



DESIGN
CONCEPTS
Community + Landscape Architects

Precedent Images

LANDSCAPE EDGE: FENCE STYLES + GATEWAYS



Black Vinyl Clad Chain Link Fence



Ornamental Fence



Pedestrian Gateway



Wood Estate Fence



Pilaster Gateway



Controlled Access using Pilasters / Fencing

Columbine High School

August 21, 2019

Existing Approach



Existing Approach



Columbine High School

August 21, 2019

Existing Approach



Columbine High School

August 21, 2019

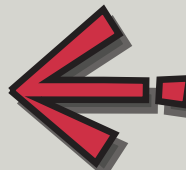
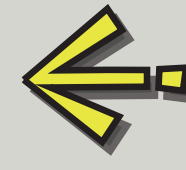



Plan - Option A



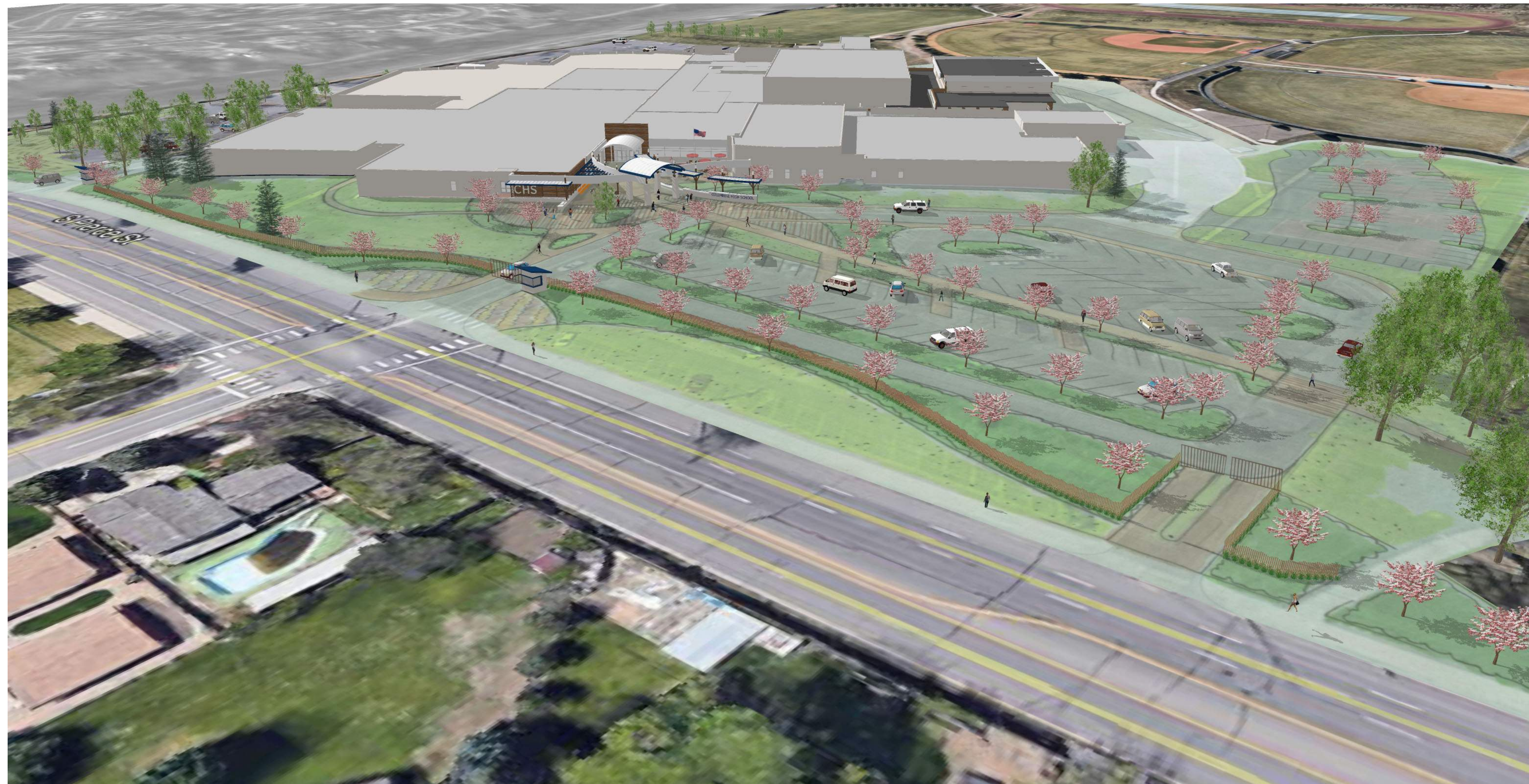
Existing
595 Parking Spaces

Option A
527 Parking Spaces
+68 Potential Spaces
(Tennis Courts)
595 Total

-  Entrances
-  Circulation
-  Access Control Booth

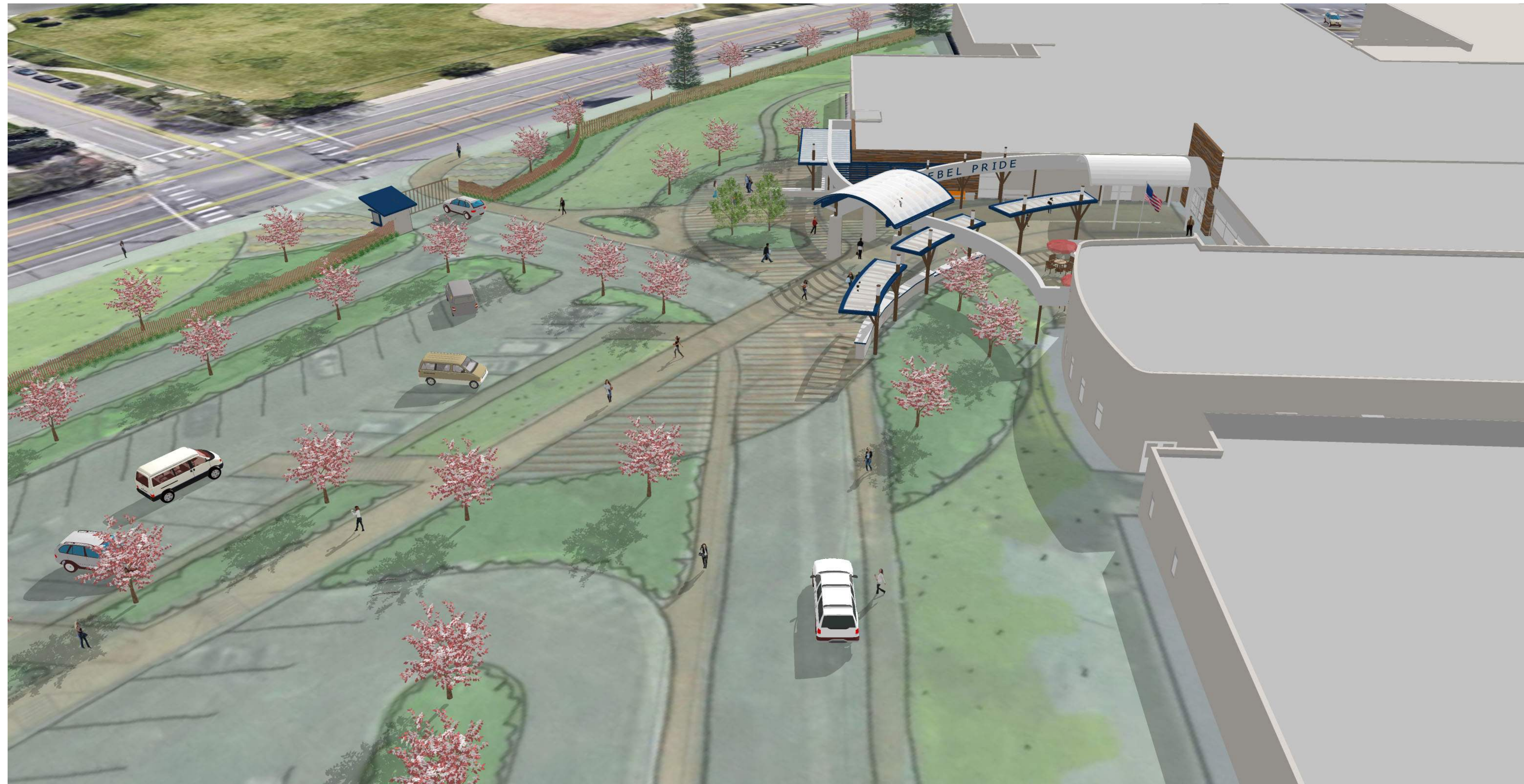
Columbine High School

Option A Perspective



Columbine High School

Option A Perspective



Columbine High School

August 21, 2019



Columbine High School

Option A Perspective



Columbine High School

Option A Perspective







Plan - Option B


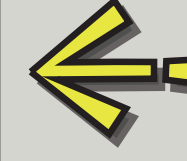



Existing
595 Parking Spaces

Option B
478 Parking Spaces
+68 Potential Spaces
(Tennis Courts)
546 Total

-49 Spaces

 Entrances

 Circulation

 Access Control Booth

Columbine High School

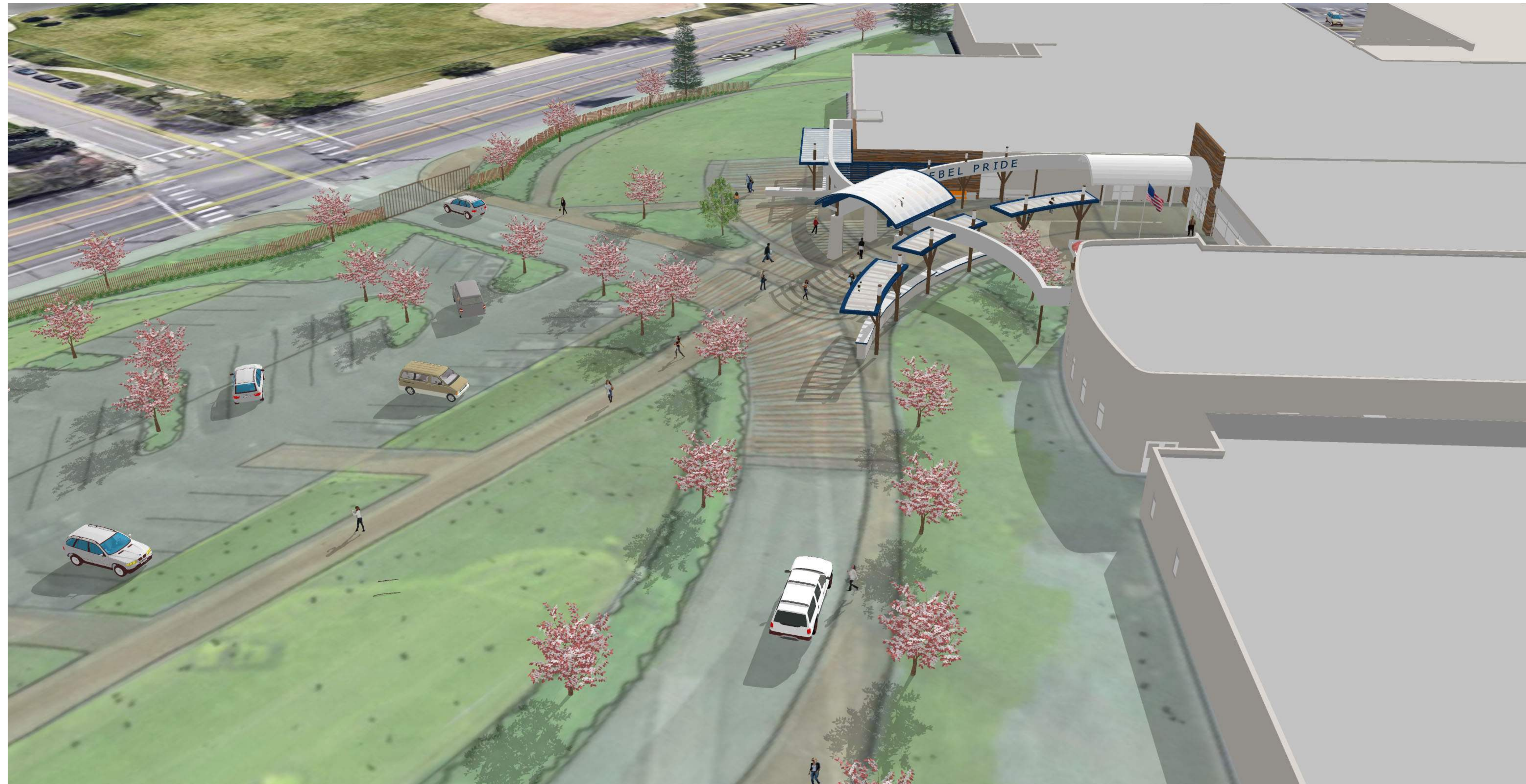
August 21, 2019

Option B Perspective



Columbine High School

August 21, 2019



Columbine High School

August 21, 2019



Option B Perspective



Columbine High School

Option B Perspective



Columbine High School

Option B Perspective



Columbine High School

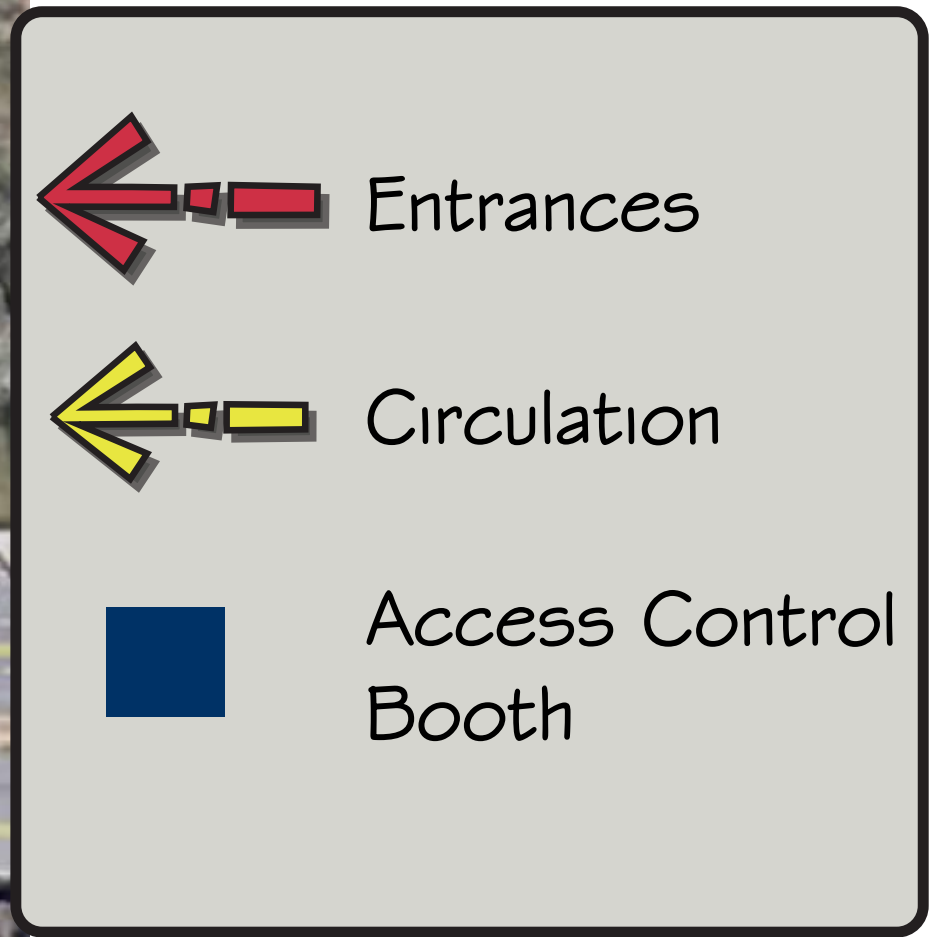
August 21, 2019



Plan - Option C



Existing	595	Parking Spaces
Option C	473	Parking Spaces
	+15	Potential Spaces (Tennis Courts)
	488	Total
	-107	Spaces



Columbine High School

Option C Perspective



Columbine High School

Option C Perspective



Columbine High School

August 21, 2019

Option C Perspective



Columbine High School

August 21, 2019



Columbine High School

August 21, 2019

Option C Perspective



Columbine High School

August 21, 2019



Existing School

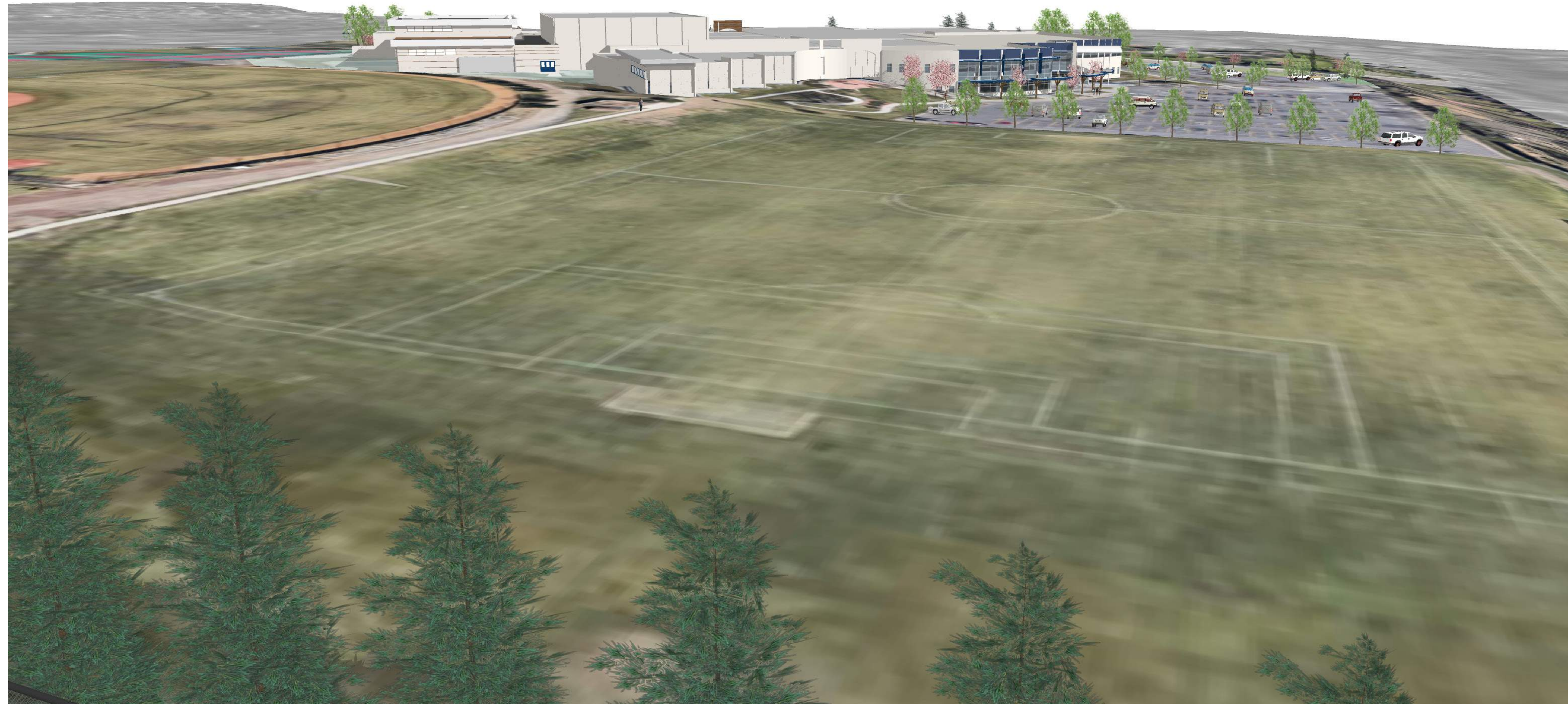


Columbine High School

August 21, 2019



Site - Approach from West



Columbine High School

Site - Approach from West



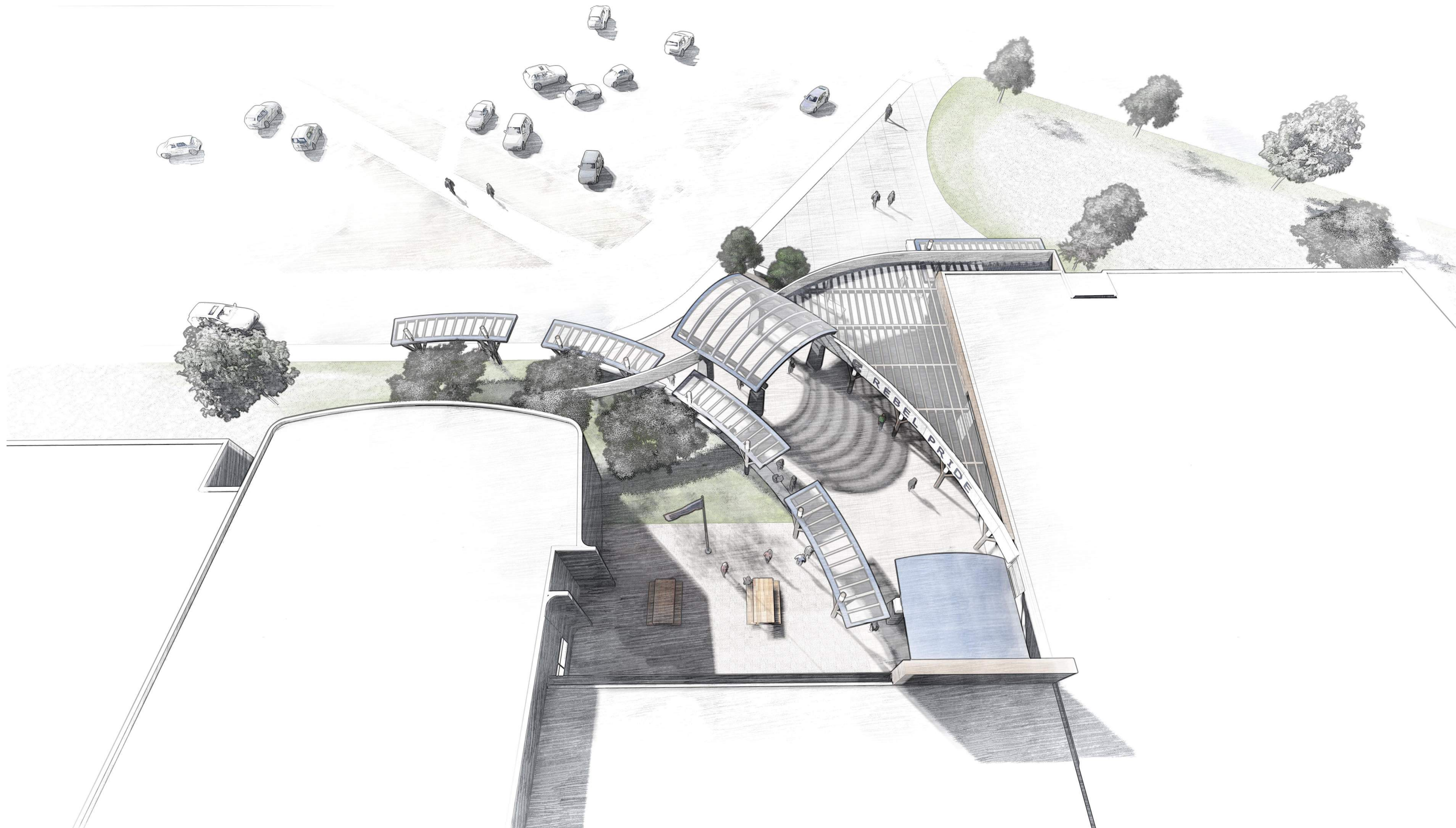
Columbine High School

Site - Approach from West



Columbine High School

August 21, 2019



Columbine High School

Main Entrance Concept





Columbine High School

Main Entrance Concept



Columbine High School

Main Entrance Concept



Columbine High School

Main Entrance Concept



2018 BOND PROGRAM COMMUNICATIONS UPDATE

CAPITAL ASSET ADVISORY COMMITTEE

DECEMBER 2019

COMPLETED WORK:

- Planning Kendrick Lakes Groundbreaking
- Completion of all articulation page build-outs:
 - Going through a QA process right now and should have all pages live on Dec. 12.
- **Website analytics:**
 Dates: Nov. 7 – Dec. 4
 Jeffcobuilds.org and all pages with "jeffcobuilds" in the URL (ie sub-pages)
 Page views: 1,678
 Unique page views: 1,253
- Continue social media posting (posting bond and filling in on regular Jeffco social)
- Attending new DAGs and sharing stories/updates (images below)

UPCOMING WORK:

- Writing year in review piece for media pitching -- will be shared in our Dec. 10. media tips email
- Launch all articulation pages on Dec. 12
- Kendrick Lakes Groundbreaking, **Dec. 17 at 1:45 p.m.**
- Building a tool-kit for school leaders to help them communicate about their bond project with their community
- Continue exterior sign production as requests come in
- 2020 Comms planning

