

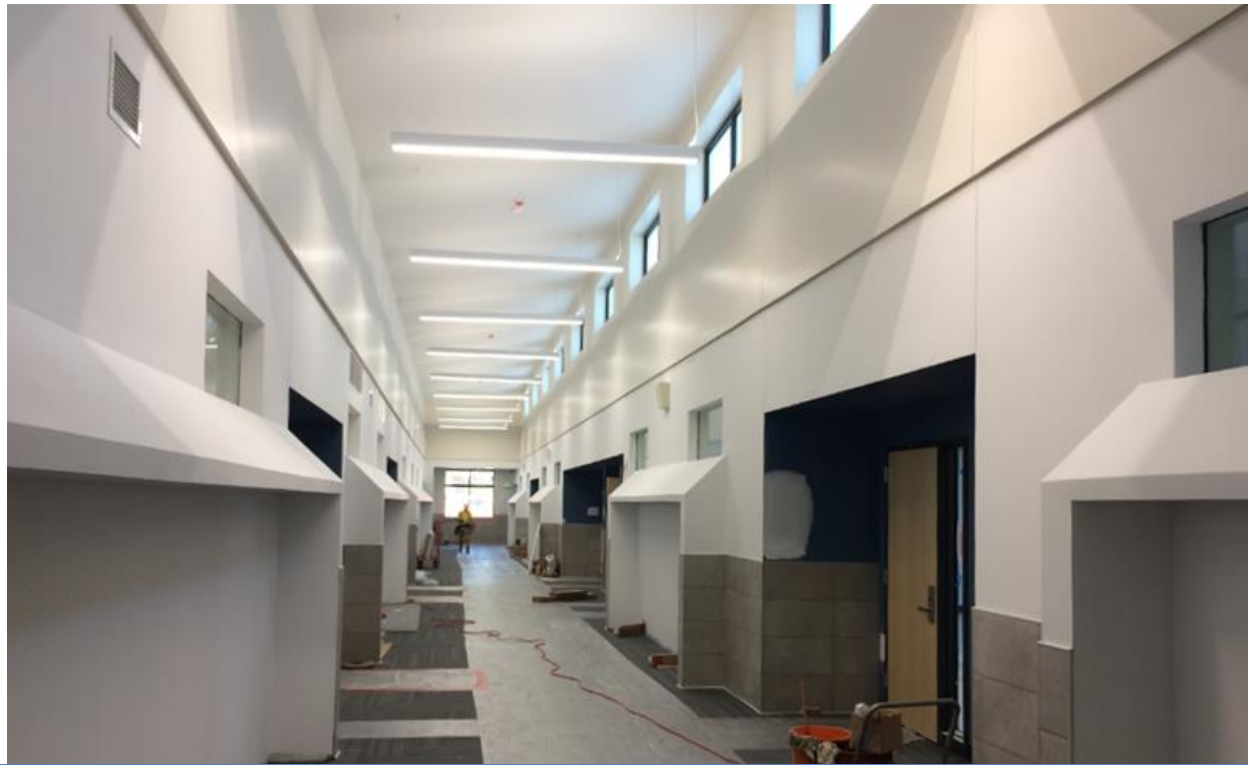


Creighton MS – 8 Classroom Addition Larson Incitti - Roche Constructors

Issue – First floor flooded 4 days ago – lower portion of drywall and carpet needed to be removed – will open without carpet 1st floor



**Creighton MS – Furniture
Meteor**



Ken Caryl MS – 8 Classroom Addition HCM – Phipps Construction

Issue – Locker delivery delay



Summit Ridge MS – 8 Classroom Addition Hollis & Miller – Roche Constructors

Complete



Evergreen HS Storm Water– Piping Replacement
Anderson & Hastings - C&L Water Solutions

Hackberry Hill ES



Devinny ES



Paving – 2 Schools
JVA - Asphalt Specialties



Maple Grove ES



Evergreen MS



Peck ES



Fitzmorris ES

Paving – 4 Schools
JVA - Asphalt Specialties

Eiber ES (CMC)



Lakewood HS (Flynn)



Wilmot ES (Douglass)



RVHS (Grabau)



Green Gables ES (Weathercraft)

Roofing – 5 Schools

WJE – Weathercraft, Douglass, Flynn, CMC, Grabau

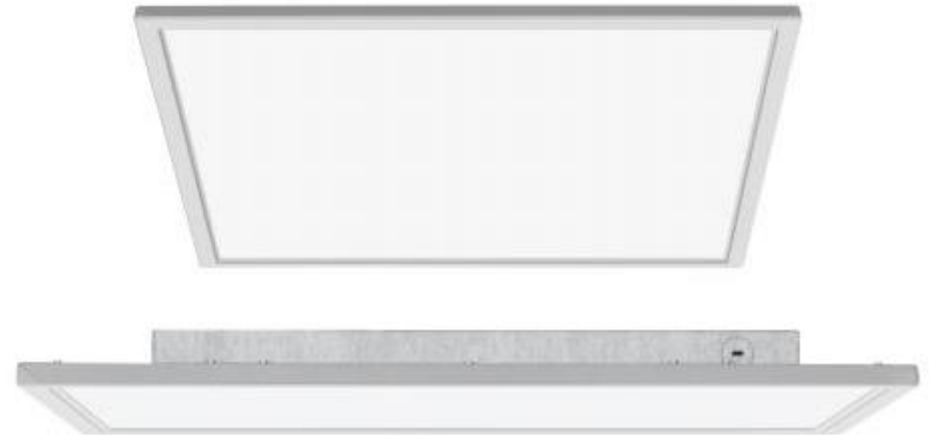
Drake MS – Chiller



Bell MS – Boiler

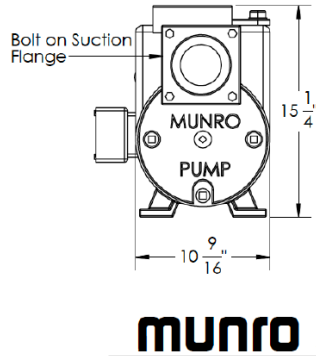


HVAC – 2 Schools
Columbine Engineering – Himmelman Construction



LED Lighting – North Arvada MS
Ackerman Engineering – Piper Electric

D'Evelyn HS (Pump)
Pomona HS (pump)



Evergreen MS



Deane ES

Irrigation – 5 Schools
Design Concepts - Richdale

Columbine Hills ES
DesignScapes



Free Horizon Montessori
DesignScapes



Patterson International
DesignScapes



Wilmore Davis ES
DesignScapes
8/31/19



Playgrounds – 4 Schools
Design Concepts - DesignScapes

Complete



Ralston ES AJI



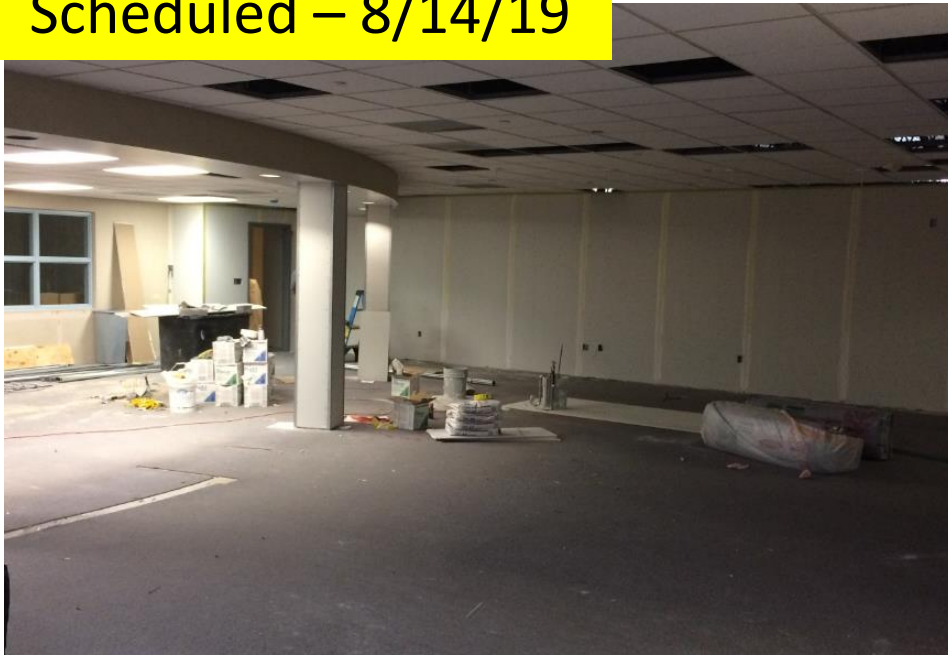
Welchester ES AJI



Belmar ES AJI

Playgrounds – 3 Schools
Design Concepts - AJI

Scheduled – 8/14/19



Everitt MS – DHH Classroom/Toilet & Library CTA - JCM

Possible Issue – Library & Toilet Room may finish late - Backup Plan - Library can coordinate around delay and DHH will use clinic toilet if needed

Complete



**Green Mountain ES - SCS
(Classrooms & Corridor)**



**Bergen Meadow ES - SCS
(classrooms, library, admin)**



**Wilmore-Davis ES - SCS
(Classrooms & Corridors)**



**Free Horizon Montessori - SCS
(lower level)**

Floor Finishes – 4 Schools
DLR – SCS Inc

Complete



Hutchinson ES - Gym Flooring
DLR – Bryan Construction

Complete



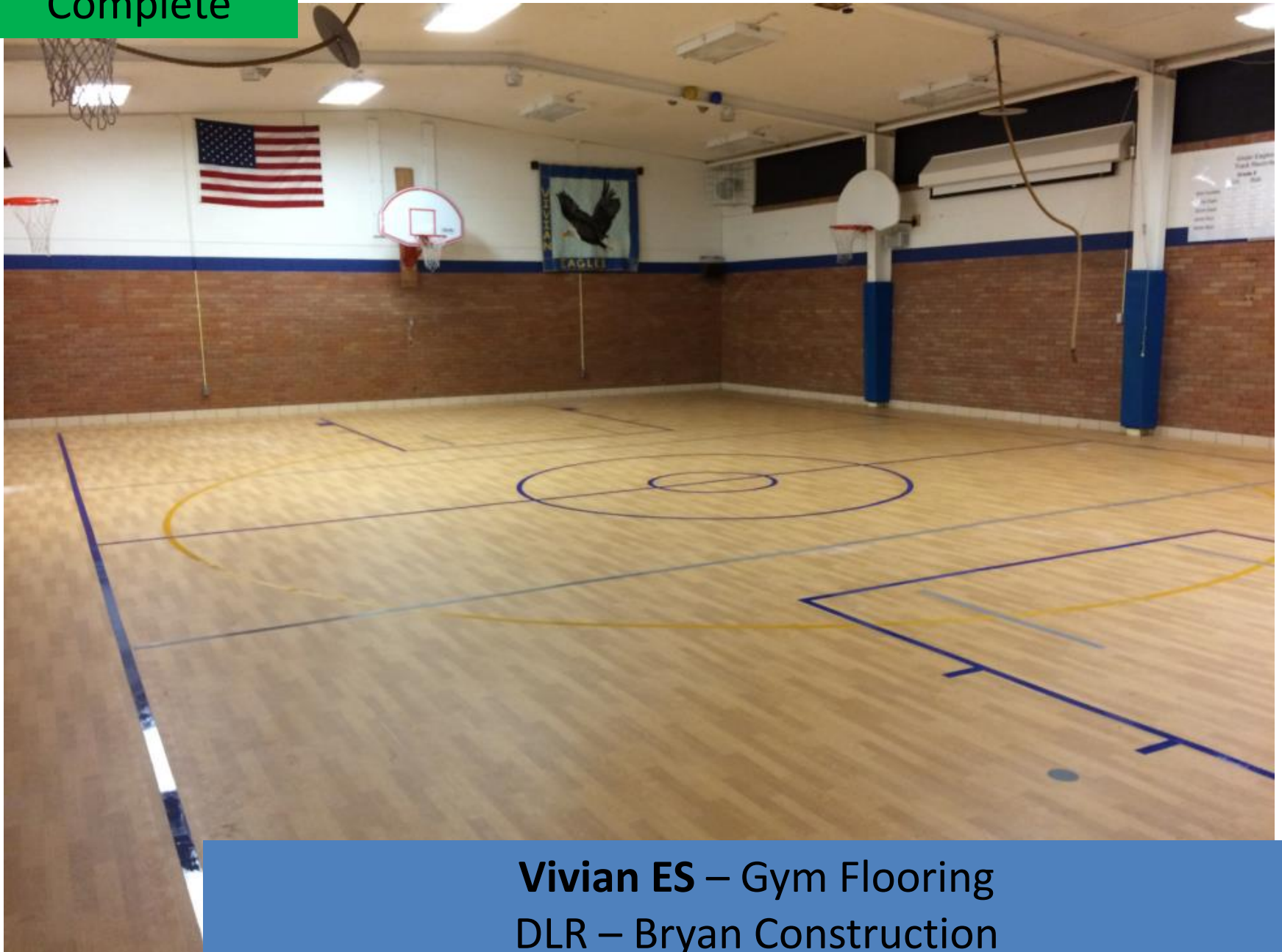
Kullerstrand ES – Gym Flooring
DLR – Bryan Construction

Complete



Welchester ES – Gym Flooring
DLR – Bryan Construction

Complete



Vivian ES – Gym Flooring
DLR – Bryan Construction

Complete



Bradford K-8 – Gym Flooring
DLR – Gary Leimer

Complete



Bradford North – Gym Flooring
DLR – Gary Leimer

Complete



Free Horizons – Gym Flooring
DLR – Gary Leimer

Complete



Before

Wilmore Davis ES – Gym Flooring
DLR – Sport Tech Flooring

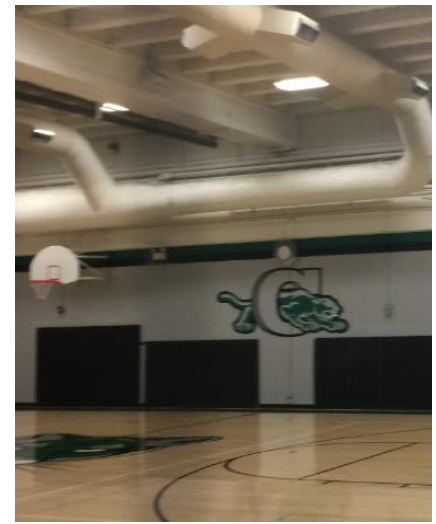
Complete



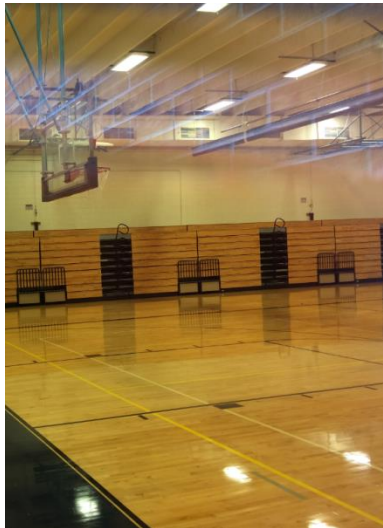
Oberon MS



Manning MS



Carmody MS



Everitt MS



North Arvada MS



Drake MS

6 Schools - Gym Divider Curtains
LOA – Fransen Pittman

Complete



Three Creeks K8– Site Improvements (Playground re-surface)
HCM – ECI

Complete



Evergreen HS – Site Improvements (Turf Field & Track)
HCM – ECI

Scheduled – 8/14/19



Last Month



Chatfield HS – Site Improvements (Turf Field & Track)
HCM – ECI

Scheduled – 8/14/19

Last Month



Lakewood HS – Site Improvements (Turf Field & Track)
HCM – ECI

Scheduled – 8/17/19

Tennis Courts



Last Month



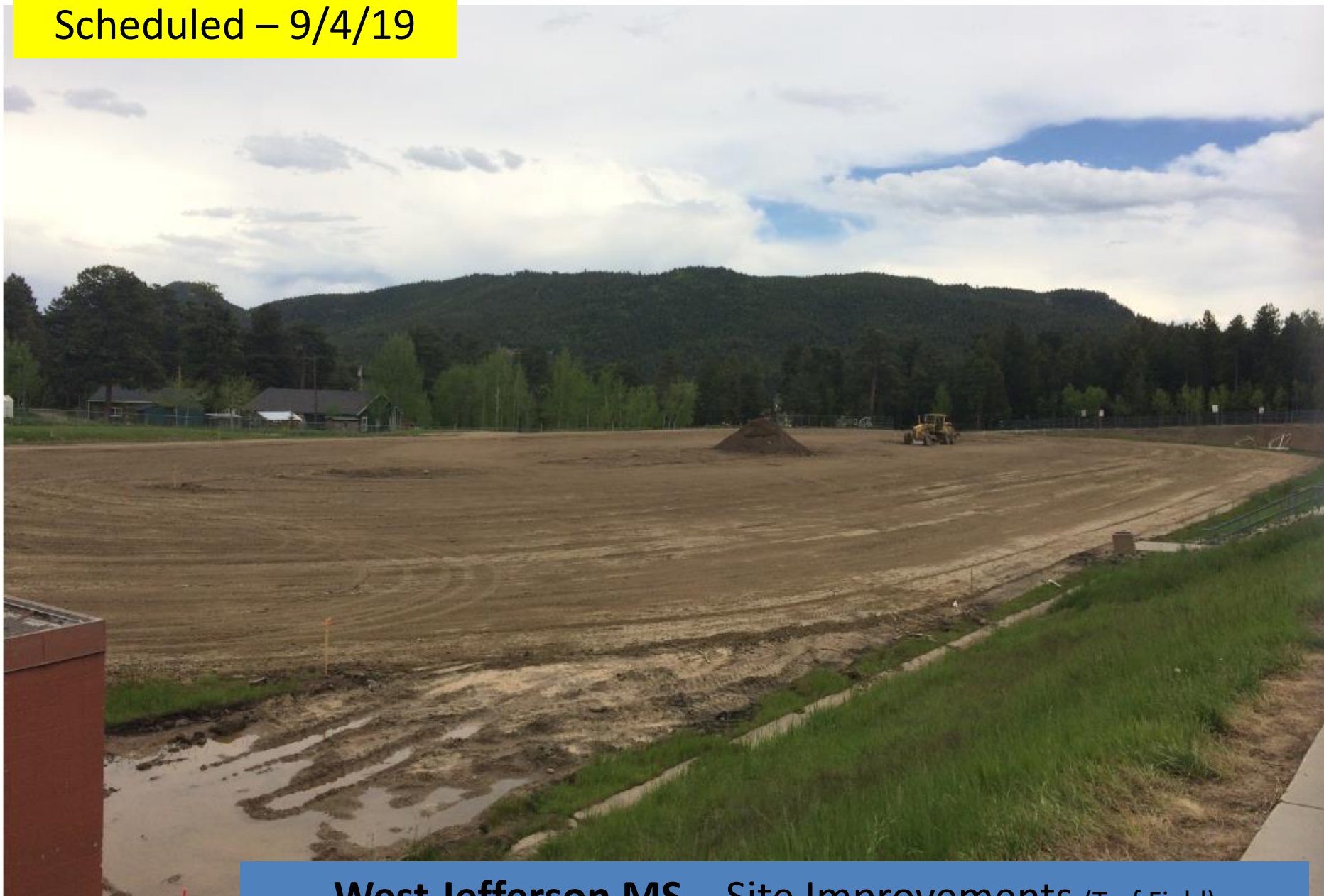
Ralston Valley HS – Site Improvements (Turf, Track & Tennis)
HCM – ECI

Scheduled – 8/17/19



Dakota Ridge HS – Site Improvements (Turf Field & Track)
HCM – ECI

Scheduled – 9/4/19



West Jefferson MS – Site Improvements (Turf Field)
HCM – ECI

Tennis Courts



Scheduled – 9/11/19

Football Field



Baseball Field



Softball Field



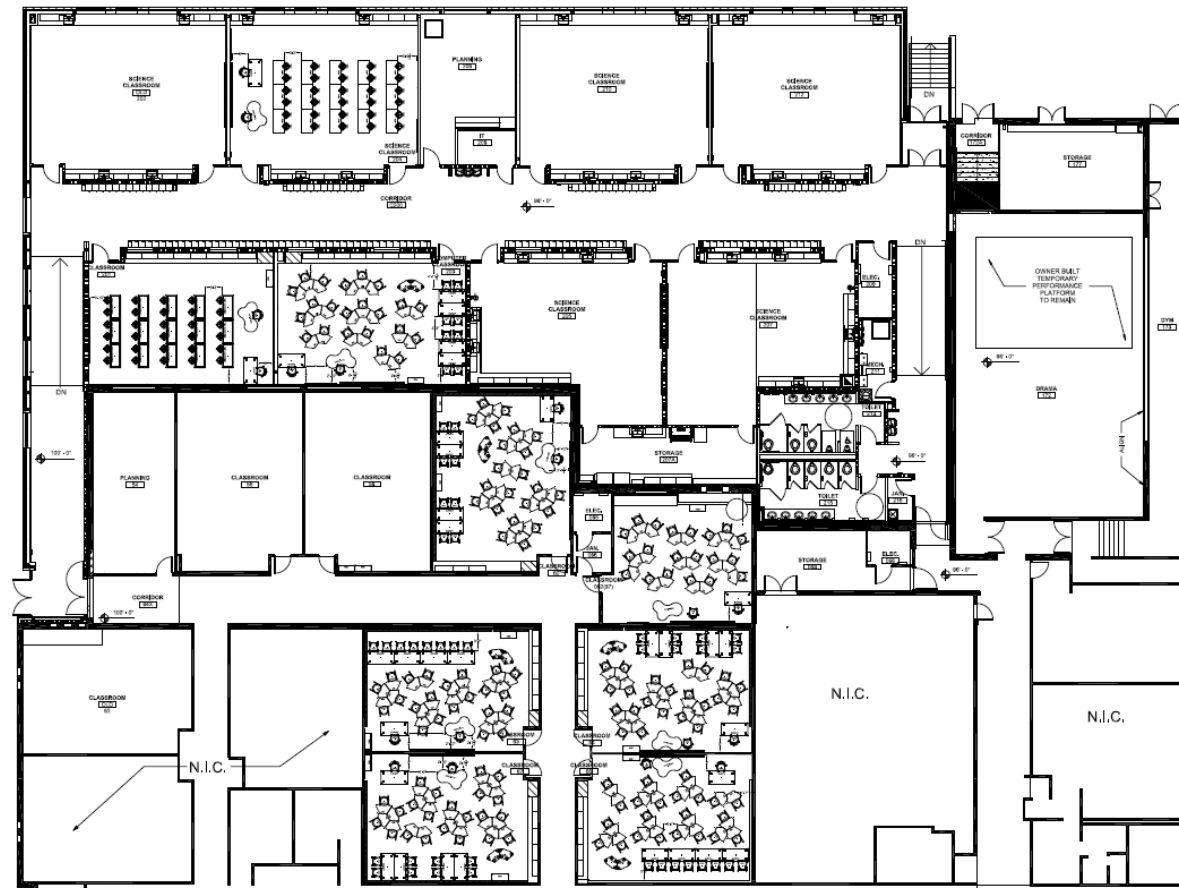
Conifer HS – Site Improvements (Fields, Track, & Tennis)
HCM – ECI

Scheduled – 9/18/19



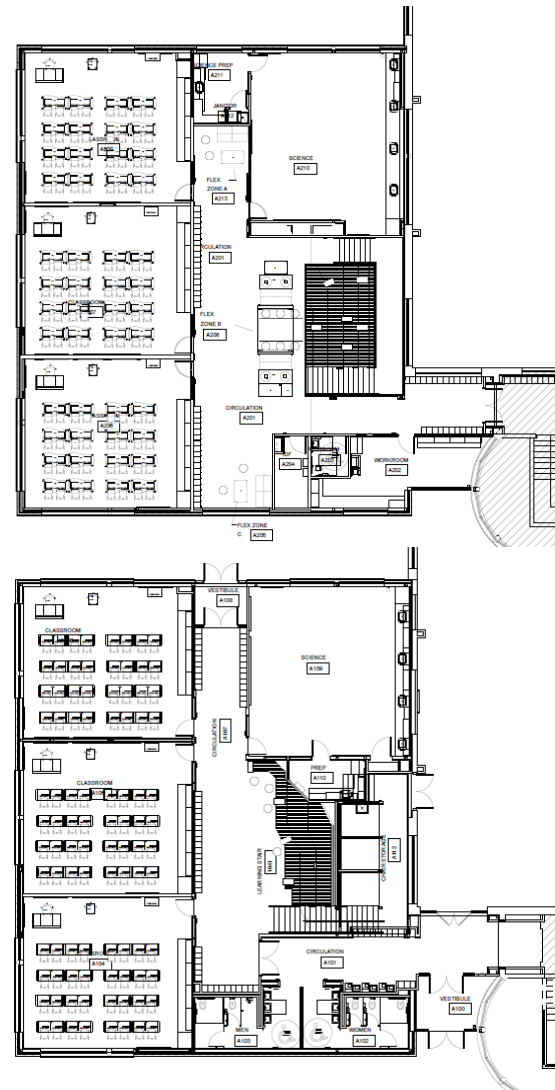
Arvada HS – Site Improvements (Turf Field & Track)
HCM – ECI

August Delivery



Ken Caryl MS – Furniture
OfficeScapes – Pepco – Virco

August
Delivery



Summit Ridge MS – Furniture
OfficeScapes - Virco

Complete



West Jefferson MS – Furniture
Virco

Complete



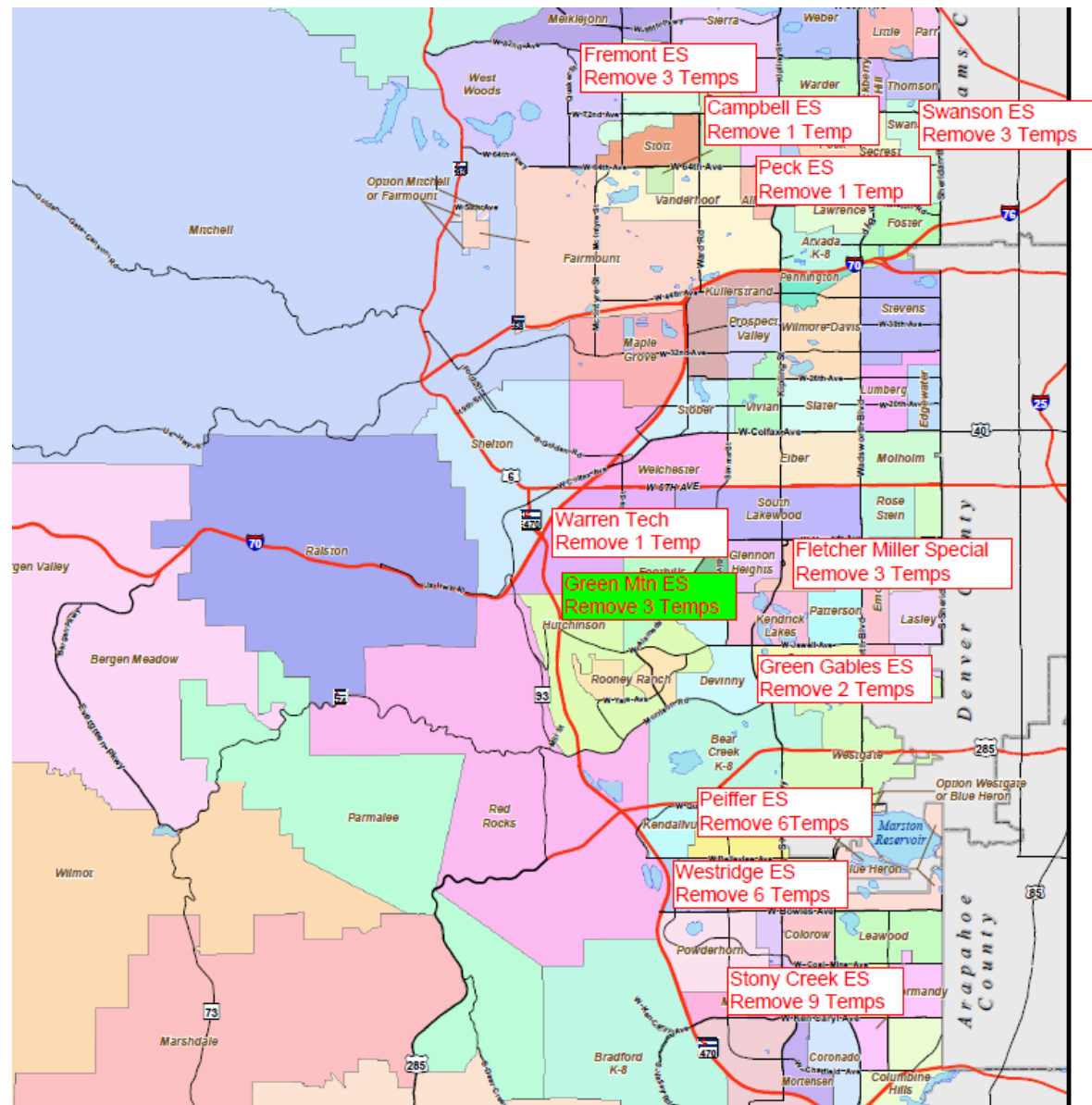
**Arvada K8 – Furniture
OfficeScapes**

Complete



Pomona HS – Furniture
Pepco - Virco

Campbell	ES	1 TMP
Carmody	ES	1 TMP
Green Gables	ES	2 TMP
Green Mountain	ES	3 TMP
Fremont	ES	3 TMP
Peiffer	ES	6 TMP
Stony Creek	ES	9 TMP
Swanson	ES	3 TMP
Westridge	ES	6 TMP
Peck	ES	1 TMP
Fletcher Miller Special	OPT	1 TMP
Warren Tech Central	OPT	1 TMP



Temp Removal – 37 temps – 12 Locations
36 Completed

School	Camera Count	School	Camera Count
Columbine HS Bond	19	Thomson ES Bond	7
Dutch Creek ES Bond	7	Lumberg ES Bond	5
Leawood ES Bond	7	Edgewater ES Bond	4
Normandy ES Bond	7	Molholm ES Bond	7
Warder ES Bond	2	Kendallvue ES Bond	7
Parr ES Bond	7	Peiffer ES Bond	5
Bergen Meadow ES Bond	6	Red Rocks ES Bond	3
Little ES Bond	7	Lasley ES Bond	2
Governor Ranch ES Bond	7	Patterson ES Bond	7
Parmalee ES Bond	2	Green Gables ES Bond	7
Bergen Valley ES Bond	7	Kullerstrand ES Bond	6
Wilmot ES Bond	3	Rose Stein ES Bond	5
Lawrence ES Bond	7	Deane ES Bond	1
Foster ES Bond	7	Stober ES Bond	6
Peck ES Bond	7	Vivian ES Bond	7
Free Horizon Montessori B	10	Pennington ES Bond	5
Columbine Hills ES Bond	7	Blue Heron ES Bond	7
Westgate ES Bond	7	Colorow ES Bond	5
Fitzmorris ES Bond	7	Westridge ES Bond	7
Swanson ES Bond	7	Mt Carbon ES Bond	5
Hackberry Hill ES Bond	7	Powderhorn ES Bond	3
Thomson ES Bond	7	Wilmore-Davis ES Bond	4
		Totals	269



All complete 9/20/19

Security Camera Installations - Elementary Schools
 Artic Areas – Columbine, Pomona, Evergreen, Arvada, Jefferson & Bear Creek
 All 44 schools Quoted on 269 cameras – 25 complete - HSS

Allendale ES KCG ★
Dennison ES KCG
Lawrence ES Jeffco ★
Ryan ES Jeffco ★
Sheridan Green ES KCG ★
Stott ES Jeffco ★
Vanderhoof ES Jeffco
Westridge ES Jeffco ★
Devinny ES KCG ★



Security Glass Installation - Elementary School

Glazing Shop & Ken Caryl Glass - 9 Schools –awaiting 2 school glass deliveries

Complete

Fire Alarm

D'Evelyn OPT
Mandalay MS
Red Rocks ES



Security Upgrades - Fire Alarm
4 Schools



Security Hardware - District Wide - Classrooms

High Schools – 100% Complete MS - 100% Complete ES – 50% Complete

CHARTER	DEBT REPAYMENT	Construction
New American School	\$3,090,152	
Excel Academy		\$3,090,152
Lincoln Academy		\$3,090,152
Compass Montessori Golden	\$4,242,977	
Compass Montessori Wheat Ridge		\$1,937,327
Addenbrooke Classical Academy		\$3,090,152
Montessori Peaks Academy		\$3,090,152
Rocky Mountain Deaf School		\$3,090,152
Mountain Phoenix Community School		\$3,090,152
Collegiate Academy		\$3,090,152
Rocky Mountain Academy of Evergreen	\$3,090,152	
Doral Academy		\$3,090,152
Great Work Montessori		\$3,090,152
Two Roads Charter School	\$3,090,152	
Woodrow Wilson Academy	\$3,090,152	
Jefferson Academy ES		\$0
Jefferson Academy Secondary		\$6,180,304



Jefferson Academy

Charter Schools – Cooperative Strategies

SD PHASE



Columbine HS – Addition
Eidos – Swinerton

While this concept has supporters and merits, there are also valid concerns that were raised. It is clear to me that **no consensus direction exists to rebuild the school.**

Still, while Columbine High School is now arguably one of the safest schools in the world, the “unauthorized individuals” problem at the school must be addressed. In addition to the great lengths that our safety and security team take to address each "unauthorized individual," more supports are necessary to mitigate the impact on the school. **Therefore, we will be implementing changes to enhance the security and privacy of the site, including the creation of an improved and defined perimeter around the building.**

Columbine HS – Addition
Eidos – Swinerton

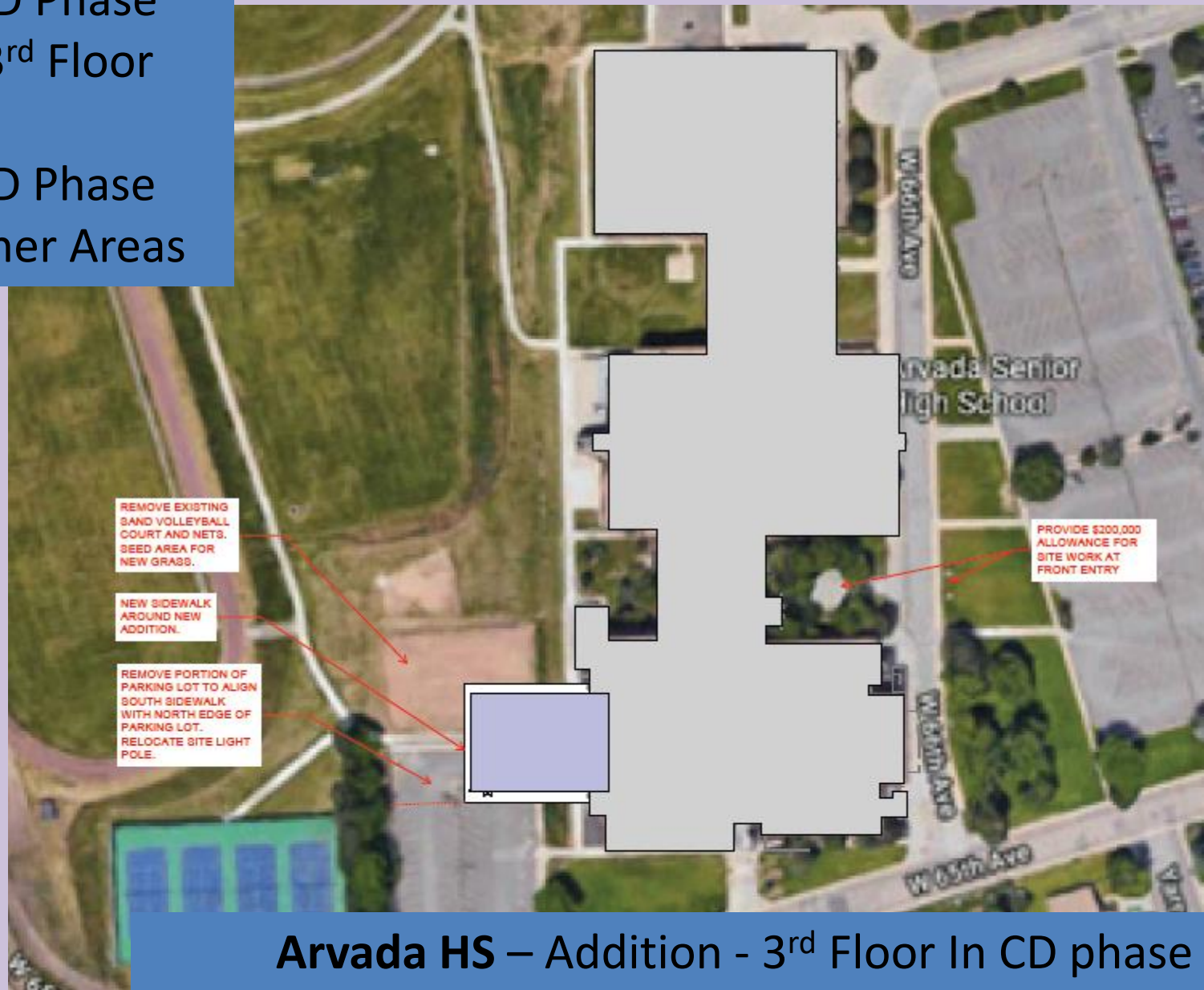
SD PHASE



Green Mountain HS – Addition
MOA – GE Johnson

CD Phase
3rd Floor

SD Phase
Other Areas



Arvada HS – Addition - 3rd Floor In CD phase
HCM – Saunders

Complete



**Arvada HS – Addition
HCM – Saunders**

2nd Floor



 = WORK AREA NO. 1

CR = CLASSROOM
OFF = OFFICE

SACM = SPRAY-APPLIED ACOUSTICAL CEILING MATERIAL

FTM = FLOOR TILES & MASTIC UNDER CARPET

JEFFERSON COUNTY SCHOOL DISTRICT R-1
ALAMEDA HIGH SCHOOL
ASBESTOS ABATEMENT PROJECT
ATTACHMENT A - FLOOR PLAN NO. 1
CLEAR CONSULTING, LLC
MAY 21, 2019

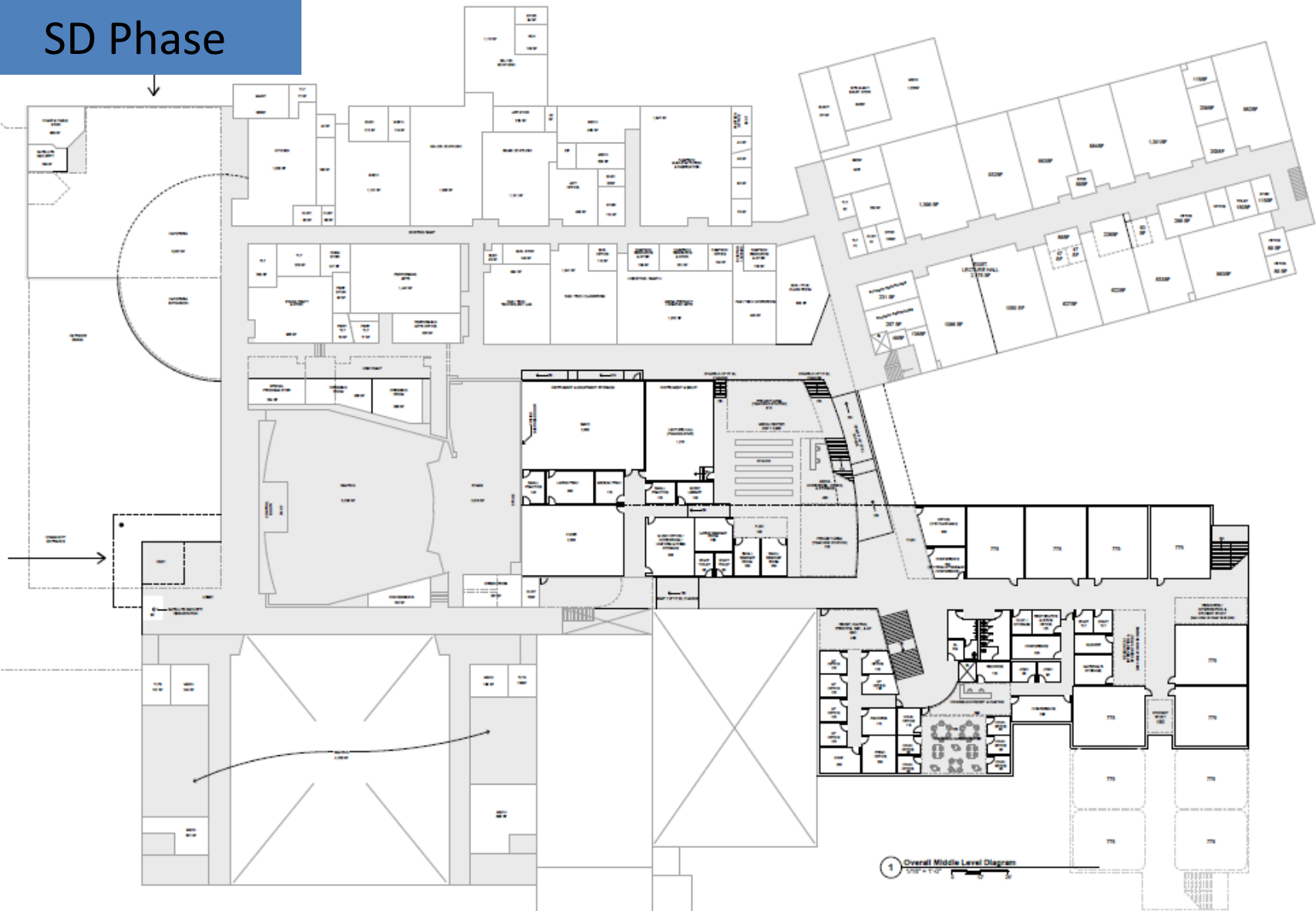
Alameda HS – Asbestos Abatement - Phase I
Clear Consulting – Earth Services & Abatement

SD Phase



Alameda HS – Addition Wold – Phipps

SD Phase



Alameda HS – Addition Wold – Phipps

SD Phase



Alameda HS – Addition
Wold – Phipps

DD PHASE



SOUTHWEST CORNER



Kendrick Lakes ES – Replacement
Larson Incitti – Contractor TBD

SD PHASE



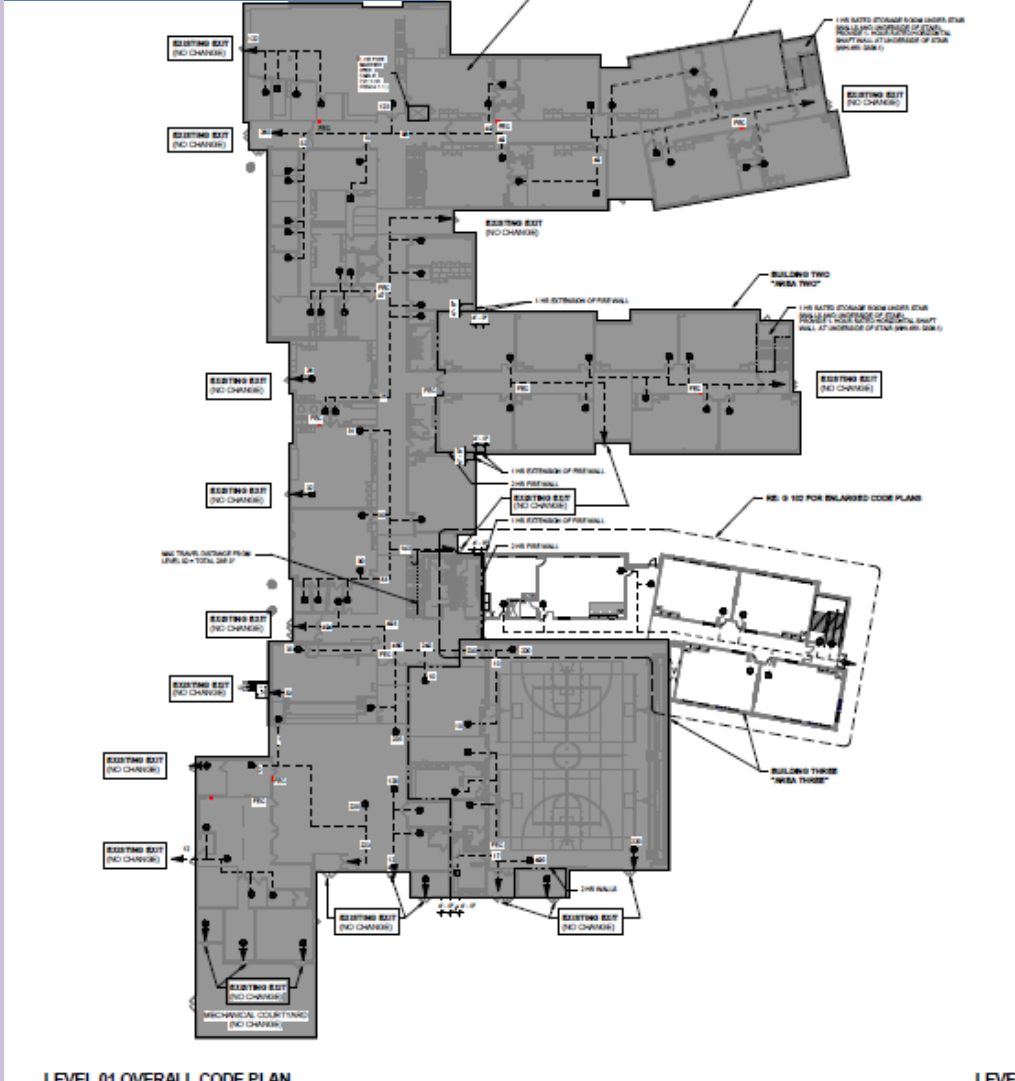
Wilmot ES – Addition
DLR – CMGC Himmelman

Construction

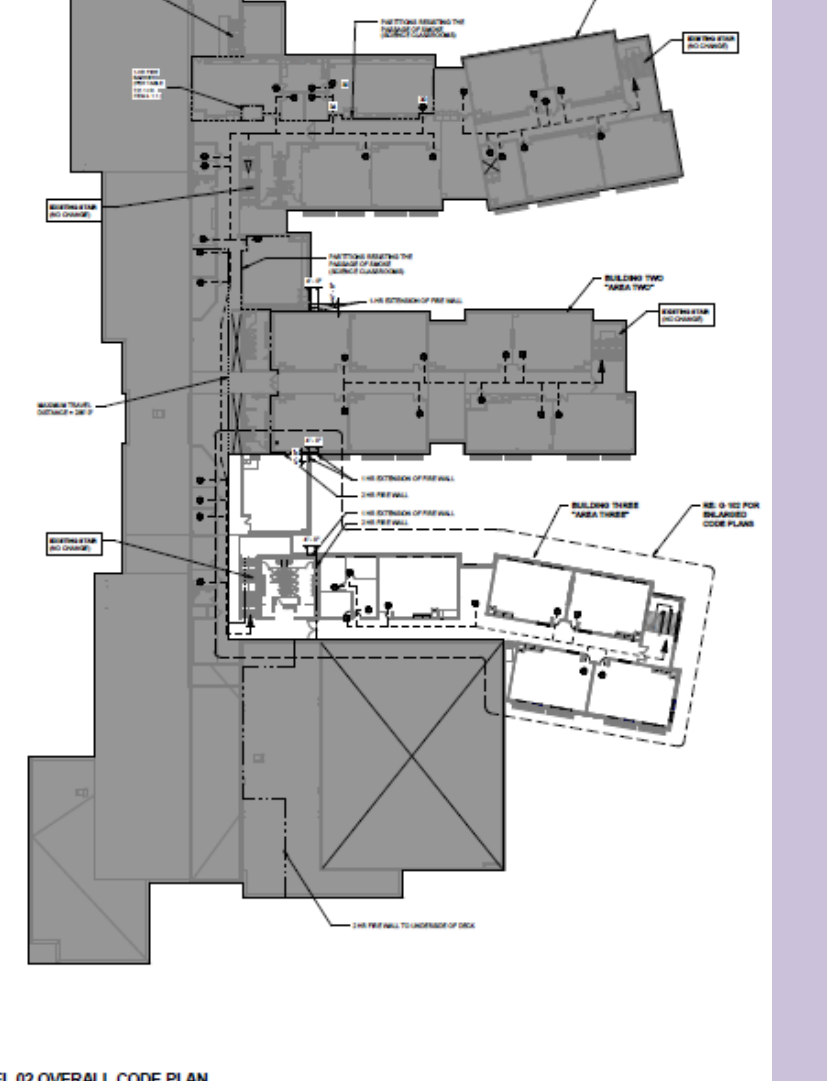


Wilmot ES – Addition
DLR – CMGC Himmelman

CD PHASE



1	LEVEL VI OVERALL CODE PLAN	
	T = 20'0"	



2. LEVEL 02 OVERALL CODE PLAN

Three Creeks K8 – Addition – CD Phase HCM – Phipps

School	Project	Scope	A/E	GC - CMGC	Bond Budget	Phase
Kendrick Lakes ES		Replacement	Larson Incitti	to be Bid	\$17,832,290	DD
Wilmot ES		H Wilmot ES Addition	DLR	HIMMELMAN	\$2,458,268	SD
Green Mountain H		H Green Mountain HS Addition & General Upgrades	MOA	GE Johnson	\$8,507,839	SD
Alameda HS		H Alameda HS Addition & General Upgrades	WOLD	Phipps	\$14,589,304	SD
Three Creeks K-8		H Three Creeks K-8 Addition	HCM	Phipps	\$4,151,850	CD
Arvada HS		H Arvada HS Addition & General Upgrades	HCM	Saunders	\$9,206,447	SD
Columbine HS		H Columbine HS Addition & General Upgrades	EIDOS	Swinerton	\$9,344,225	SD

2020 Projects Currently in Design

Locations	Project Type
7	District Wide Projects
18	Elementary Schools
4	Middle Schools
1	High Schools
3	Option Schools
1	Stadium Complex
34	Total Projects

2020 Projects Kicking off 9/1/19

2018 BOND PROGRAM COMMUNICATIONS UPDATE

CAPITAL ASSET ADVISORY COMMITTEE

AUGUST 2019

COMPLETED AND UPCOMING WORK:

- Sharing progress of construction via social media (posts below):
 - We are tagging all of our photos and social media shares with #jeffcobuilds
 - Scheduling weekly construction updates throughout the summer
- Bond and Mill Fall 2019 Update:
 - Distributed at Leadership meeting in July
 - Will be posted on bond website
 - Distributed digitally via community newsletters
- Website redesign:
 - New site is live: jeffcopublicschools.org/jeffcobuilds
 - Phase II work includes building out each individual articulation area page

Website analytics:

Dates: July 1 – July 31, 2019

<https://jeffcopublicschools.org/services/facilities/jeffcobuilds> and all pages with "jeffcobuilds" in the URL (ie sub-pages)

Page views: 9,217

Unique page views: 7,028

Big dates for site hits:

7/11/19 – 2570 page views

7/22/19 – 1380 page views

7/29/19 – 560 page view

- Media:
 - Arvada Press - [Story on Arvada Track](#) (published)
- Planning ribbon cuttings and groundbreakings for the fall
 - Creighton: August 22 from 4:30-5 pm. A formal invitation will be sent to the CAAC
- Exterior signs are in final round of design
- Video in production for "big reveal" of Creighton MS to teachers before school starts

