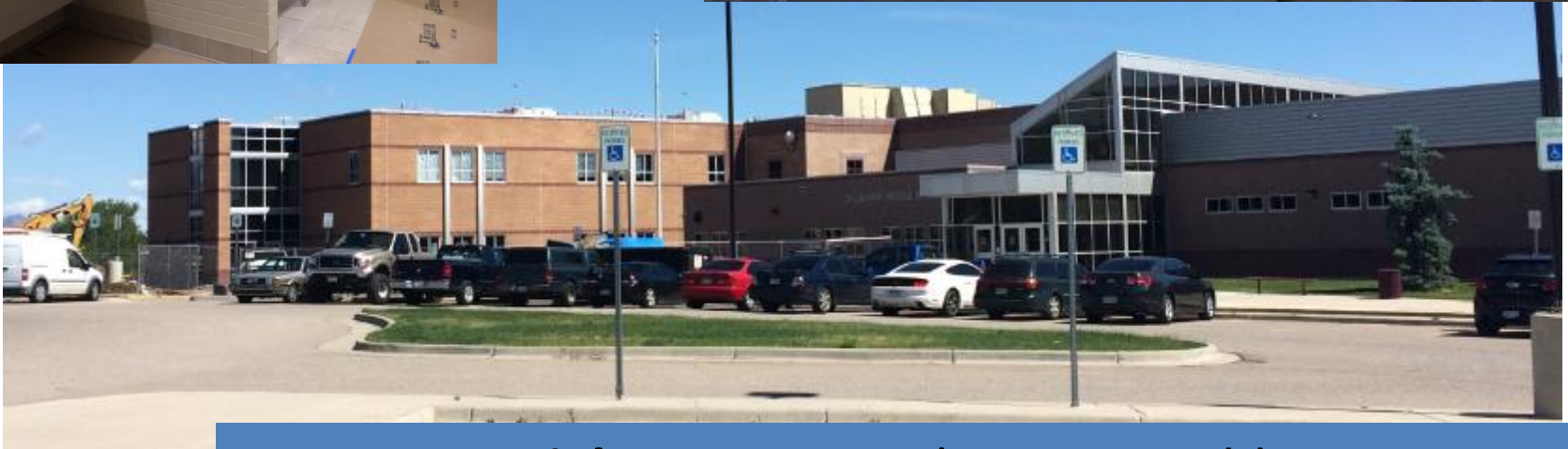


Last Month



Creighton MS – 8 Classroom Addition
Larson Incitti - Roche Constructors



Last Month



Ken Caryl MS – 8 Classroom Addition HCM – Phipps Construction

Issue - FA Devices – Back ordered – evaluating acceptable substitute parts until delivery, Locker delivery delay

Last Month



Summit Ridge MS – 8 Classroom Addition
Hollis & Miller – Roche Constructors
Scheduled completion 8/8

Complete



Last Month

**Evergreen HS Storm Water– Piping Replacement
Anderson & Hastings - C&L Water Solutions**

Bradford Intermediate (Mid July Start)
Ryan ES (Mid July Start)

Devinny ES



Hackberry Hill ES



Paving – 4 Schools
JVA - Asphalt Specialties



Maple Grove ES



Evergreen MS



Peck ES



Fitzmorris ES

Paving – 4 Schools
JVA - Asphalt Specialties

Eiber ES (CMC) 46% Complete



Lakewood HS (Flynn) 28% Complete



Wilmot ES (Douglass) 54% Complete



RVHS (Grabau)
35% Complete



Green Gables ES (Weathercraft)
27% Complete

Roofing – 5 Schools

WJE – Weathercraft, Douglass, Flynn, CMC, Grabau

Drake MS – Chiller Shipping 7/19/19

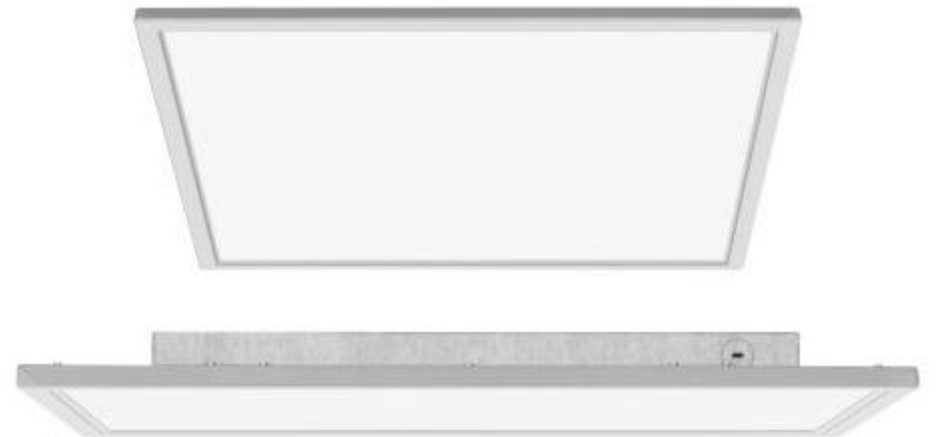
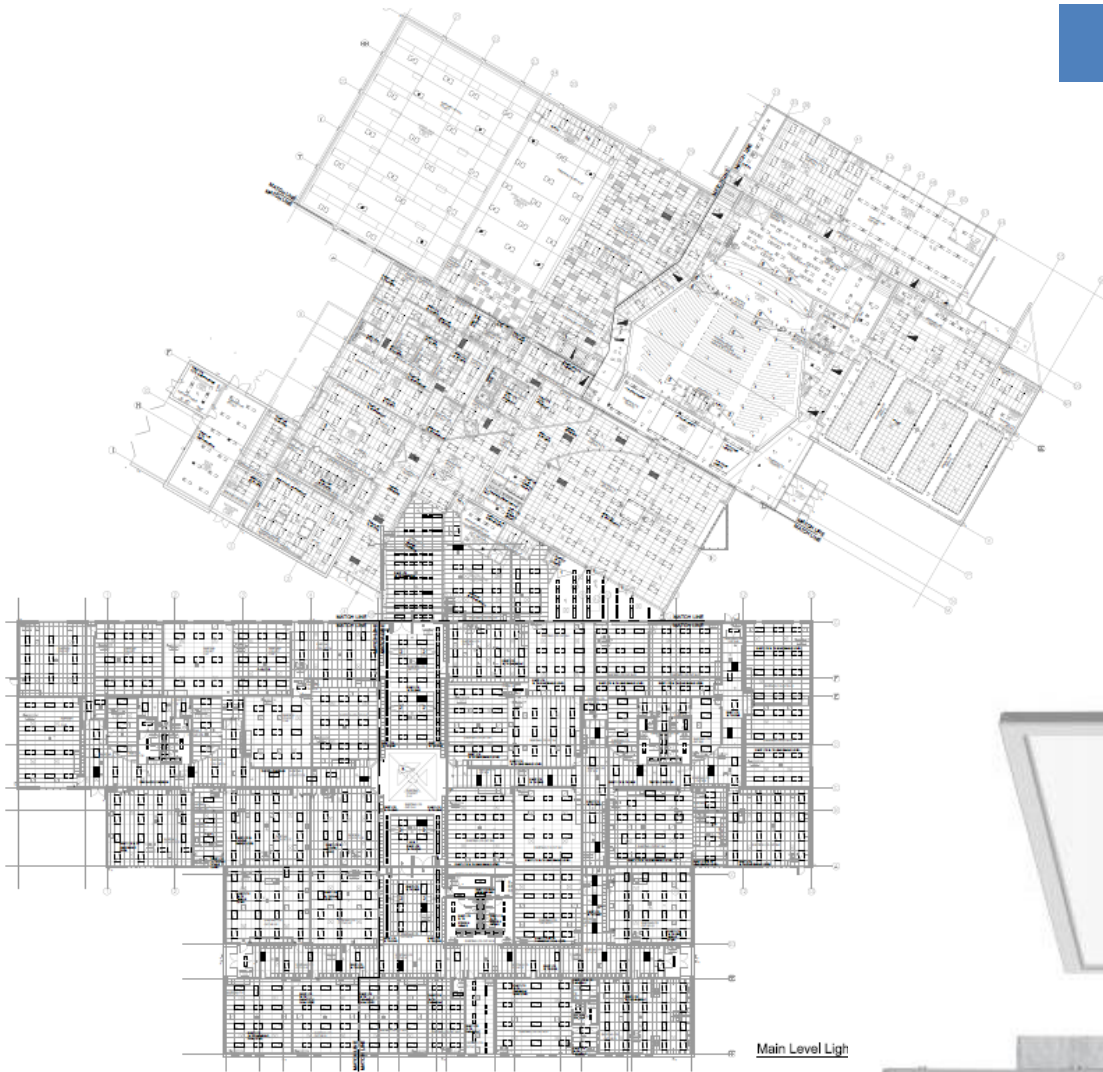


Bell MS – Boiler



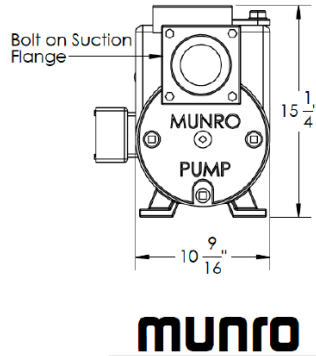
HVAC – 2 Schools
Columbine Engineering – Himmelman Construction

Installation - Ongoing



LED Lighting – North Arvada MS
Ackerman Engineering – Piper Electric

D'Evelyn HS (Pump)
Pomona HS (pump)



Colorow ES



Evergreen MS



Deane ES

Irrigation – 5 Schools
Design Concepts - Richdale



Columbine Hills ES
DesignScapes

Free Horizon Montessori
DesignScapes



Patterson International
DesignScapes



Wilmore Davis ES
DesignScapes



Playgrounds – 4 Schools
Design Concepts - DesignScapes



Ralston ES AJI



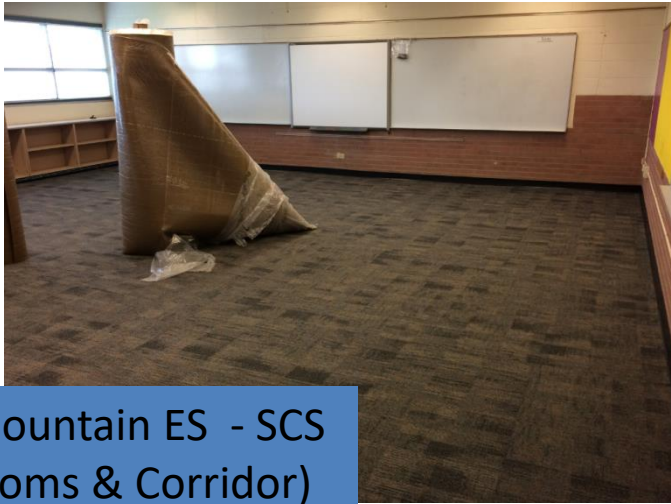
Welchester ES AJI



Belmar ES AJI

Playgrounds – 3 Schools

Design Concepts - AJI



**Green Mountain ES - SCS
(Classrooms & Corridor)**



**Bergen Meadow ES - SCS
(classrooms, library, admin)**



**Wilmore-Davis ES - SCS
(Classrooms & Corridors)**



**Free Horizon Montessori - SCS
(lower level)**

Issue – School looking at changing carpet pattern

Floor Finishes – 4 Schools

DLR – SCS Inc



Hutchinson ES (gym) – BRYAN
Abatement



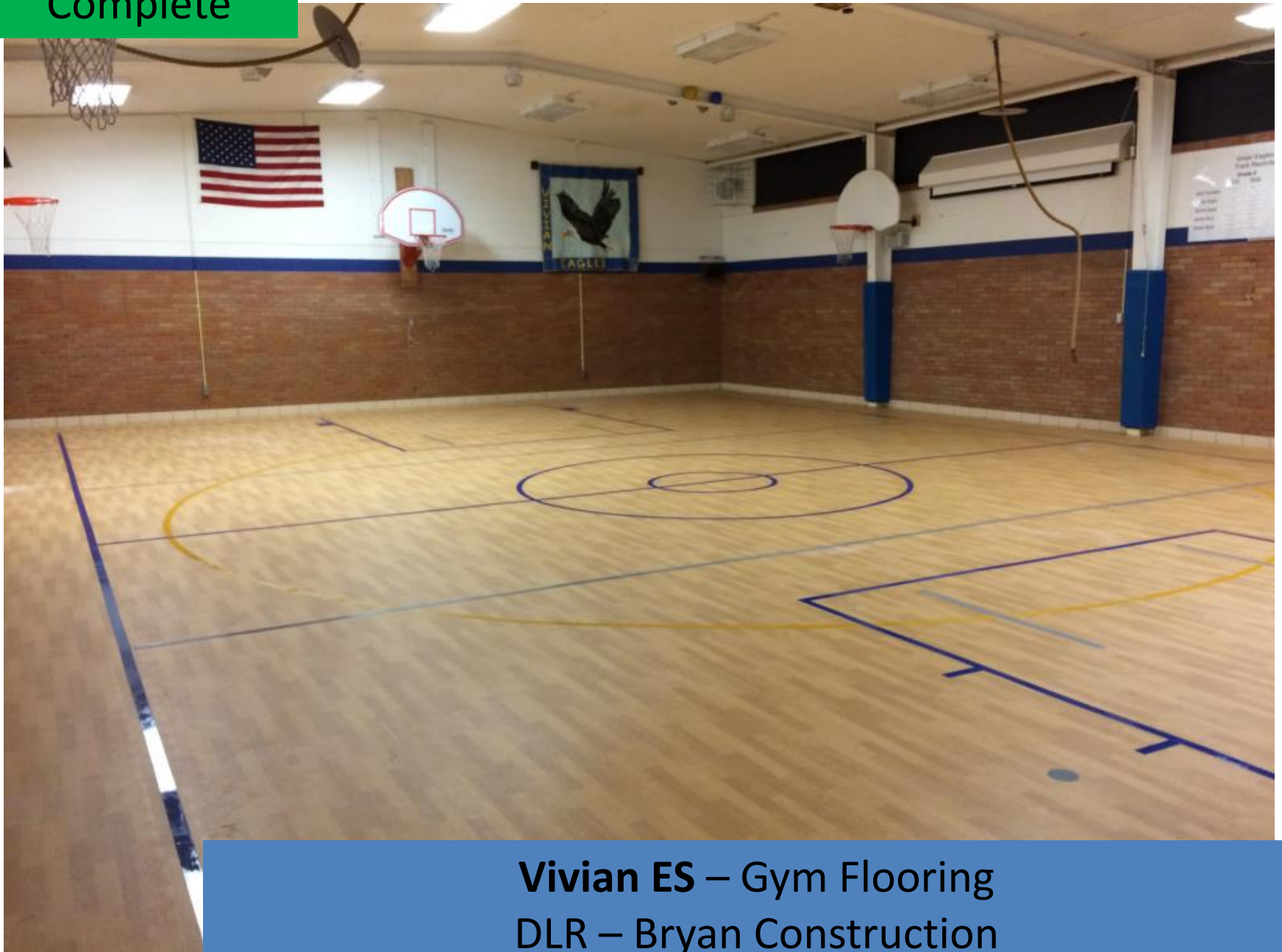
Welchester ES (gym) – BRYAN
Abatement



Kullerstrand ES (gym) - BRYAN

Gym Floor Finishes – 3 Schools
DLR – Bryan Construction

Complete



Vivian ES – Gym Flooring
DLR – Bryan Construction

Complete



Bradford K-8 – Gym Flooring
DLR – Gary Leimer

Complete



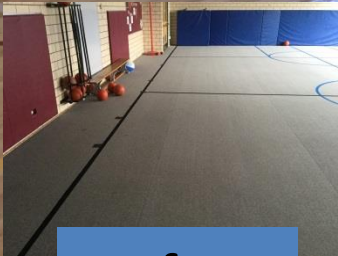
Bradford North – Gym Flooring
DLR – Gary Leimer

Complete



Free Horizons – Gym Flooring
DLR – Gary Leimer

Complete



Before

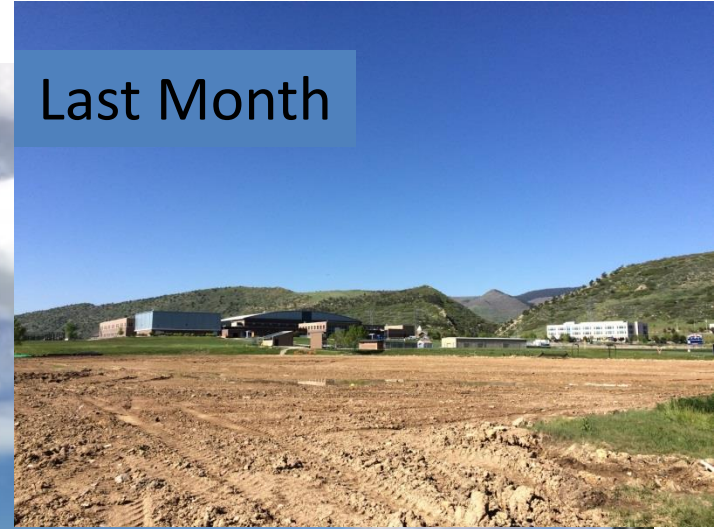
Wilmore Davis ES – Gym Flooring
DLR – Sport Tech Flooring



Last Month

Chatfield HS – Site Improvements (Turf Field & Track)
HCM – ECI

Last Month



Dakota Ridge HS – Site Improvements (Turf Field & Track)
HCM – ECI



Lakewood HS – Site Improvements (Turf Field & Track)
HCM – ECI

Tennis Courts



Last Month



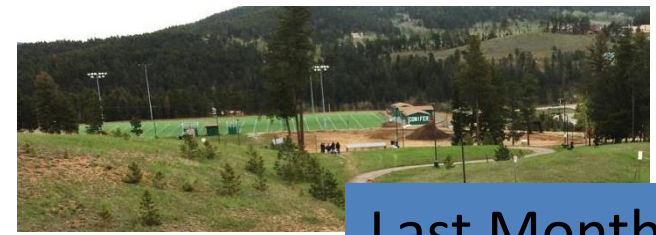
Ralston Valley HS – Site Improvements (Turf, Track & Tennis)
HCM – ECI

Last Month



Arvada HS – Site Improvements (Turf Field & Track)
HCM – ECI

Tennis Courts



Last Month



Football Field



Baseball Field



Softball Field



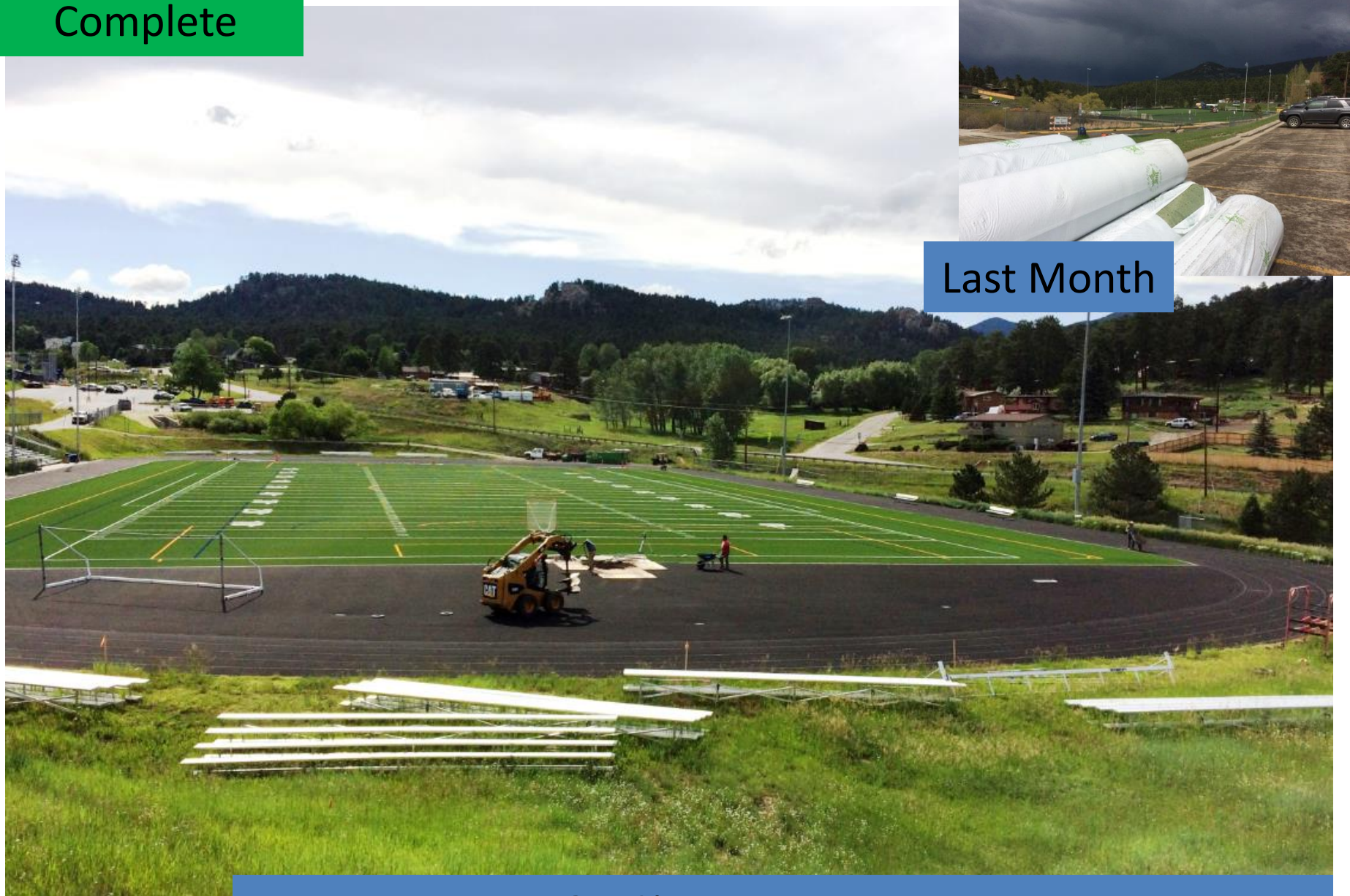
Conifer HS – Site Improvements (Fields, Track, & Tennis)
HCM – ECI



Last Month

West Jefferson MS – Site Improvements (Turf Field)
HCM – ECI

Complete



Evergreen HS – Site Improvements (Turf Field & Track)
HCM – ECI



Three Creeks K8– Site Improvements (Playground re-surface)
HCM – ECI

SD PHASE



Columbine HS – Addition
Eidos – Swinerton

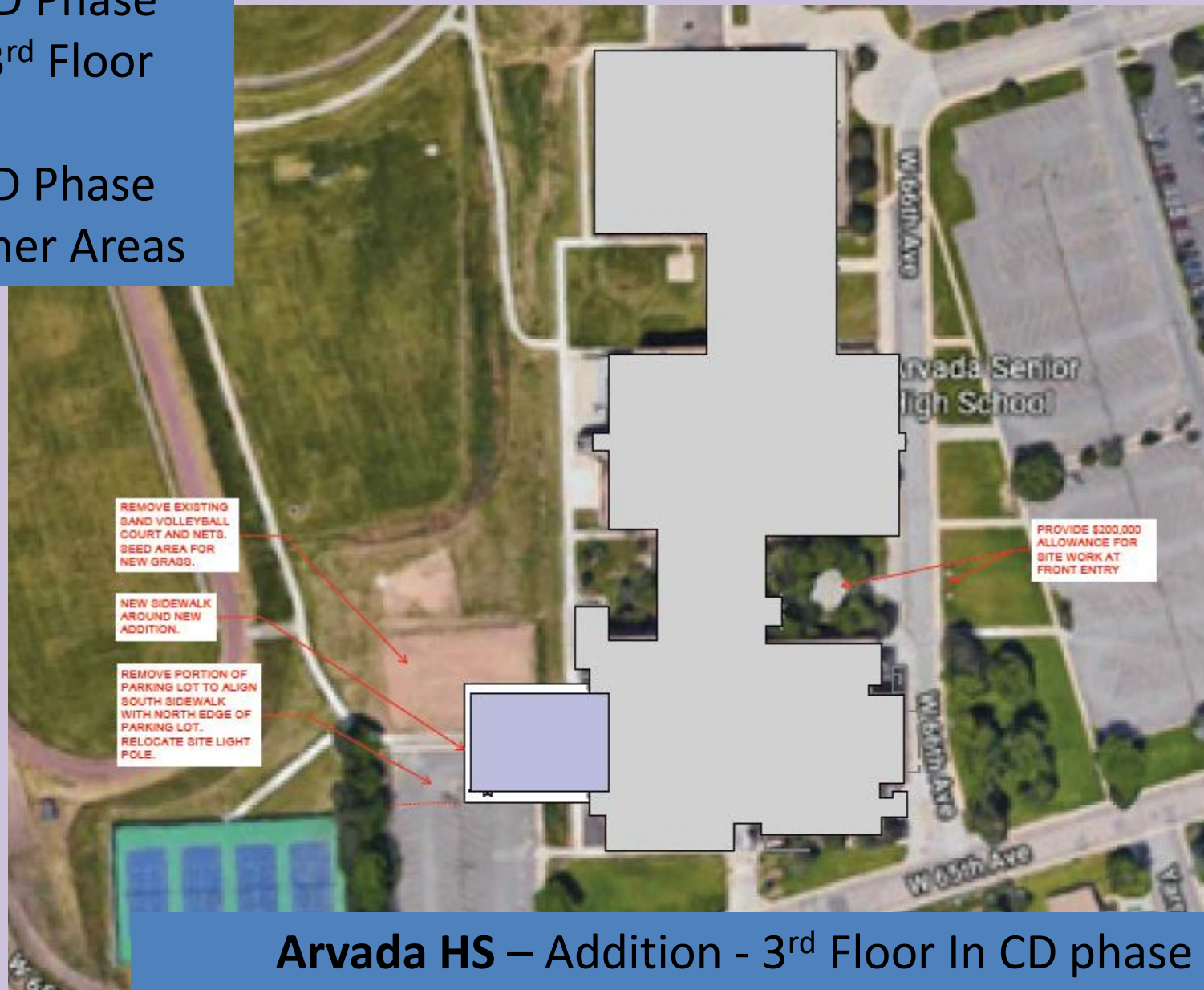
SD PHASE



Green Mountain HS – Addition
MOA – GE Johnson

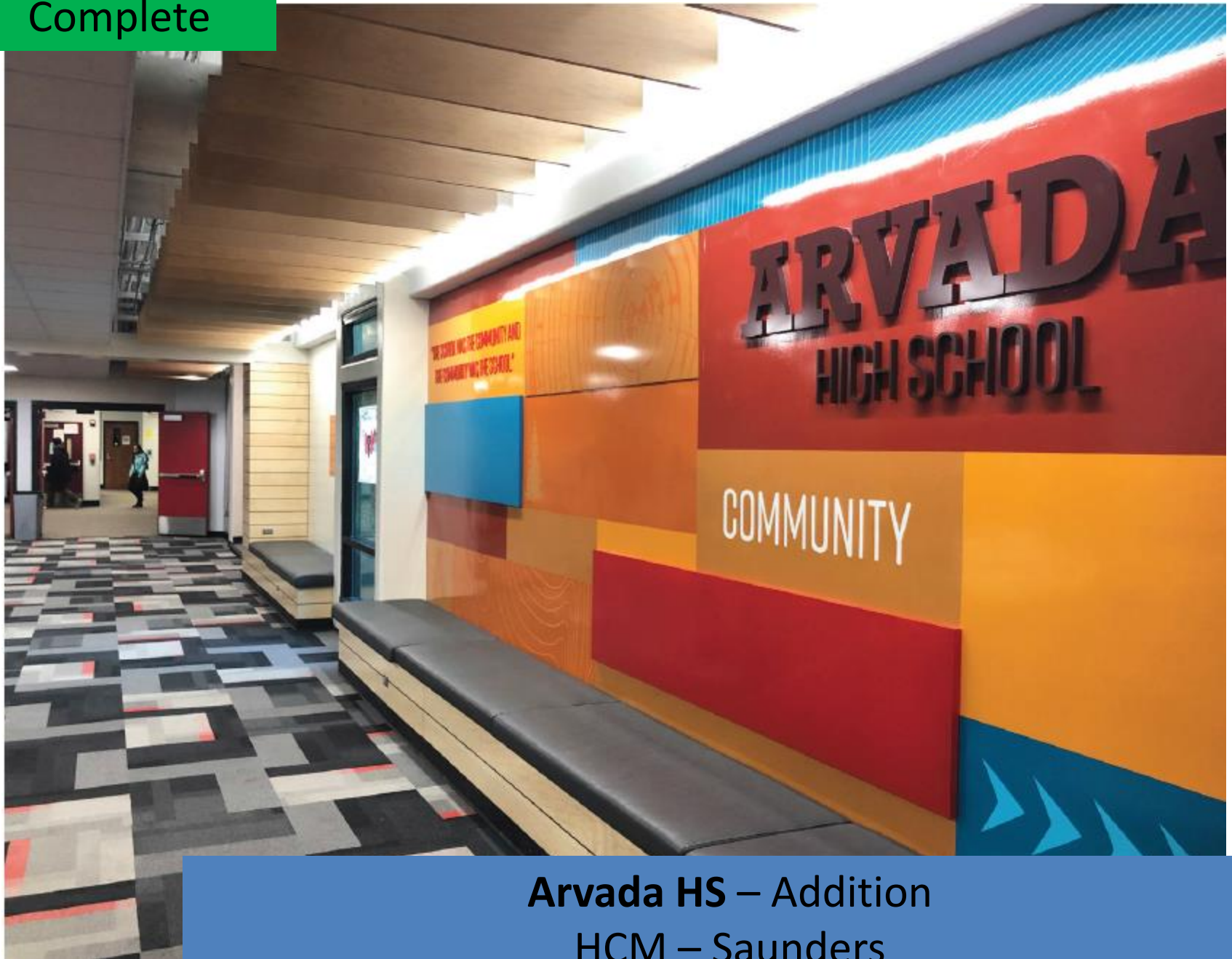
CD Phase
3rd Floor

SD Phase
Other Areas



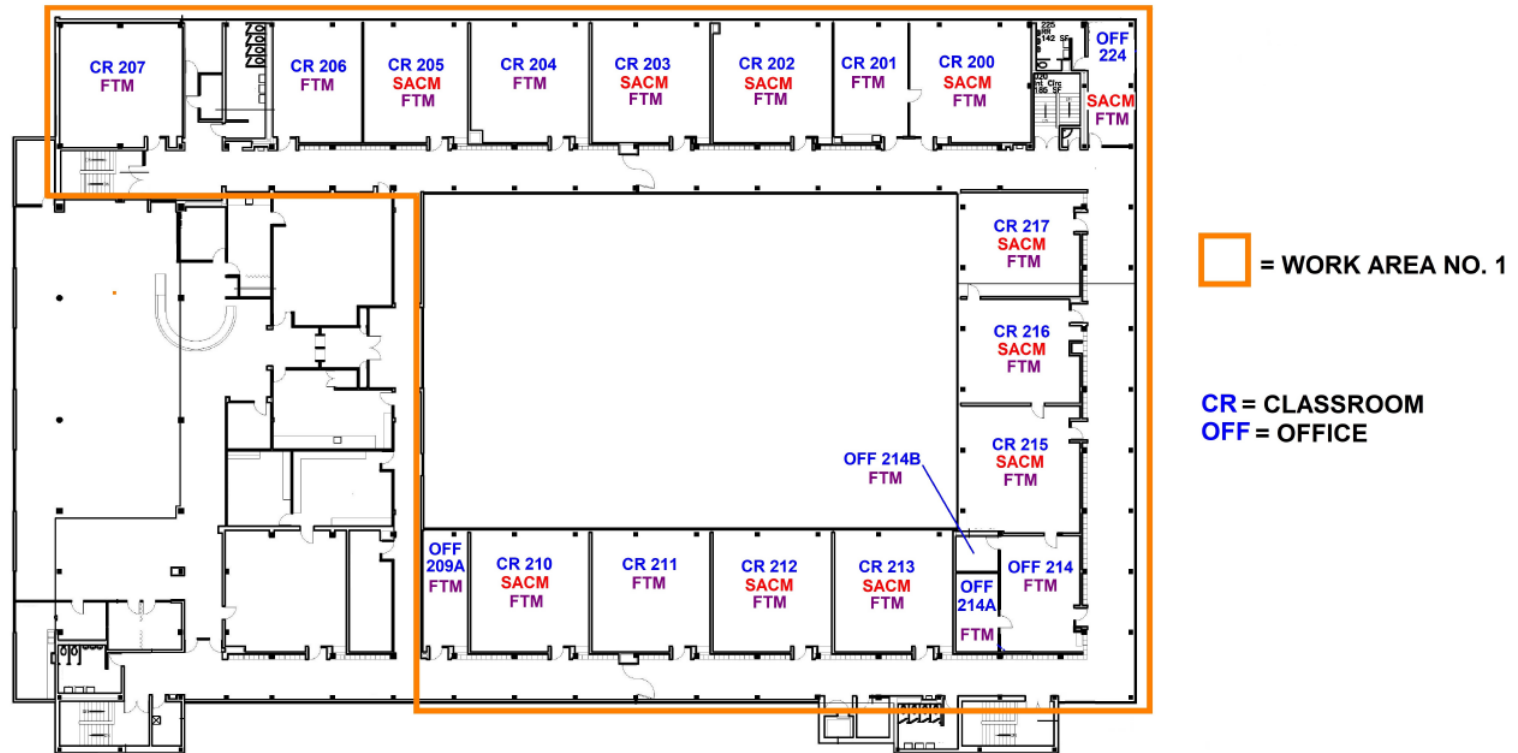
Arvada HS – Addition - 3rd Floor In CD phase
HCM – Saunders

Complete



**Arvada HS – Addition
HCM – Saunders**

Removal Starts
July 8



SACM = SPRAY-APPLIED ACOUSTICAL CEILING MATERIAL

FTM = FLOOR TILES & MASTIC UNDER CARPET

JEFFERSON COUNTY SCHOOL DISTRICT R-1
ALAMEDA HIGH SCHOOL
ASBESTOS ABATEMENT PROJECT
ATTACHMENT A - FLOOR PLAN NO. 1
CLEAR CONSULTING, LLC
MAY 21, 2019

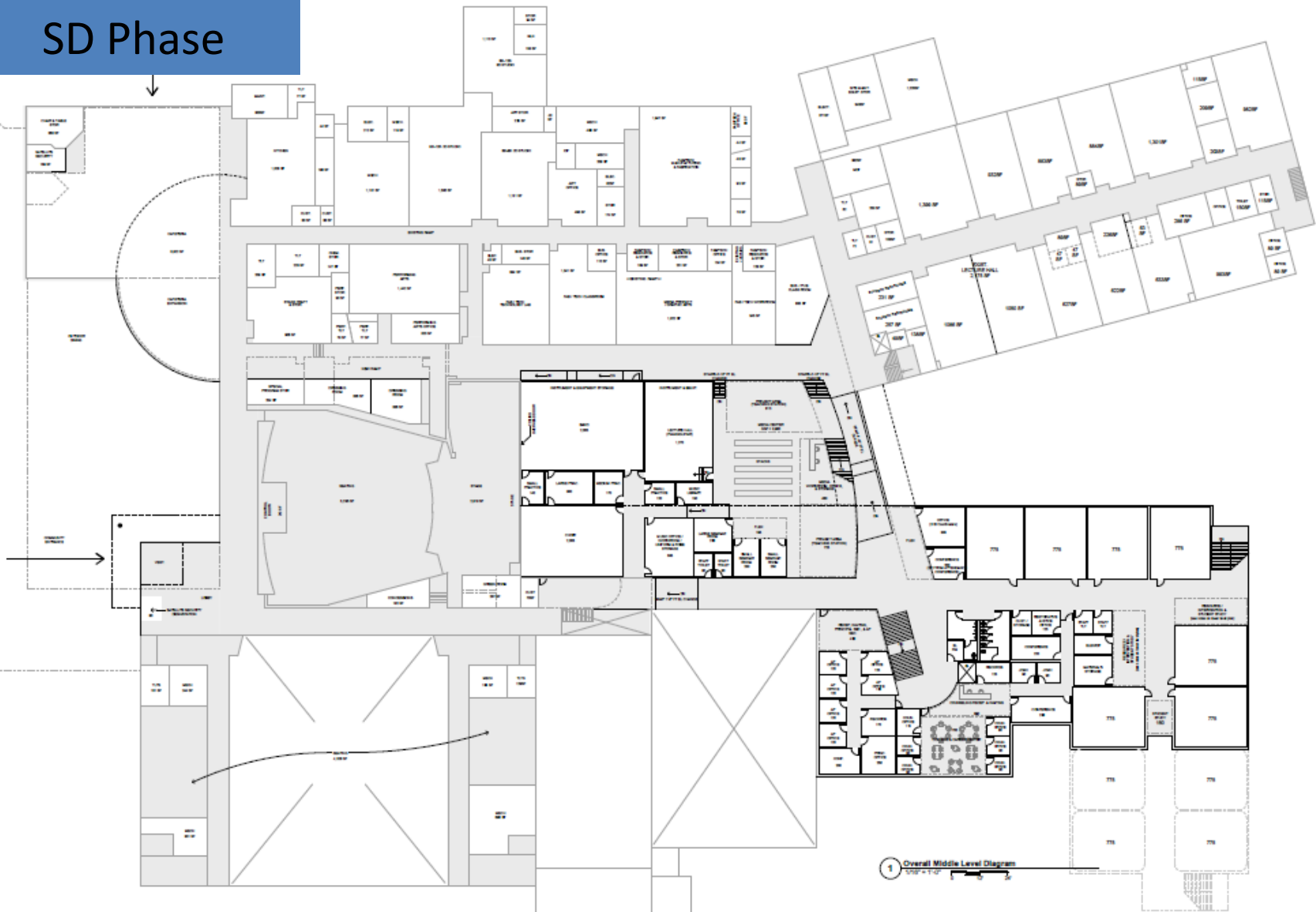
Alameda HS – Asbestos Abatement - Phase I
Clear Consulting – Earth Services & Abatement

SD Phase



Alameda HS – Addition Wold – Phipps

SD Phase



Alameda HS – Addition Wold – Phipps

SD Phase



Alameda HS – Addition
Wold – Phipps

DD PHASE



SOUTHWEST CORNER



Kendrick Lakes ES – Replacement
Larson Incitti – Contractor TBD

DD PHASE



Wilmot ES – Addition
DLR – CMGC Himmelman

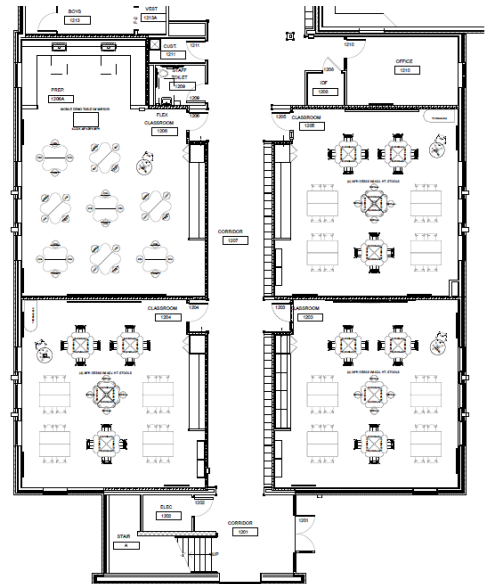
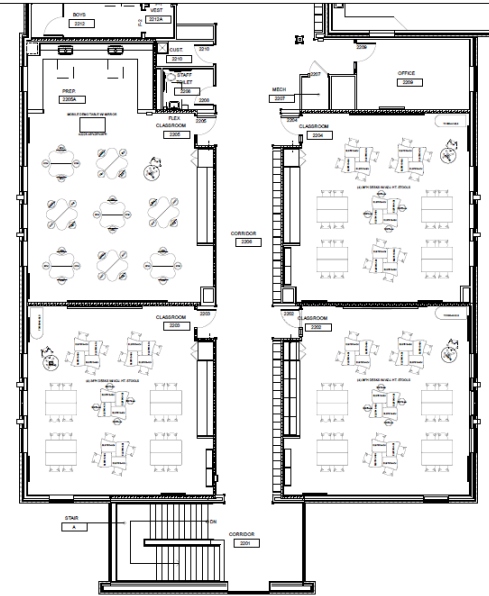
CD PHASE



Three Creeks K8 – Addition – CD Phase

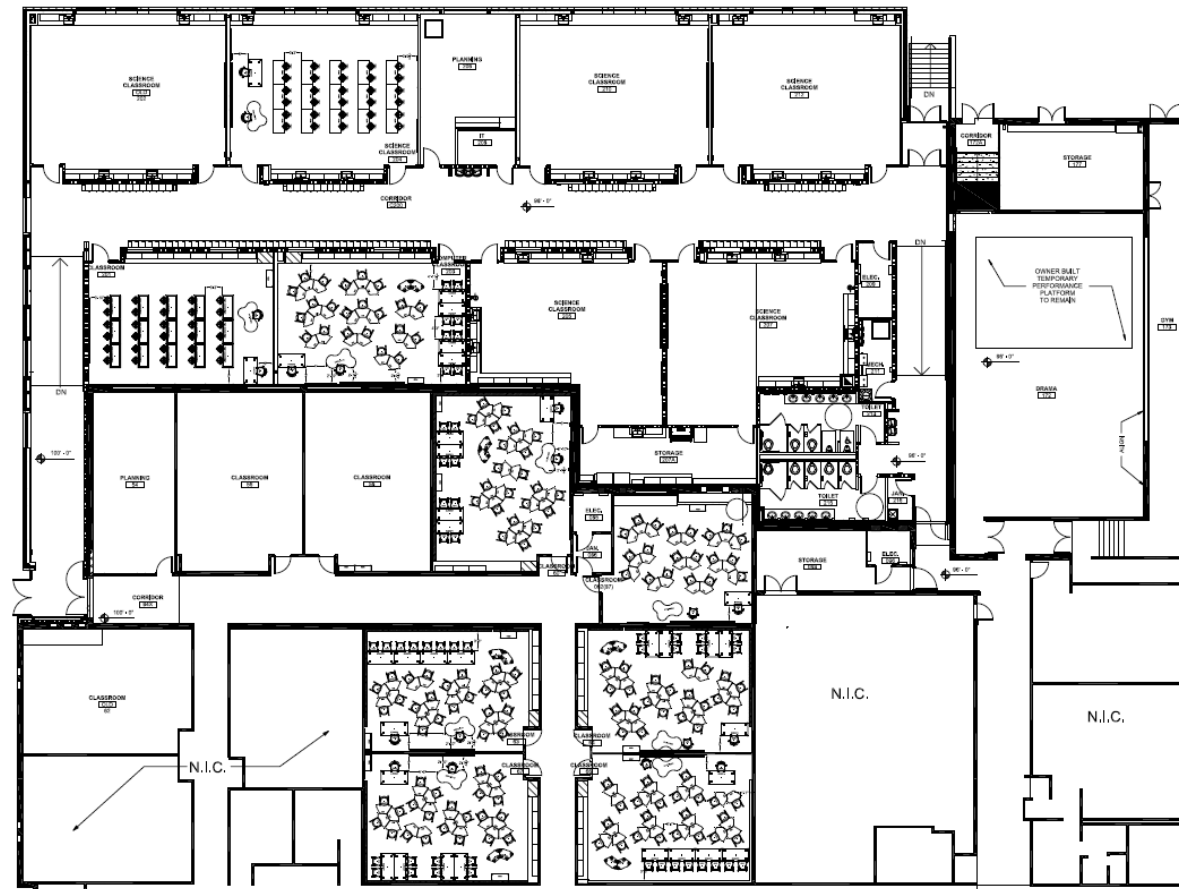
HCM – Phipps

August
Delivery



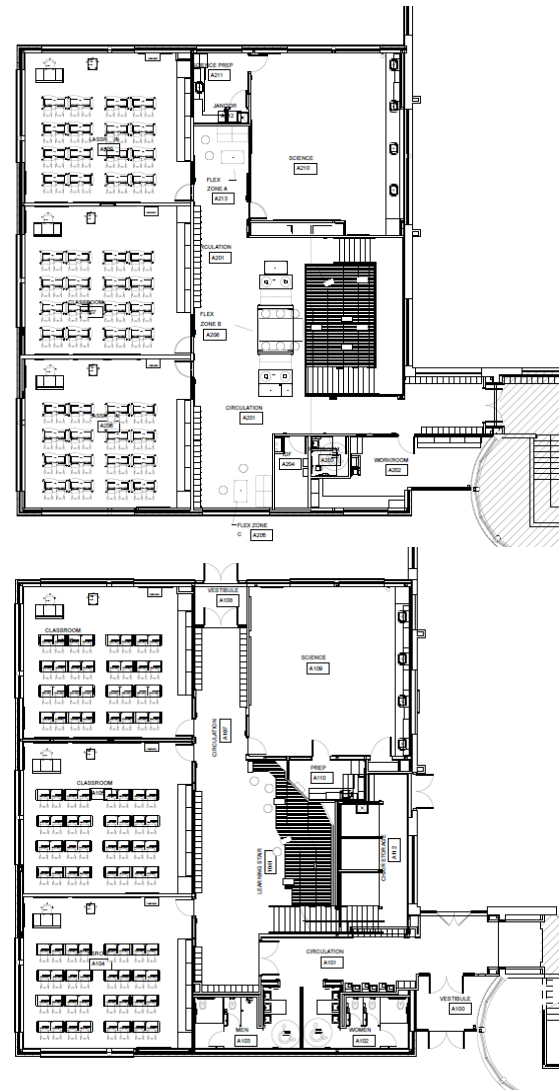
Creighton MS – Furniture
Meteor

August
Delivery



Ken Caryl MS – Furniture
OfficeScapes – Pepco – Virco

August
Delivery



Summit Ridge MS – Furniture
OfficeScapes - Virco

Complete



West Jefferson MS – Furniture
Virco

Complete



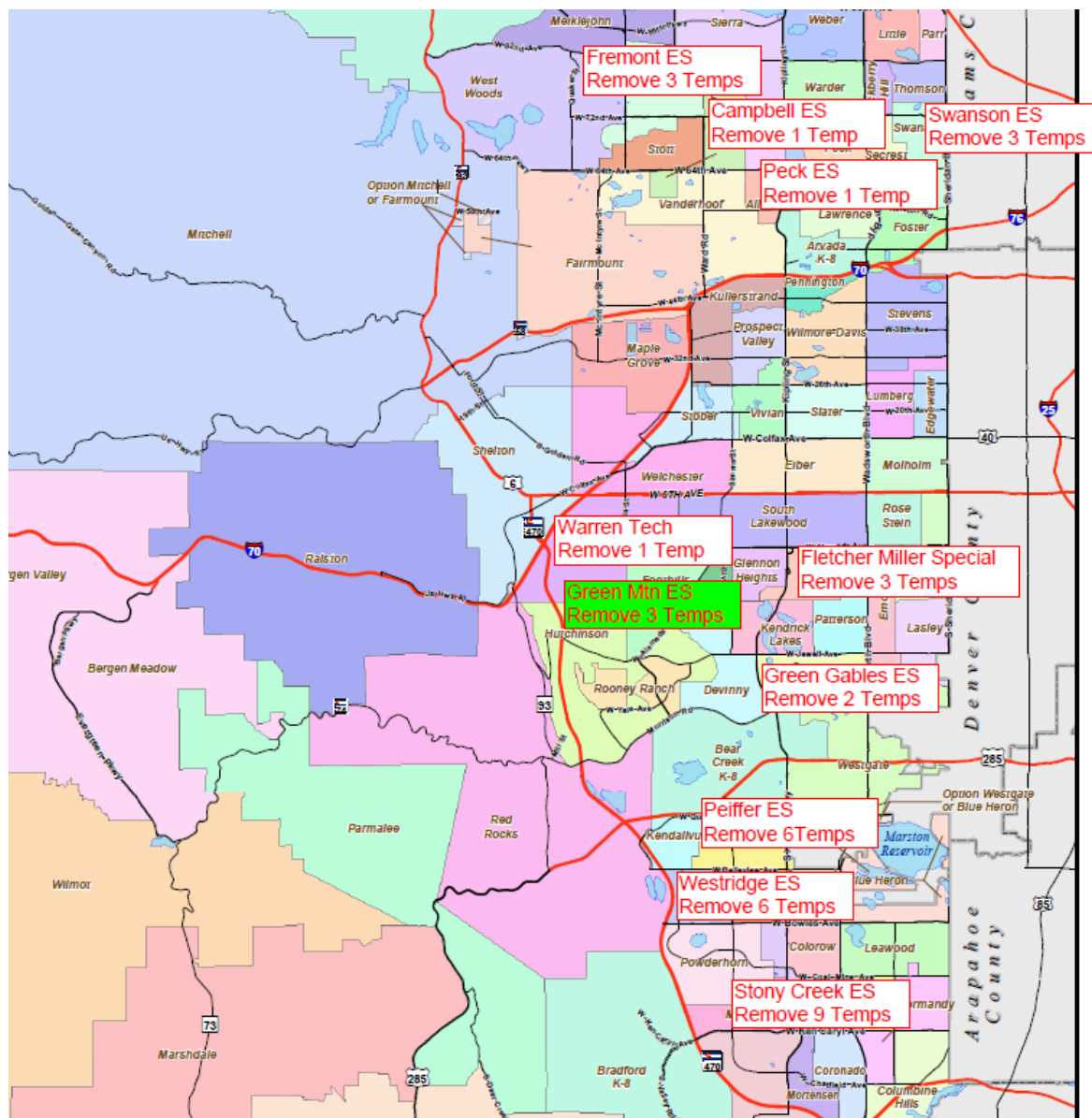
**Arvada K8 – Furniture
OfficeScapes**

Complete



Pomona HS – Furniture
Pepco - Virco

Campbell	ES	1 TMP	★
Green Gables	ES	2 TMP	
Green Mountain	ES	3 TMP	★
Fremont	ES	3 TMP	★
Peiffer	ES	6 TMP	
Stony Creek	ES	9 TMP	★
Swanson	ES	3 TMP	★
Westridge	ES	6 TMP	★
Peck	ES	1 TMP	
Fletcher Miller Special	OPT	1 TMP	
Warren Tech Central	OPT	1 TMP	★



Temp Removal – 36 temps – 11 Locations
25 Completed

School	Camera Count	School	Camera Count
Columbine HS Bond	19	Swanson ES Bond	7
Dutch Creek ES Bond	7	Hackberry Hill ES Bond	7
Leawood ES Bond	7	Thomson ES Bond	7
Normandy ES Bond	7	Lumberg ES Bond	5
Warder ES Bond	2	Edgewater ES Bond	4
Parr ES Bond	7	Molholm ES Bond	7
Bergen Meadow ES Bond	6	Red Rocks ES Bond	3
Little ES Bond	7	Kendallvue ES Bond	7
Governor Ranch ES Bond	7	Peiffer ES Bond	5
Parmalee ES Bond	2	Lasley ES Bond	2
Bergen Valley ES Bond	7	Patterson ES Bond	7
Wilmot ES Bond	3	Green Gables ES Bond	7
Lawrence ES Bond	7	Kullerstrand ES Bond	6
Foster ES Bond	7	Rose Stein ES Bond	5
Peck ES Bond	7	Deane ES Bond	1
Free Horizon Montessori	15	Stober ES Bond	7
Columbine Hills ES Bond	7	Vivian ES Bond	7
Westgate ES Bond	7	Pennington ES Bond	7
Fitzmorris ES Bond	7	Totals	239



Security Camera Installations - Elementary Schools
 Artic Areas – Columbine, Pomona, Evergreen, Arvada, Jefferson & Bear Creek
 37 schools walked for quotes on 239 cameras - HSS

Allendale ES

Dennison ES

Lawrence ES ★

Ryan ES

Sheridan Green ES

Stott ES

Vanderhoof ES

Westridge ES



Devinny ES

Security Glass Installation - Elementary School

8 Schools –glass deliveries have started

Fire Alarm

D'Evelyn OPT
Mandalay MS
Red Rocks ES



Security Upgrades - Fire Alarm
4 Schools



Security Hardware - District Wide - Classrooms

High Schools – 100% Complete MS - 85% Complete ES – 35% Complete

CHARTER	DEBT REPAYMENT	Construction
New American School	\$3,090,152	
Excel Academy		\$3,090,152
Lincoln Academy		\$3,090,152
Compass Montessori Golden	\$4,242,977	
Compass Montessori Wheat Ridge		\$1,937,327
Addenbrooke Classical Academy		\$3,090,152
Montessori Peaks Academy		\$3,090,152
Rocky Mountain Deaf School		\$3,090,152
Mountain Phoenix Community School		\$3,090,152
Collegiate Academy		\$3,090,152
Rocky Mountain Academy of Evergreen	\$3,090,152	
Doral Academy		\$3,090,152
Great Work Montessori		\$3,090,152
Two Roads Charter School	\$3,090,152	
Woodrow Wilson Academy	\$3,090,152	
Jefferson Academy ES		\$0
Jefferson Academy Secondary		\$6,180,304



Jefferson Academy

Charter Schools – Cooperative Strategies

2018 BOND PROGRAM COMMUNICATIONS UPDATE

CAPITAL ASSET ADVISORY COMMITTEE

JULY 2019

CURRENT WORK:

- Sharing progress of construction via social media (post below):
 - We are tagging all of our photos and social media shares with #jeffcobuilds
 - Scheduling weekly construction updates throughout the summer
- Bond and Mill Fall 2019 Update:
 - We are going to distribute at the leadership meeting next week and distribute to the community (print and digital) in early August
- Website redesign:
 - New site is live: jeffcopublicschools.org/jeffcobuilds
 - Phase II work includes building out each individual articulation area page
- Special addition bond and mill levy ChalkTalk - 7/11/19
 - Featuring new bond website
- Media:
 - [Arvada Press - Safety and Security story](#)
 - Canyon Courier - Conifer Track story - Published
 - [Arvada H.S. STEM story](#) - written by Maureen, published on Jeffco homepage
 - Arvada Press - Story on Arvada Track (in progress)
- Planning ribbon cuttings and groundbreakings for the fall
- Exterior signs in design and once finalized we will begin production and placement

