



Last Month



Creighton MS – 8 Classroom Addition
Larson Incitti - Roche Constructors



Last Month

Ken Caryl MS – 8 Classroom Addition
HCM – Phipps Construction



Last Month

Summit Ridge MS – 8 Classroom Addition
Hollis & Miller – Roche Constructors



**Evergreen HS Storm Water– Piping Replacement
Anderson & Hastings - C&L Water Solutions**

Complete



Bradford K-8 – Gym Flooring
DLH – Gary Leimer

Complete



Bradford North – Gym Flooring
DLH – Gary Leimer

Complete



Free Horizons – Gym Flooring
DLH – Gary Leimer

Complete

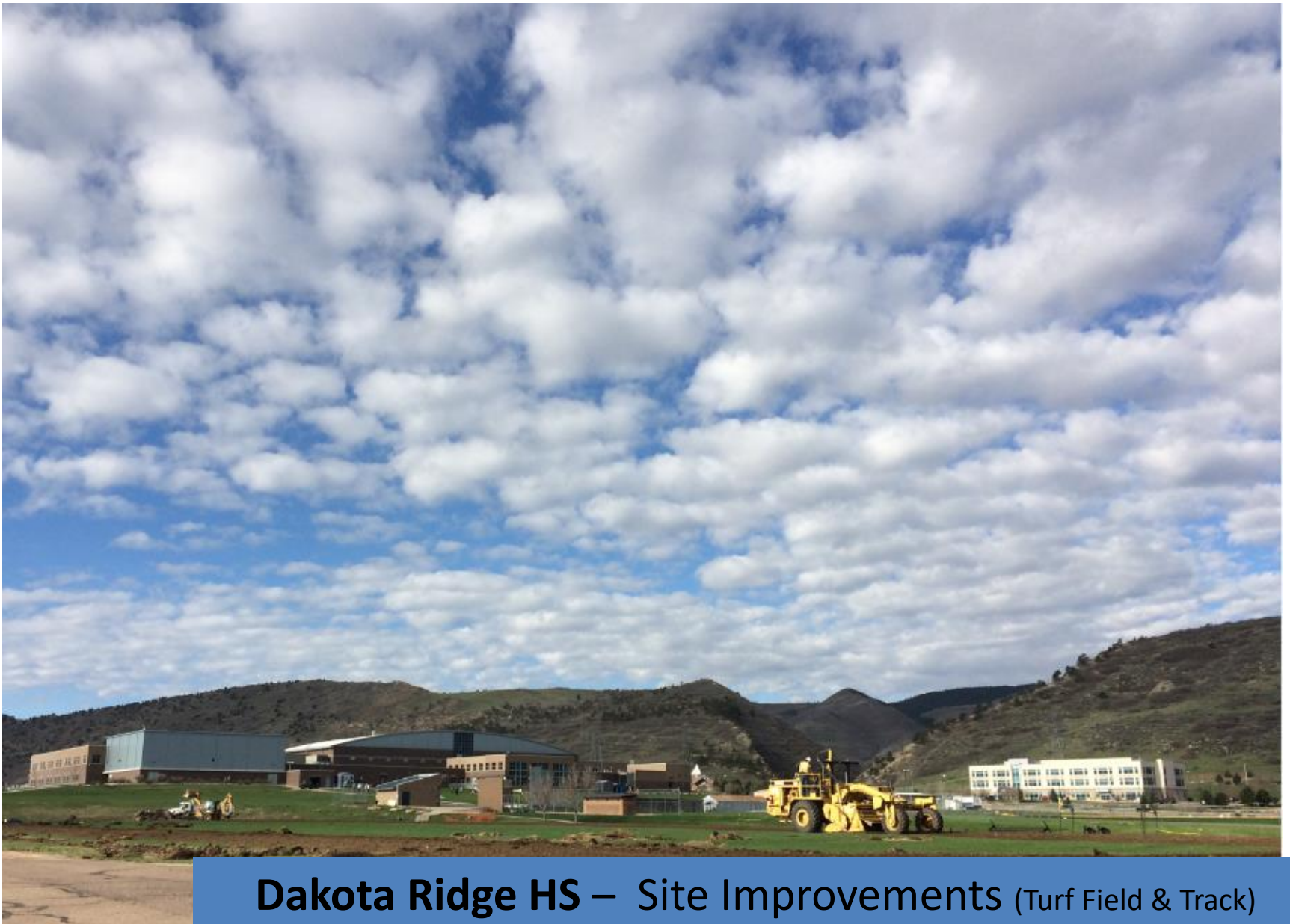


Before

Wilmore Davis ES – Gym Flooring
DLH – Sport Tech Flooring



Chatfield HS – Site Improvements (Turf Field & Track)
HCM – ECI



Dakota Ridge HS – Site Improvements (Turf Field & Track)
HCM – ECI



Lakewood HS – Site Improvements (Turf Field & Track)
HCM – ECI



Ralston Valley HS – Site Improvements (Turf Field & Track)
HCM – ECI



Arvada HS – Site Improvements (Turf Field & Track)
HCM – ECI





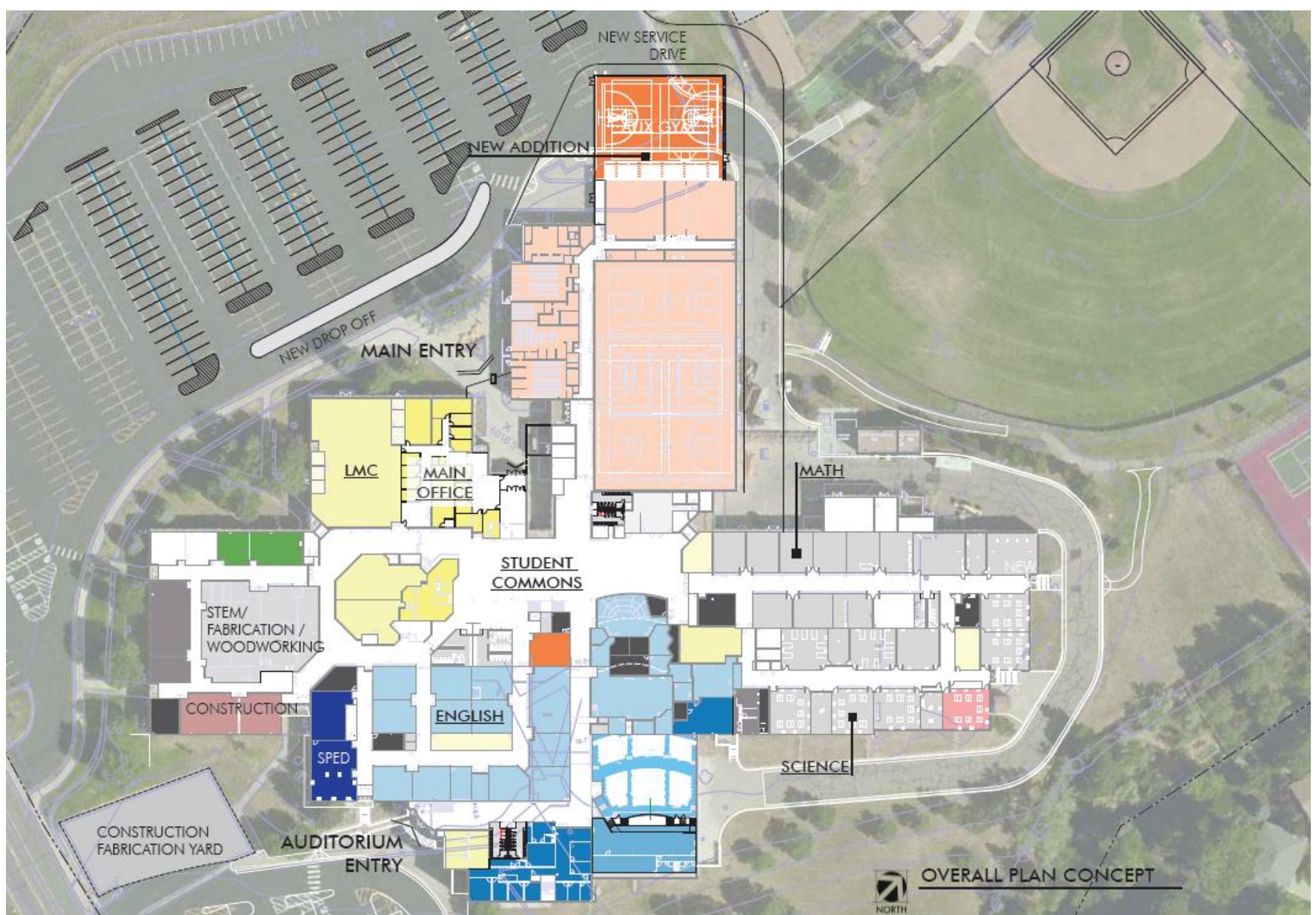
Columbine HS – Addition
Eidos – Swinerton



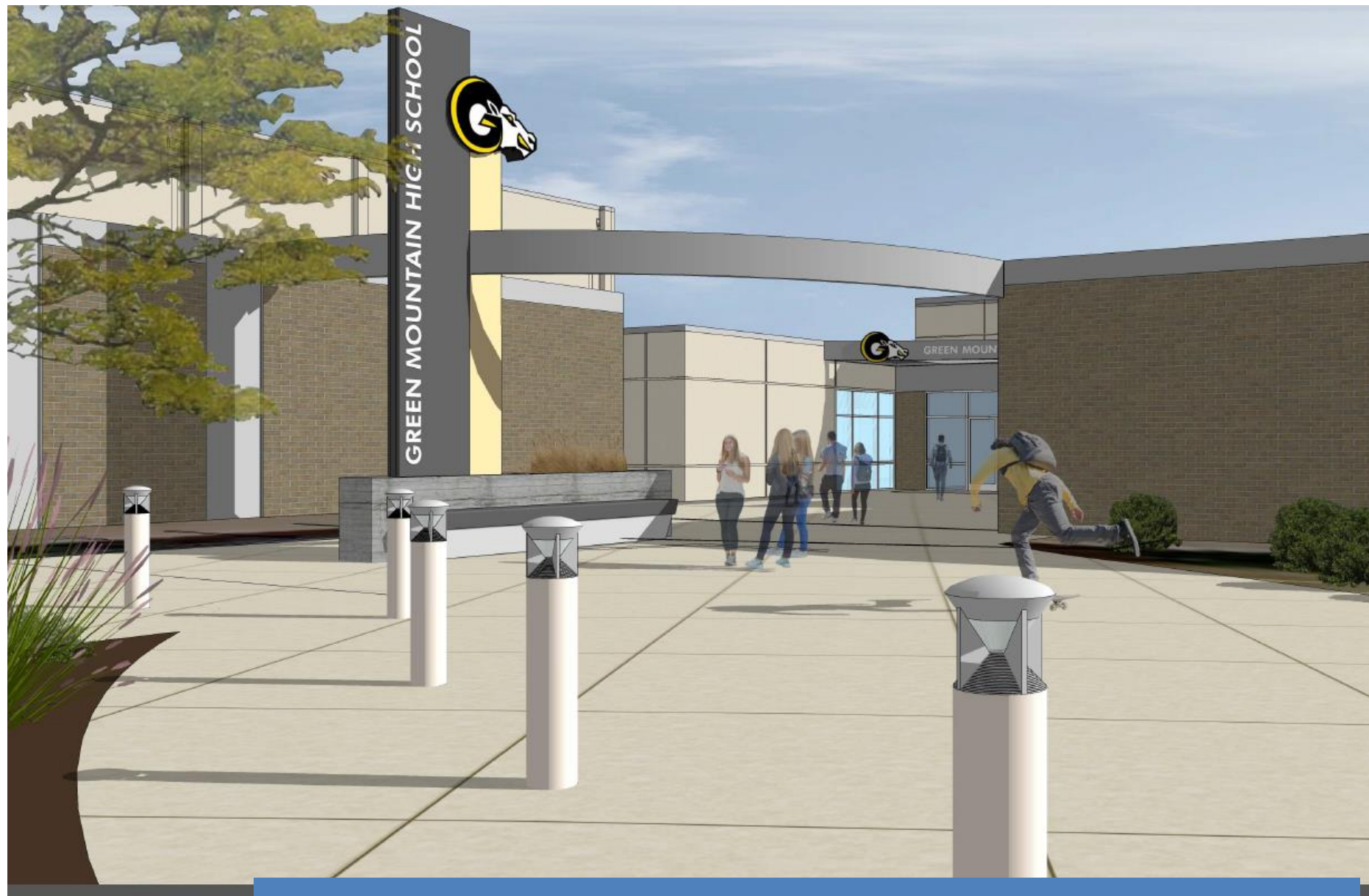
Columbine HS – Addition
Eidos – Swinerton



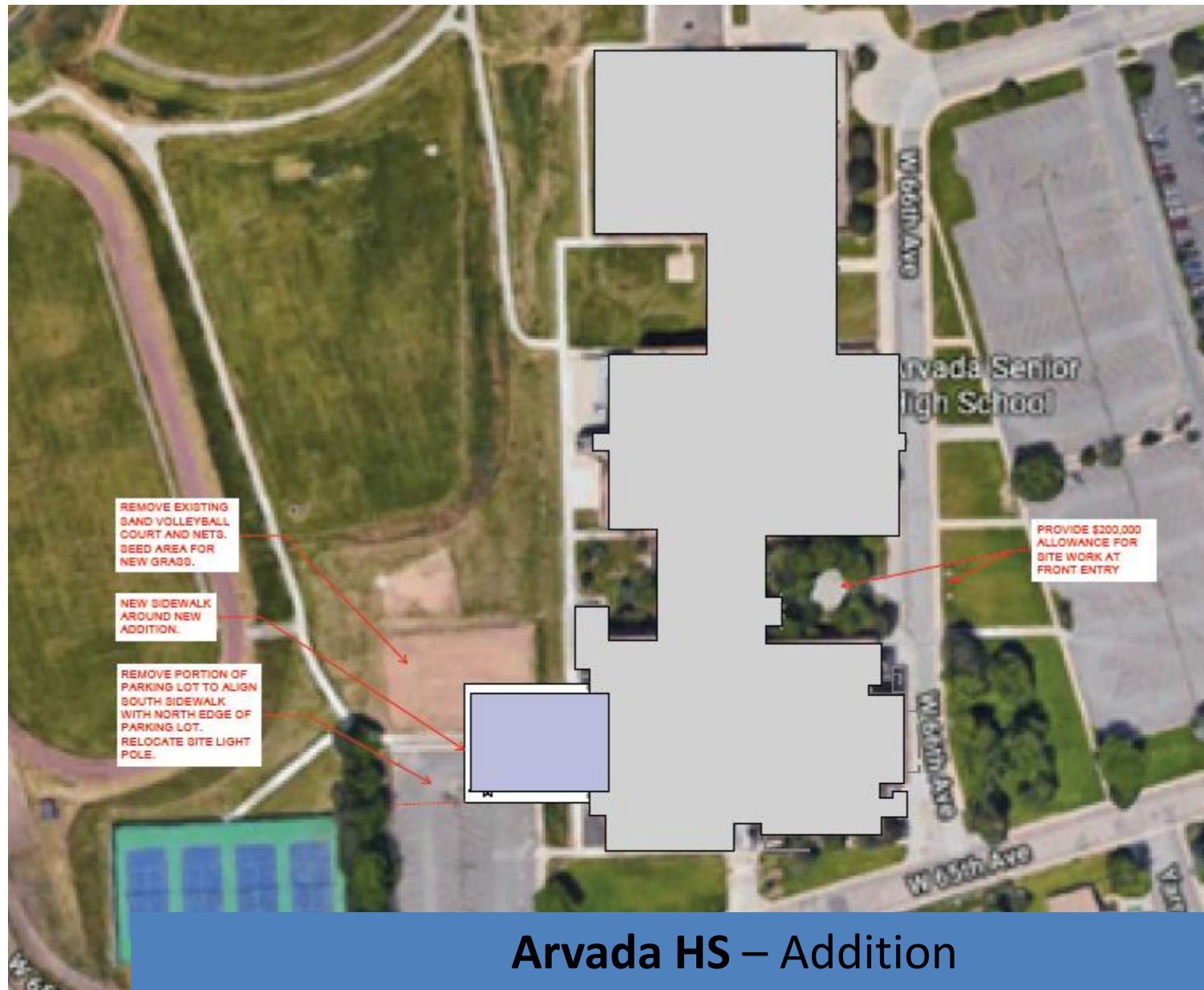
Columbine HS – Addition
Eidos – Swinerton



Green Mountain HS – Addition
MOA – GE Johnson

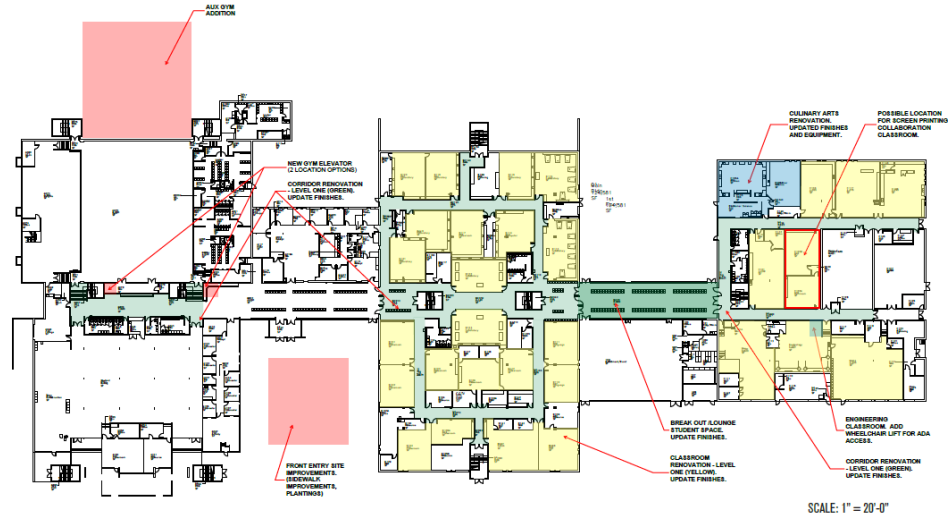


Green Mountain HS – Addition
MOA – GE Johnson

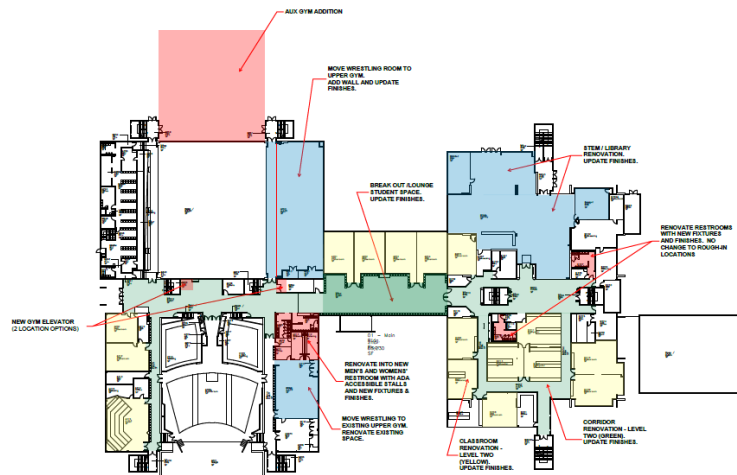


Arvada HS – Addition HCM – Saunders

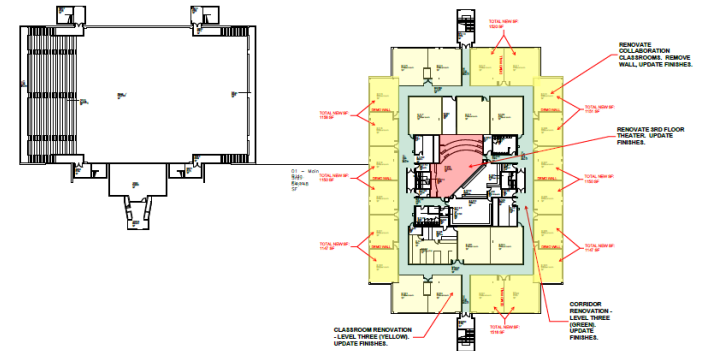
FLOOR PLAN - LEVEL 01



FLOOR PLAN - LEVEL 02

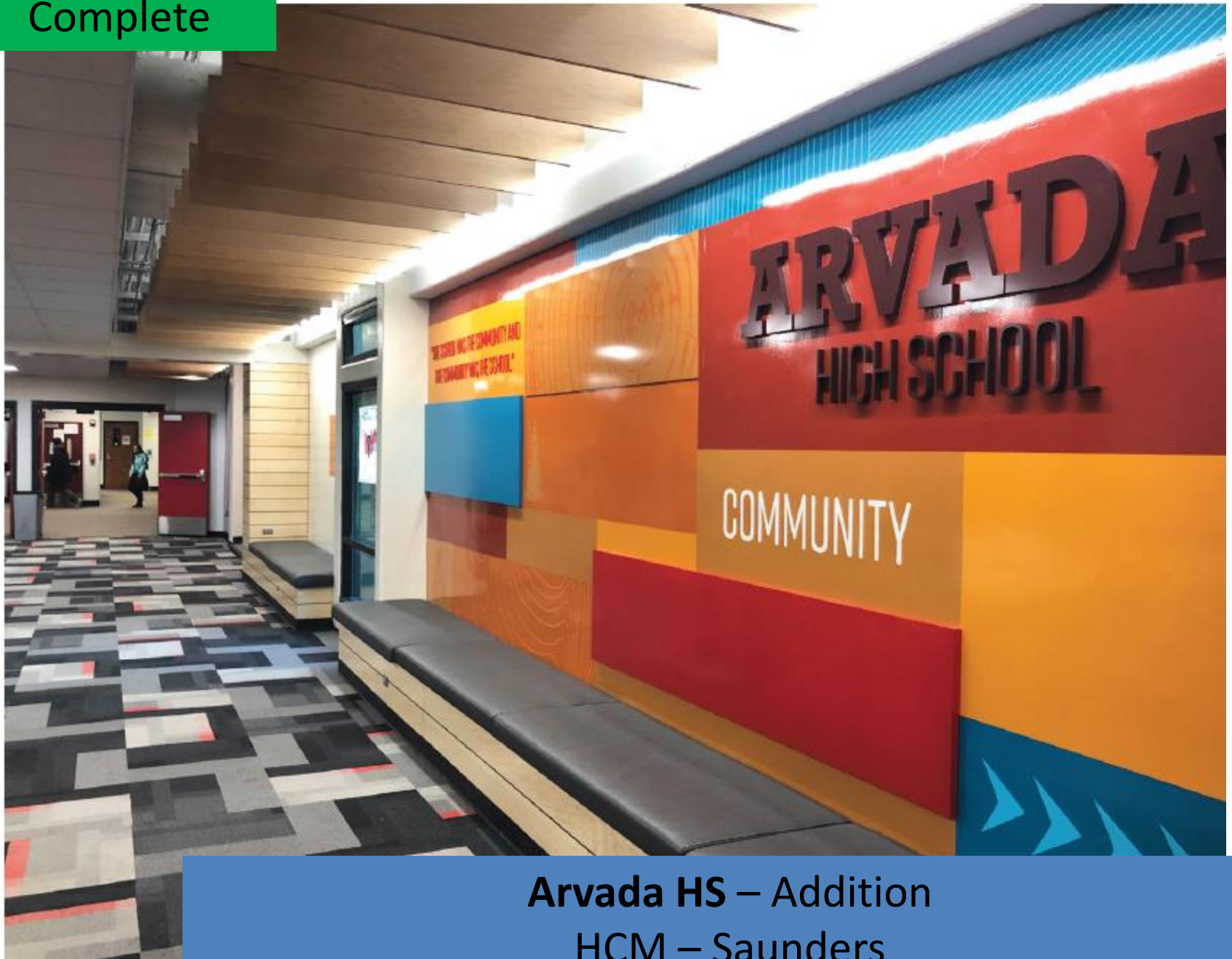


FLOOR PLAN - LEVEL 03



Arvada HS – Addition
HCM – Saunders

Complete



**Arvada HS – Addition
HCM – Saunders**



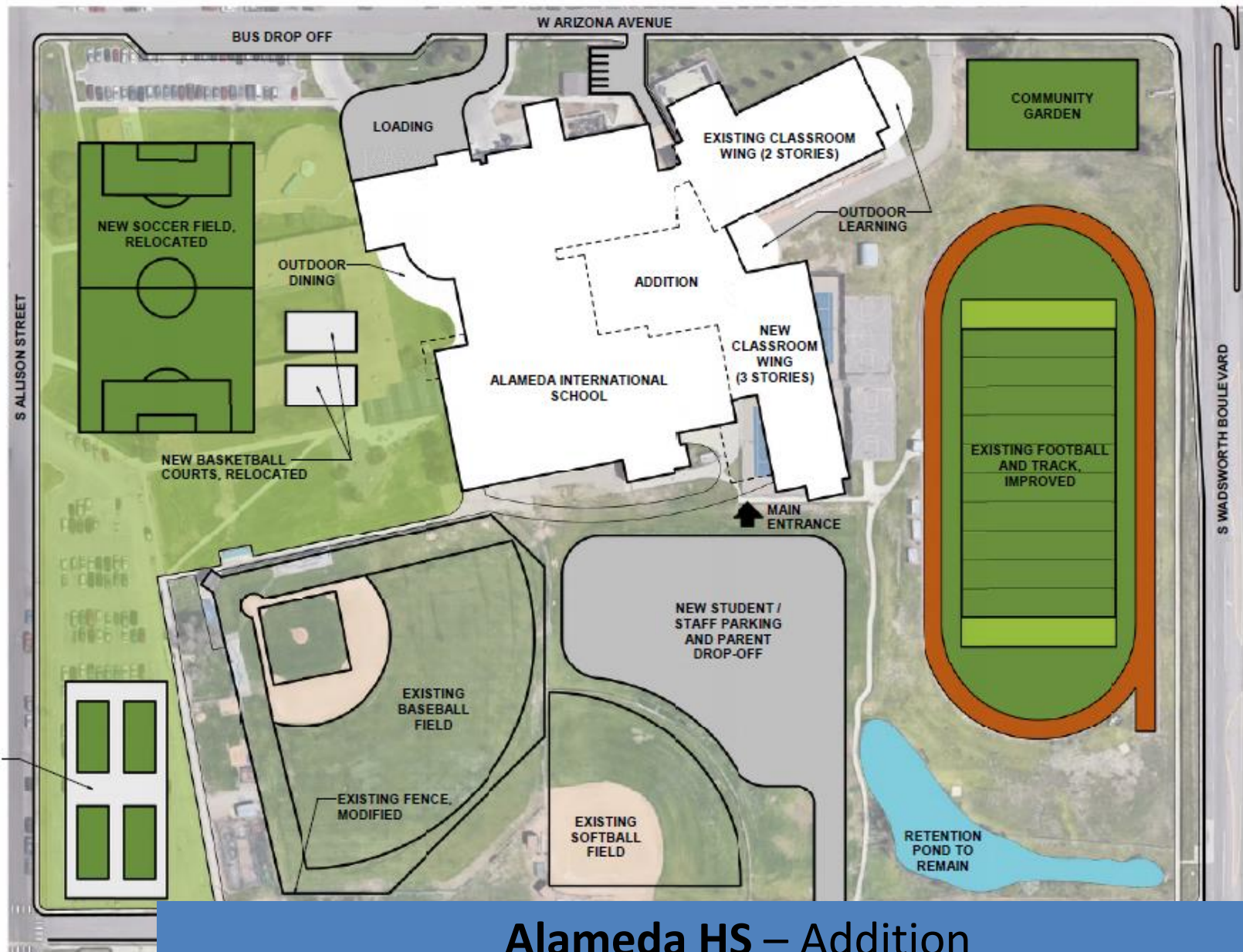
LEVEL 01 BREAK OUT AREA DESIGN

Arvada HS – Addition
HCM – Saunders

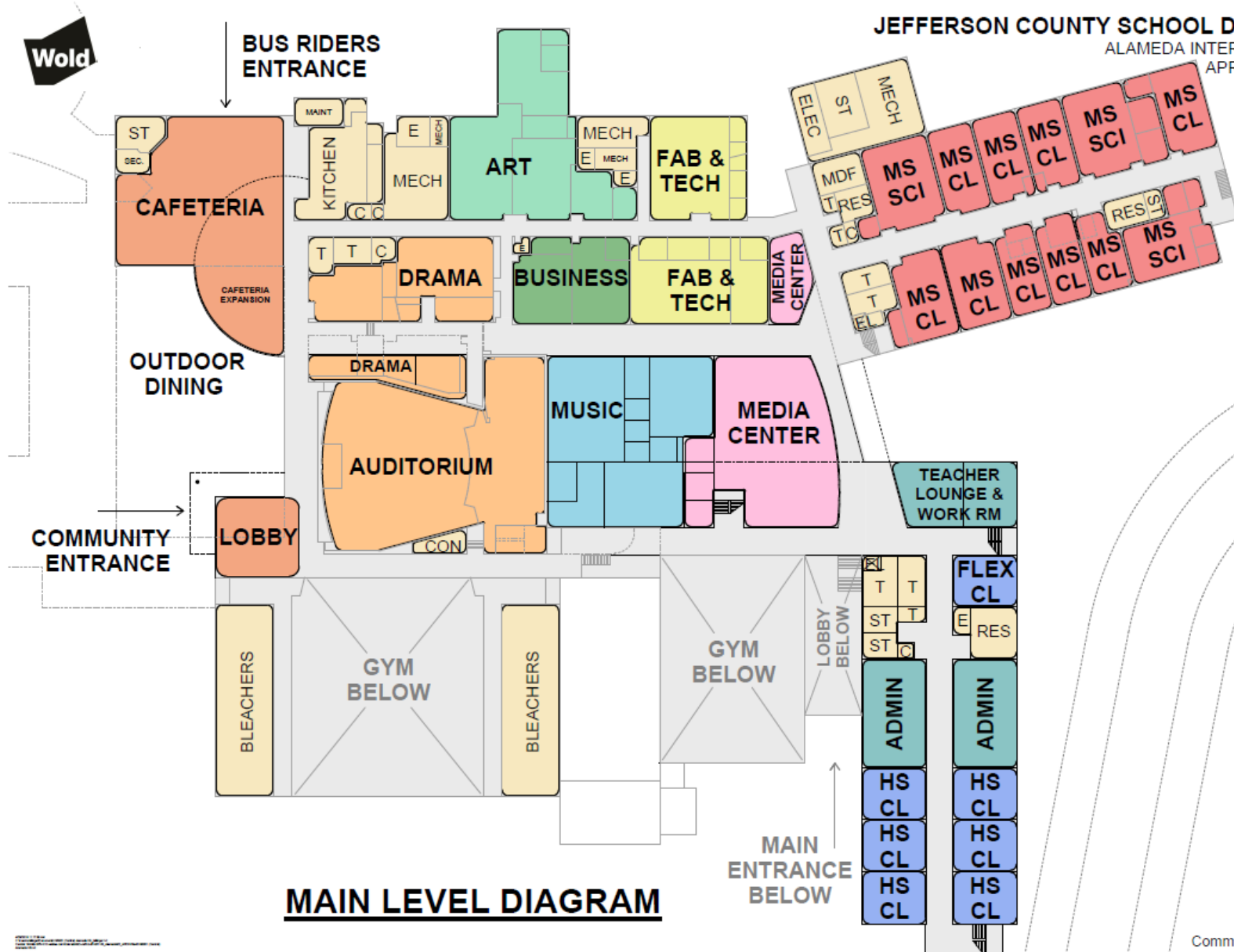


LEVEL 02 BREAK OUT AREA DESIGN

Arvada HS – Addition
HCM – Saunders



Alameda HS – Addition
Wold – Phipps

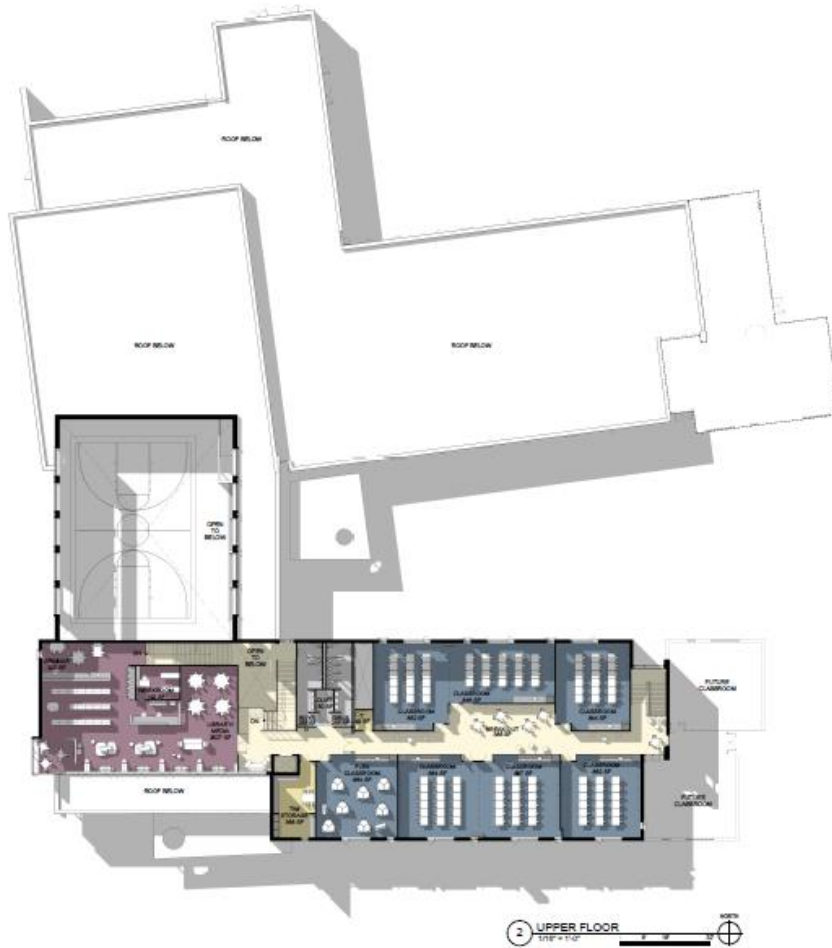


Comm No: 195001

Alameda HS – Addition Wold – Phipps



Kendrick Lakes ES – Replacement
Larson Incitti – TBD



Kendrick Lakes ES – Replacement Larson Incitti – TBD



SOUTHWEST CORNER



WEST FACADE



COURTYARD

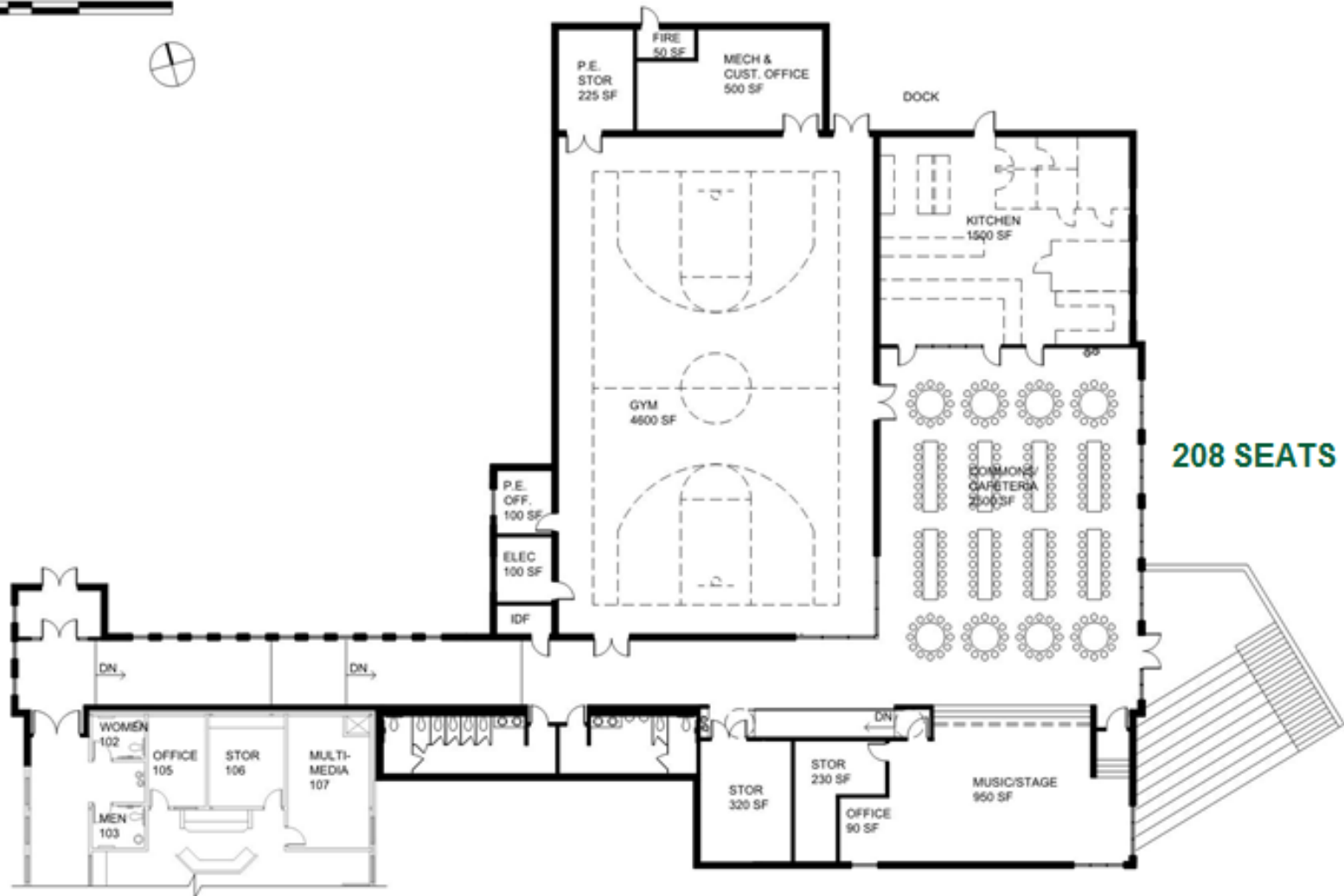
Kendrick Lakes ES – Replacement
Larson Incitti – TBD



Kendrick Lakes ES – Replacement
Larson Incitti – TBD



0 8' 16' 32'



208 SEATS

Wilmot ES – Addition
DLR – TBD

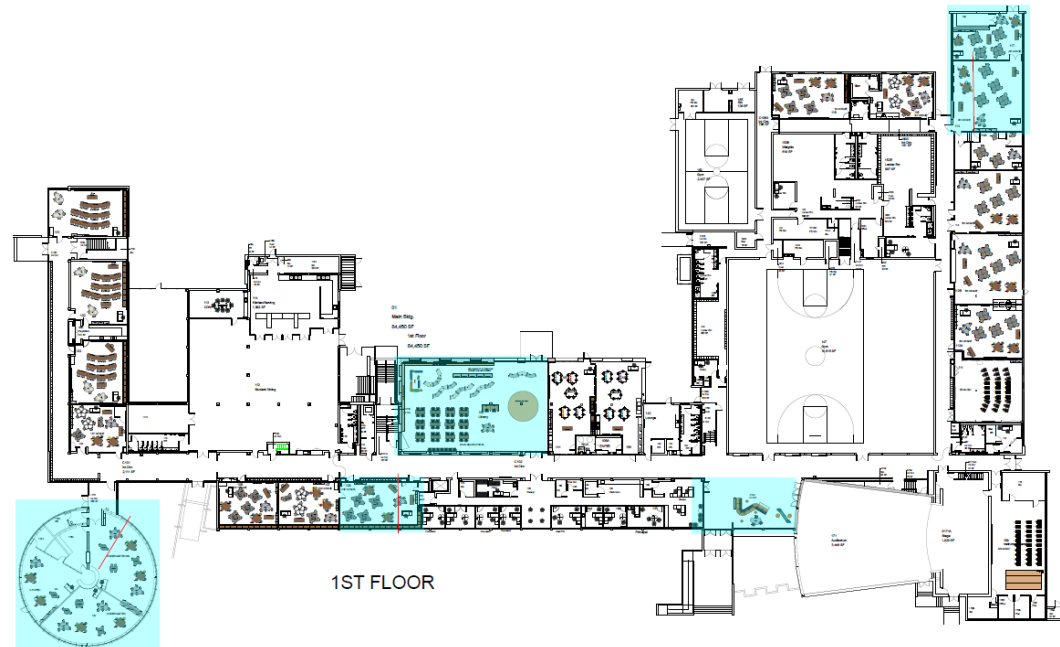
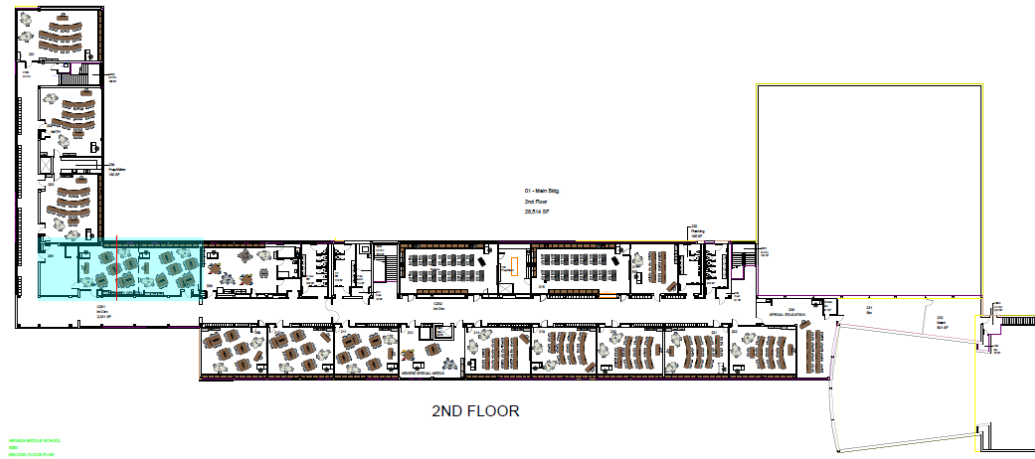


Wilmot ES – Addition
DLR – TBD



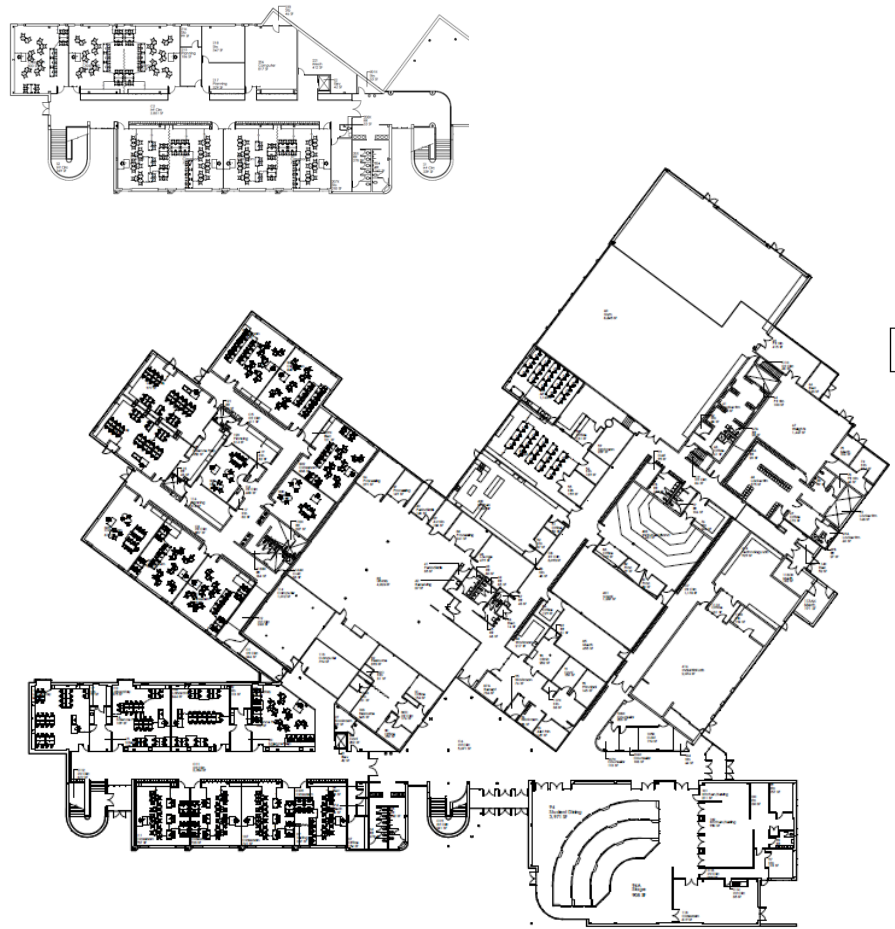
Wilmot ES – Addition
DLR – TBD

Summer Delivery



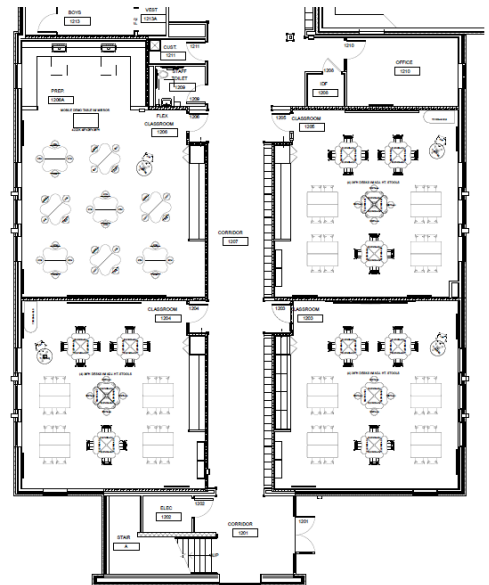
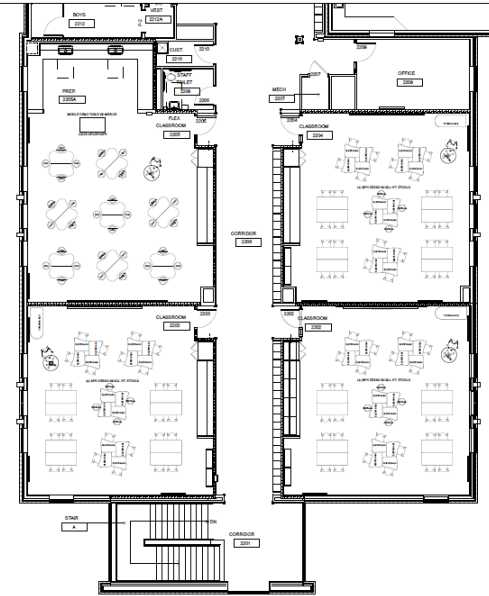
**Arvada K8 – Furniture
OfficeScapes**

Summer Delivery



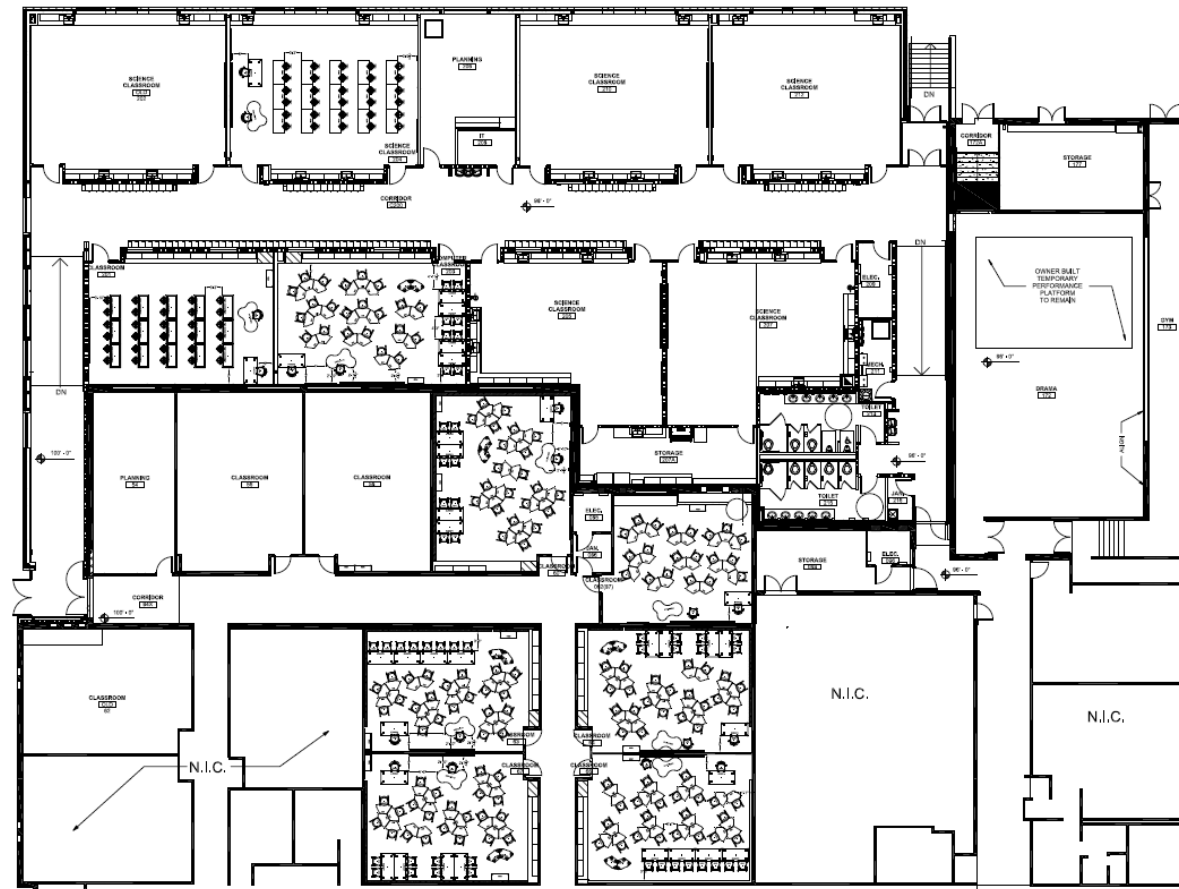
**West Jefferson MS – Furniture
Virco**

Summer Delivery



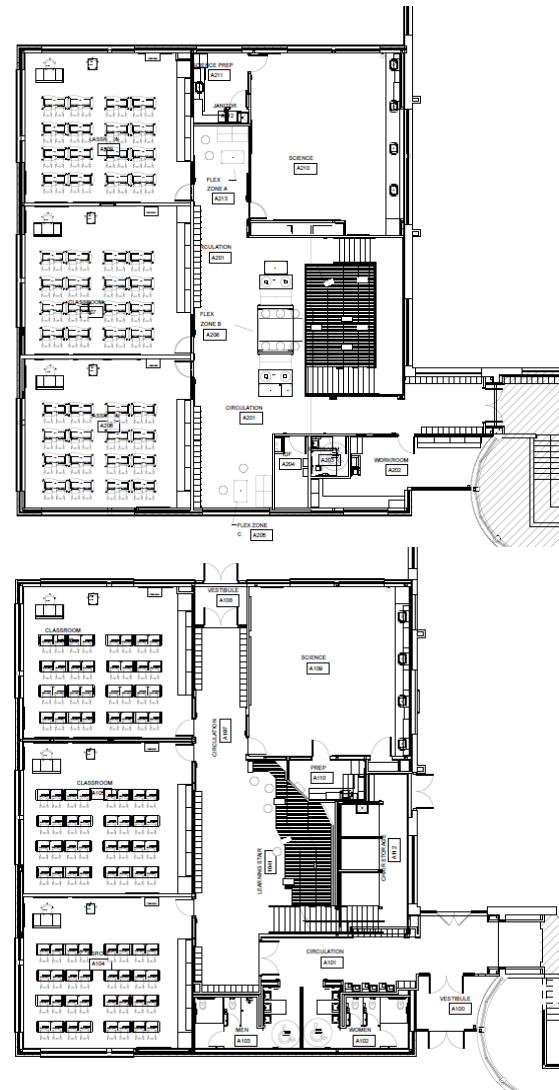
**Creighton MS – Furniture
Meteor**

Summer Delivery



Ken Caryl MS – Furniture
OfficeScapes – Pepco – Virco

Summer Delivery



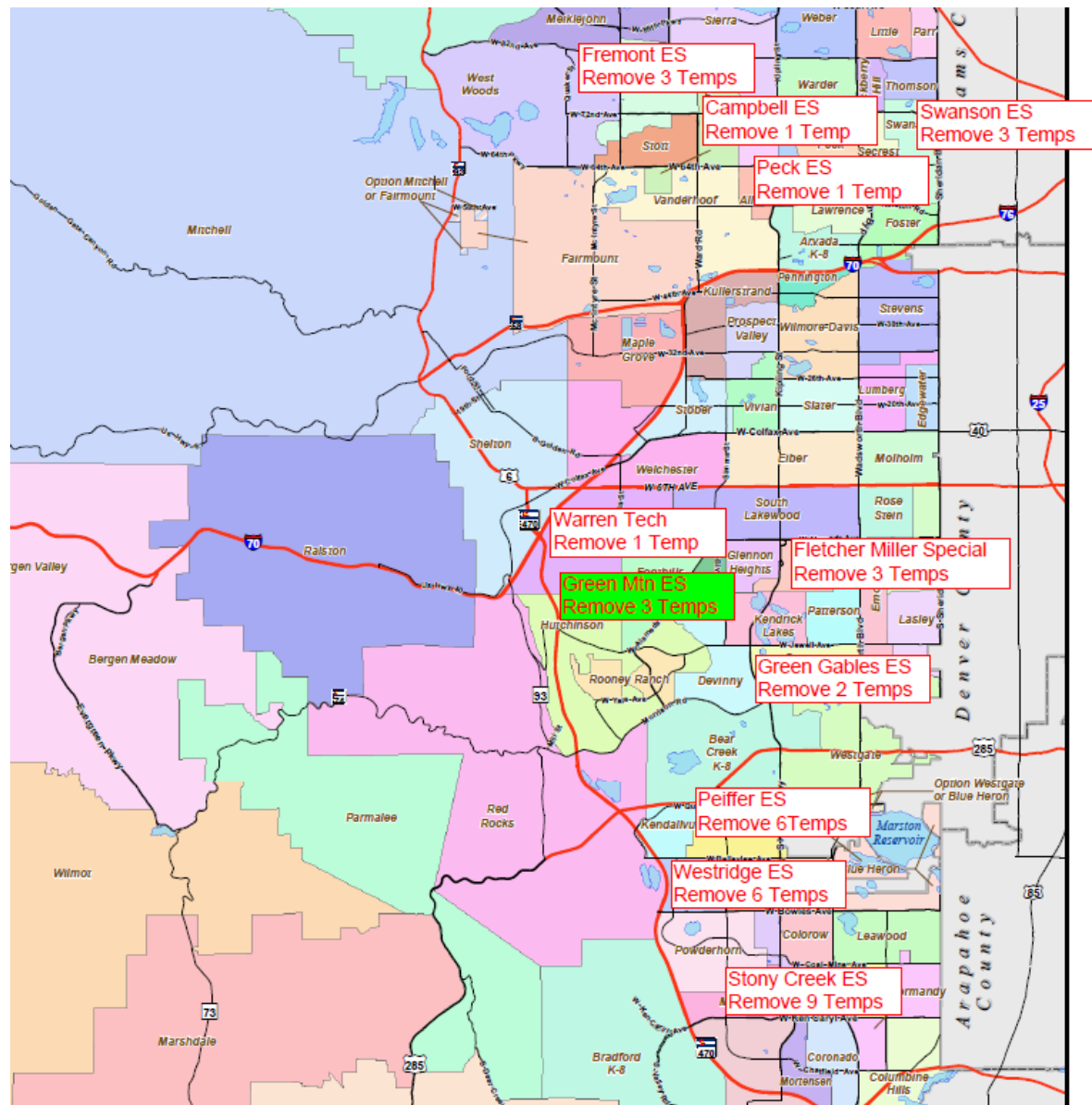
**Summit Ridge MS – Furniture
OfficeScapes - Virco**

Complete



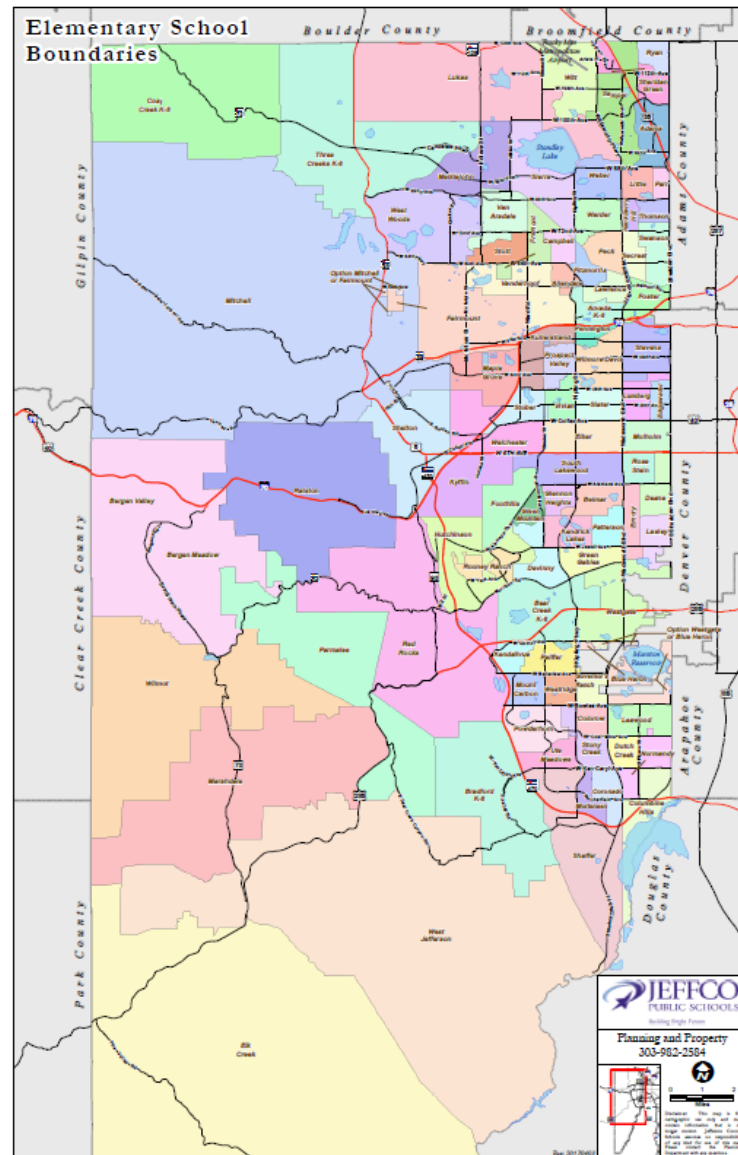
Pomona HS – Furniture
Pepco - Virco

Campbell	ES	1 TMP
Green Gables	ES	2 TMP
Green Mountain	ES	3 TMP
Fremont	ES	3 TMP
Peiffer	ES	6 TMP
Stony Creek	ES	9 TMP
Swanson	ES	3 TMP
Westridge	ES	6 TMP
Peck	ES	1 TMP
Fletcher Miller Special	OPT	1 TMP
Warren Tech Central	OPT	1 TMP



Temp Removal – 36 temps – 11 Locations

Schools	Cameras
Bergen Meadow	6
Bergen Valley	7
Parmalee	2
Wilmot	6
Little	7
Parr	7
Warder	2
Weber	
Fitzmorris	7
Foster	7
Hackberry	7
Lawrence	7
Peck	7
Secrest	7
Swanson	7
Thomson	7
Edgewater	4
Lumberg	5
Molholm	7
Green Gables	7
Kendallvue	7
Kendrick Lake	3
Peiffer	7
Red Rocks	4
Westgate	7
Columb Hills	7
Dutch Creek	7
Gov Ranch	7
Leawood	7
Normandy	7



Elementary School Security Camera Installations

Artic Areas – Columbine, Pomona, Evergreen, Arvada, Jefferson & Bear Creek

HSS

CHARTER	DEBT REPAYMENT	Construction
New American School	\$3,090,152	
Excel Academy	\$3,090,152	
Lincoln Academy	\$3,090,152	
Compass Montessori	\$1,937,327.37	\$1,152,824.57
Addenbrooke Classical Academy	\$3,090,152	
Montessori Peaks Academy	\$3,090,152	
Rocky Mountain Deaf School	\$3,090,152	
Mountain Phoenix Community School	\$3,090,152	
Collegiate Academy		\$3,090,152
Compass Montessori		\$3,090,152
Rocky Mountain Academy of Evergreen		\$3,090,152
Doral Academy		\$3,090,152
Great Work Montessori		\$3,090,152
Two Roads Charter School		\$3,090,152
Woodrow Wilson Academy		\$3,090,152
Jefferson Academy ES		\$3,090,152
Jefferson Academy Secondary		\$3,090,152



Jefferson Academy

Charter Schools – Cooperative Strategies

2018 BOND PROGRAM COMMUNICATIONS UPDATE

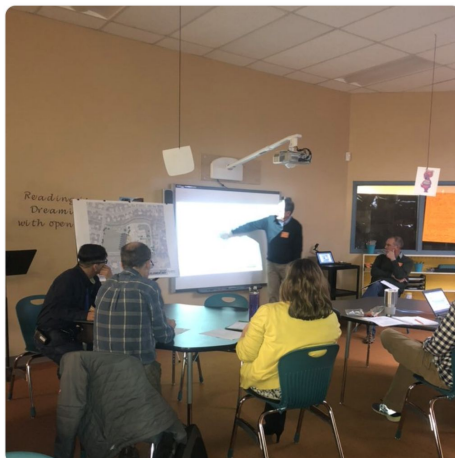
CAPITAL ASSET ADVISORY COMMITTEE


MAY 2019

CURRENT WORK:

- Sharing progress of DAGs via social media (posts below):
 - We are tagging all of our photos and social media shares with #jeffcobuilds
- Community Update:
 - Content is complete and we are working with designers to layout the report
 - We will share the digital copy with you when it is complete and can provide printed copies if needed
- Website redesign is in progress:
 - Currently updating layout and content
- Media:
 - Lakewood Sentinel story on the Lakewood H.S. track project - Published
 - Lakewood Sentinel story on Kendrick Lakes DAG - tentative publish date of Mid-May
 - Denver Post story on bond progress - working with DP report currently on the piece
- Covering Arvada H.S. STEM classes that are working with their architects to learn more about the field and tools they use in their work - May 8
 - Covering on social and taking video
 - Story pitched to the media
- Starting design process for our school project signs

 **Jeffco Public Schools** @JeffcoSchoolsCo · 22h
The Kendrick Lakes Design Advisory Group is hard at work tonight making building design choices for their new school. This exciting school transformation is part of our voter-approved bond program! #jeffcobuilds



 **Jeffco Public Schools ~ Colorado** added 4 new photos. May 1

The artwork at **Kendrick Lakes Elementary** really brings the building to life and we look forward to seeing student work on display in their new building – funded through the 2018 bond measure. A group of teachers



Like Comment Share